

KEW Windows for KEW6315

Installation Manual



KEW6315

This manual contains instructions how to install the software "KEW Windows for KEW6315" supplied with KEW6315.

1. Introduction

● Interface

This instrument is equipped with USB and Bluetooth interfaces.

Communication method : USB Ver2.0
Bluetooth : Bluetooth Ver2.1+EDR (Class2)
Compliant profile: SPP

The followings can be done by USB/Bluetooth communication.

- * Downloading files in the internal memory of the instrument to a PC
- * Making settings for the instrument via a PC
- * Displaying the measured results on a PC in graphic form in real-time, and also saving the measured data at the same time

● System Requirements

- OS (Operation System)
For the supported OS, please check the version label on the CD case or visit our homepage.
- Display 1024 × 768 dots, 65536 colors or more
- HDD (Hard-disk space required)
1 Gbyte or more (including Framework)
- .NET Framework (3.5 or more)

● Trademark

- Windows® is a registered trademark of Microsoft in the United States.
- Bluetooth® is a registered trademark of Bluetooth SIG.

The latest software is available for download from our homepage.

<http://www.kew-ltd.co.jp>

KYORITSU ELECTRICAL INSTRUMENTS WORKS, LTD.

2. Installing "KEW Windows for KEW6315"

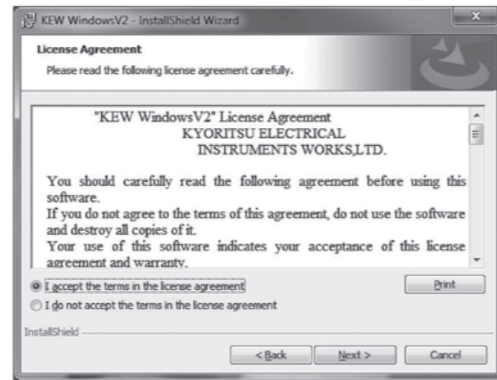
(For Windows 7 / Vista / XP)

- (1) The followings shall be checked before installing this software.
 - To prepare your system for installation, please close all open programs.
 - Be sure NOT to connect the instrument to the PC until installation completes.
 - Installation shall be done with Administrator right.

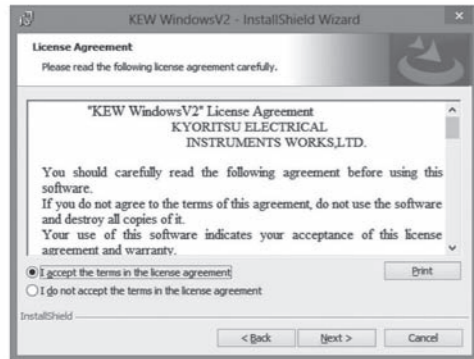
- (2) Insert the CD-ROM in your PC's CD-ROM Drive.
Click the "Run KEWSetupLauncher2.exe" when the "AutoPlay" pop-up window appears on Windows Vista or Windows 7.

If the installer does not run automatically, double-click the "KEWSetupLauncher2.exe" in the CD icon. If the User Account Control dialog box appears, click "Yes".

- (3) Read through and understand the License Agreement and click "I accept...", and then click "Next".



- (4) Read through and understand the License Agreement and click "I accept...", and then click "Next".



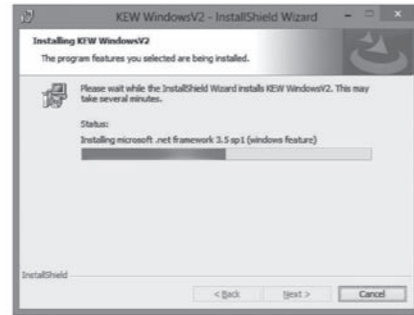
- (5) Click "Next" after entering the user information and other supplementary information, and click "Next". **Ensure that internet connection is established, otherwise the installation of this application may be incomplete.**

- (6) Confirm the information on installation, and then click "Install" to start installation.

- (7) Click "Finish" when "InstallShield Wizard Complete" dialog box appears.



The following box will appear if .NET Framework 3.5 is not installed in your PC.



If a message requiring restarting your PC is displayed, click "Yes" and restart your PC. Run "KEWSetupLauncher2.exe" from the CD after restarting the PC.

- (8) When the installation wizard completes, subsequent installation initiates automatically.



- (9) Repeat above step (4) through (7) and complete the installation.

*** How to un-install the PC Software:**
Access to the "Control Panel" and double click on the "Add/Remove Programs" to remove the "KEW WindowsV2" and "KEW Windows for KEW6315".

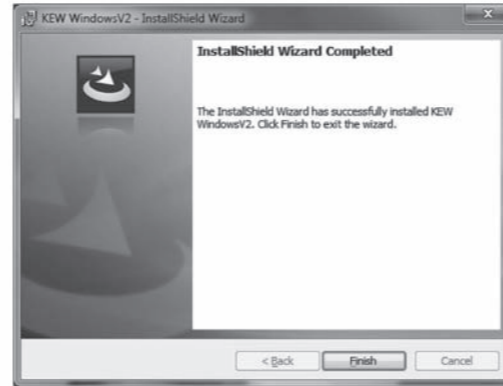
- (4) Click "Next" after entering the user information and other supplementary information.

- (5) Confirm the information on installation, and then click "Install" to start an installation.

If a message requiring restarting your computer is displayed, click "Yes" and restart your computer. Installation process will then restart.

Restarting your computer is essential to install the application properly.

- (6) Click "Finish" when "InstallShield Wizard Complete" dialog box appears.



- (7) When the installation wizard completes, subsequent installation initiates automatically.

If you rebooted your PC at step (5), double-click the CD drive at "My computer" to show the following window.



- (8) Repeat above step (3) through (6) and completes the installation.

How to un-install the PC Software:

Access to the "Control Panel" in the Start Menu at the lower left on the Windows screen, and double-click on the "Add/Remove Programs" to remove the "KEW WindowsV2" and "KEW Windows for KEW6315".

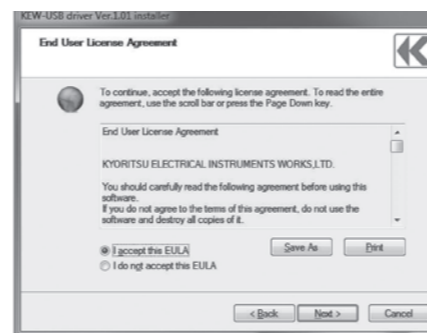
3. Installing USB driver

(Windows 7 / Vista)

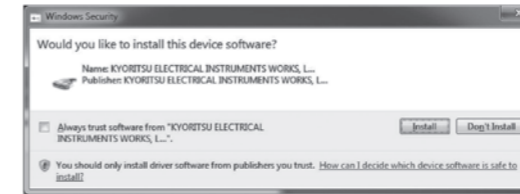
- (1) When KEW Windows for KEW6315 has been successfully installed in your computer, the following dialog box appears to start installing the USB driver. Click "Next".



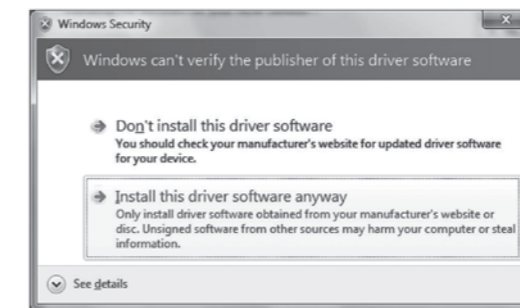
- (2) Read through and understand the End User License Agreement and click "I accept...", and then click "Next".



- (3) If the following Security Warning message appears, click "Install".



- * If the following Security Warning message appears, click on the "Install this driver anyway". (It is no problem to continue installing because operation has already been verified.)



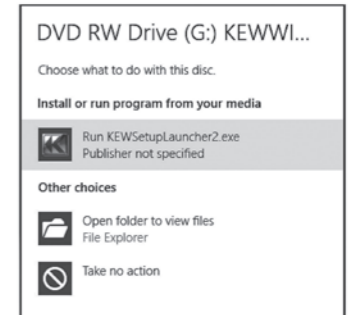
(For Windows 8 / 10)

- (1) The followings should be checked before installing this application.
 - To prepare your system for installation, please close all open programs.
 - Be sure NOT to connect the instrument to the PC until installation completes.
 - Installation shall be done with Administrator right.
 - To use KEW Windows for KEW6315, .NET Framework 3.5 is required. If .NET Framework 3.5 is not installed in your PC, it will be automatically installed when installing this application. Internet connection is required to install .NET Framework 3.5.

- (2) Insert the CD-ROM in your PC's CD-ROM drive.
Then the following pop-up will appear at the upper right on the screen.
Left-click on this box.

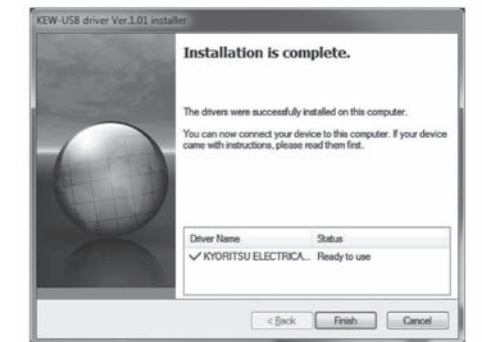
DVD RW Drive (D:) KEWWIN6315V100
Tap to choose what happens with this disc.

- (3) Click and select "Run KEWSetupLauncher2.exe" when the following box appears. If User Account Control dialog box appears, click "Yes".



If neither (2) nor (3) appears, run "KEWSetupLauncher2.exe" from the CD.

- (4) Installation completes when the following window appears. Click "Finish".



The USB driver has been successfully installed. Power on KEW6315 first, and then connect to you PC.

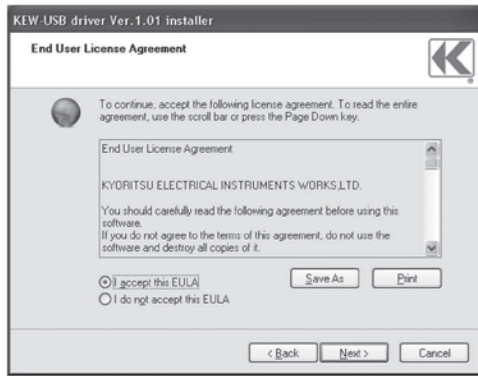
To restart the interrupted USB driver installation process, right click on the CD drive and click "Open". Click and start "kewusb101_setup.exe" in the "DRIVER" folder.

How to install the USB driver (for Windows XP)

(1) When KEW Windows for KEW6315 has been successfully installed in your computer, the following dialog box appears to start installing the USB driver. Click "Next".



(2) Read through and understand the End User License Agreement and click "I accept...", and then click "Next".



(3) If the following Security Warning message appears, click "Install".



* If the following Security Warning message appears, click on the "Install this driver anyway". (It is no problem to continue installing because operation has already been verified.)



(3) If the following Warning message appears, click "Continue Anyway". (It is no problem to continue installing because operation has already been verified.)

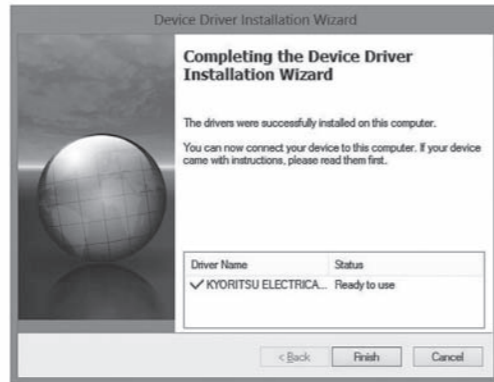


(4) Click "Finish" when an "Installation complete" window appears.

(5) The USB driver has been successfully installed. Power on KEW6315 first, and then connect to your PC. The "Found New Hardware Wizard" appears. Click "No, not this time." and then "Next".



(4) Installation completes when the following window appears. Click "Finish".



The USB driver has been successfully installed. Power on KEW6315 first, and then connect to you PC.

To restart the interrupted USB driver installation process, right click on the CD drive and click "Open". Click and start "kewusb101_setup.exe" in the "DRIVER" folder.

(6) On the following window, select "Install the software automatically. (Recommended)" and click "Next".



(7) If the following Warning message appears, click "Continue Anyway". (It is no problem to continue installing because operation has already been verified.)



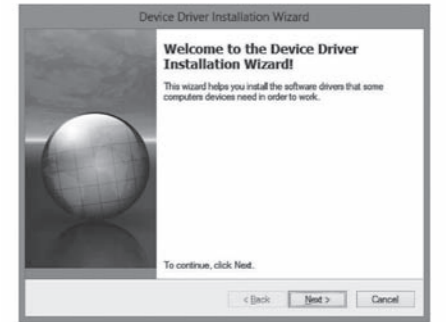
(8) When the installation completes, the Completing the Found New Hardware Wizard screen appears. Click "Finish".



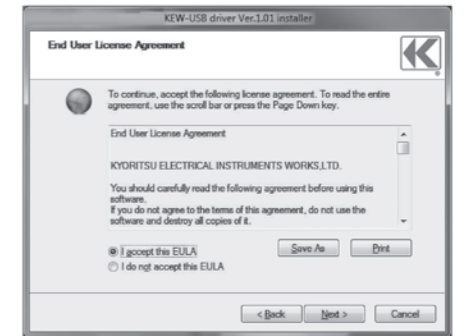
To restart the interrupted USB driver installation process, right click on the CD drive and click "Open". Click and start "kewusb101_setup.exe" in the "DRIVER" folder.

(For Windows 8 / 10)

(1) When KEW Windows for KEW6315 has been successfully installed in your computer, the following dialog box appears to start installing the USB driver. Click "Next".



(2) Read through and understand the End User License Agreement and click "I accept...", and then click "Next".



4. Starting "KEW Windows for KEW6315"

Click the "KEW WindowsV2" icon on your desktop, or click "Start" -> "Program" -> "KEW" -> "KEW WindowsV2". Ensure that KEW6315 gets started before connecting KEW6315 to your PC. Then start "KEW WindowsV2".

The main window for "KEW WindowsV2" appears. Select "KEW6315" and click "Start" or double click on the "KEW6315" to get the KEW6315 started. Click "Close" or close button (x) on the right-top to end the program.



For further instructions, please read the instruction manual. Click (Double click) the desktop shortcut to "KEW Windows for KEW6315 MANUAL".

MEMO

MEMO

KYORITSU ELECTRICAL INSTRUMENTS WORKS, LTD.
 2-5-20, Nakane, Meguro-ku,
 Tokyo, 152-0031 Japan
 Phone: +81-3-3723-0131
 Fax: +81-3-3723-0152
 Factory: Ehime, Japan
www.kew-ltd.co.jp