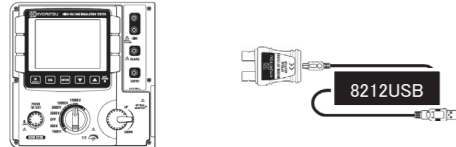


KEW Windows for KEW3128

Installation Manual



KEW 3128

This manual contains instructions how to install the special software "KEW Windows for KEW3128" supplied with MODEL8212USB.

1. Introduction

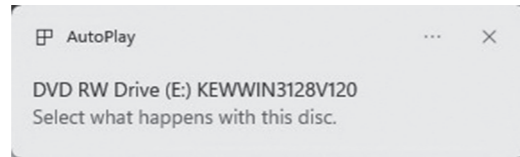
- **Interface**
This instrument is equipped with a USB interface. Communication method: USB Ver1.1
Following can be done by USB communication.
 - Downloading files in the internal memory of the instrument to a PC.
 - Making settings for the instrument via a PC
 - Displaying the measured results on a PC as graphs in real-time, and also saving the measured data at the same time.
- **System Requirements**
 - OS (Operation System)
For the supported OS, check the label on the CD case or visit our website.
 - Display
1024×768 dots, 65536 colors or more
 - HDD (Hard-disk space required)
100 Mbyte or more
 - .NET Framework (3.5 or more)
- **Trademark**
 - Windows® is a registered trademark of Microsoft in the United States.

The latest software is available for download from our homepage.
www.kew-ltd.co.jp

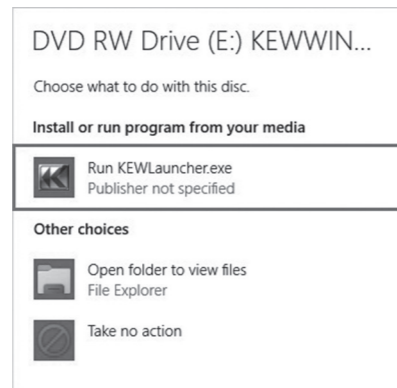


2. Installation of "KEW Windows for KEW3128"

- (1) Followings shall be checked before installing the software.
 - To prepare your system to install this software, please close all open programs.
 - Be sure NOT to connect the instrument with a USB until install is completed.
 - Installation shall be done with Administrative right.
- (2) Insert the CD-ROM in your PC's CD drive. Then following pop-up will appear at the upper right on the screen. Left-click on this box.

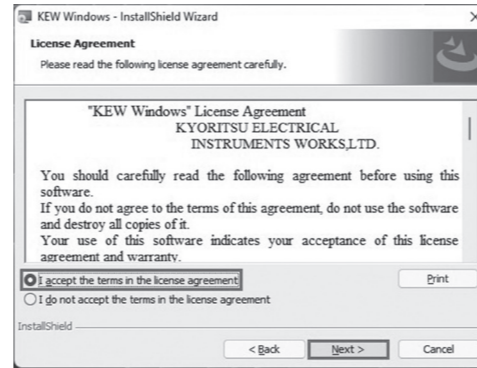


- (3) Click and select "Run KEWLauncher.exe" when the following box appears. If User Account Control dialog box appears, click "Yes".



If neither (2) nor (3) appears, click the CD icon and run "install.exe" file.

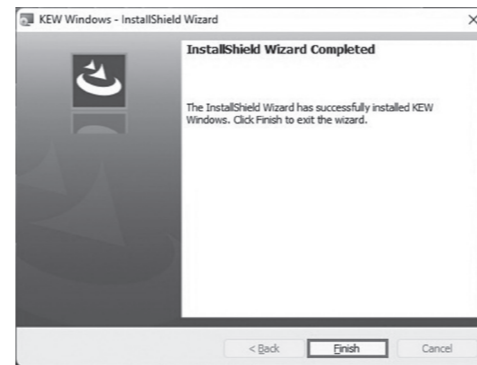
- (4) Read through and understand the License Agreement and click "I accept....", and then click **Next**.



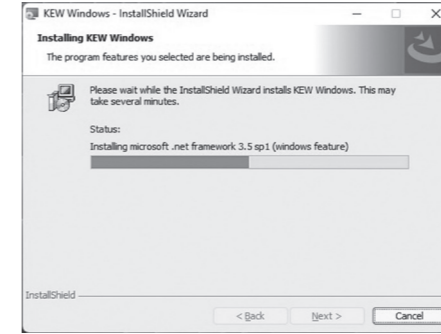
- (5) Click **Next** after entering the user information and other supplementary information and click **Next**.

- (6) Confirm the information on installation, and then click **Install** to start installation.

- (7) Click **Finish** when "InstallShield Wizard Complete" dialog box appears.



The following box will appear if .NET Framework3.5 is not installed in your PC.



If a message requiring restarting your PC is displayed, click "Yes" and restart your PC. Run "KEWLauncher.exe" from the CD after restarting the PC.

- (8) When the installation wizard completes, subsequent installation initiates automatically. Click "Next".



- (9) Repeat above step (4) through (7) to install the "KEW Windows for KEW 3128".

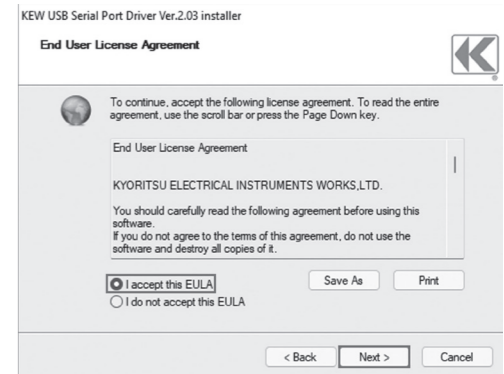
How to un-install "KEW Report":
Open the Control panel, click **Programs and Features** and select "KEW Report".

3. USB Driver Installation

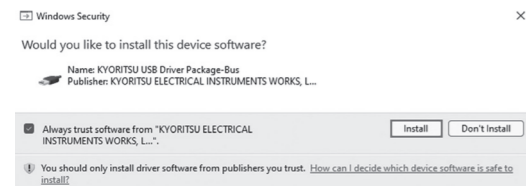
- (1) When KEW Report has been successfully installed in your computer, the following dialog box appears to start installing the USB driver. Click **Next**.



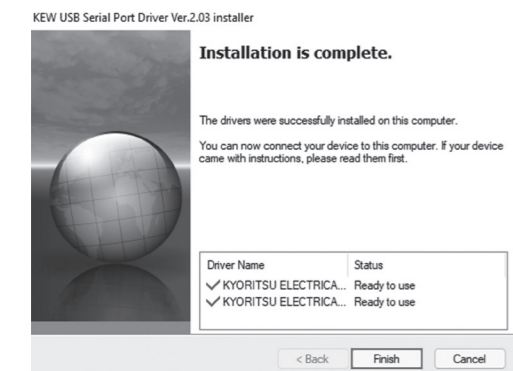
- (2) Read through and understand the End User License Agreement and click "I accept....", and then click **Next**.



- (3) If the following Security Warning message appears, click **Install**.



- (4) Installation completes when the following window appears. Click **Finish**.



The USB driver has been successfully installed.

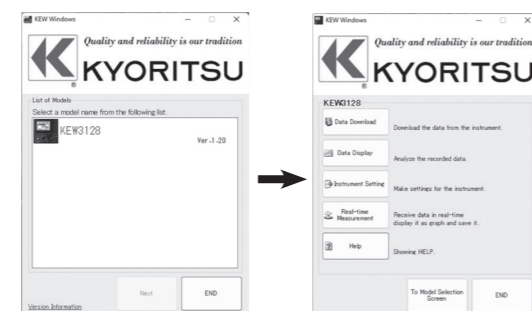
To restart the interrupted USB driver installation process, right click on the CD drive and click Open. Click and start "kewusbserial200_setup.exe" in the DRIVER folder.

How to un-install the USB driver:
Open the Control panel, click **Programs and Features** and select "Windows Driver Package – KYORITSU ELECTRICAL INSTRUMENTS WORKS, LTD. KYORITSU USB Driver Package-Bus".

4. Starting KEW Windows for KEW3128

Start the software by; 1) clicking the icon for "KEW Windows" on the desktop, or 2) clicking "Start" -> "Program" -> "KEW" -> "KEW Windows".

Then the Main Window of "KEW Windows" appears. Select the "KEW3128" and click "Next" or double-click on the "KEW3128" to start the software. Clicking "Exit" or "x" box at the upper right of the window quits the program.



Further detailed information is given in the **Help**.

MEMO

MEMO

MEMO



2-5-20, Nakane, Meguro-ku,
Tokyo, 152-0031 Japan
Phone: +81-3-3723-0131
Fax: +81-3-3723-0152
Factory: Ehime, Japan

www.kew-ltd.co.jp