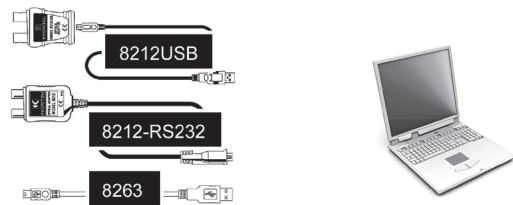


KEW Report Installation Manual



This manual contains instructions how to install the special software “KEW Report” supplied with MODEL8263, MODEL8212USB and 8212-RS232C.

1. Introduction

● Interface

This instrument is equipped with a USB interface.
Communication method: USB Ver1.1

The internal data of the instrument can be transferred to a PC via USB communication.

● System Requirements

- OS (Operation System)
For the supported OS, check the label on the CD case or visit our website.
- Display
1024×768 dots, 65536 colors or more
- HDD (Hard-disk space required)
100 Mbyte or more

● Trademark

- Windows® is a registered trademark of Microsoft in the United States.

The latest software is available for download from our website.
www.kew-ltd.co.jp



2. Installation of “KEW Report”

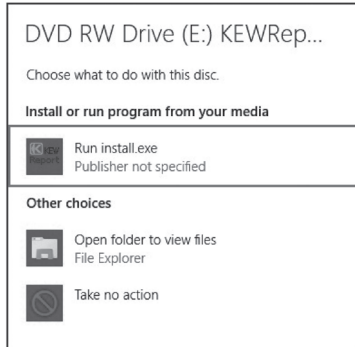
(For Windows 10 / 8.1)

- (1) Always check the followings before installing “KEW Report” .
 - To prepare your system for installation, please close all open programs.
 - Be sure NOT to connect the instrument to a PC until the installation completes.
 - Installation shall be done with Administrator right.

- (2) Insert the supplied CD-ROM containing “KEW Report” in your PC’ s CD-ROM drive. Then the following pop-up will appear at the upper right on the screen. Left-click on this box.

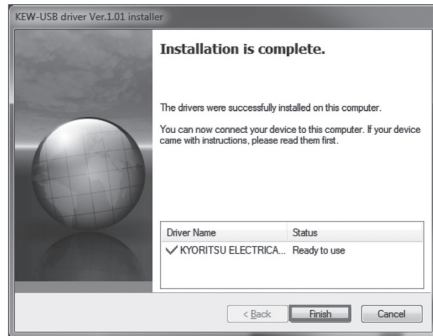
DVD RW Drive (E:) KEWReportV2.60
Tap to choose what happens with this disc.

- (3) Click **Run install.exe** when the box as shown below appears.
If User Account Control dialog box appears, click **Yes**.



- If neither (2) nor (3) appears, click the CD icon and run “install.exe” file.

- (4) Installation completes when the following window appears.
Click **Finish**.



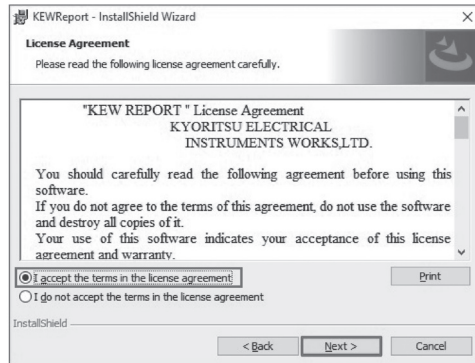
The USB driver has been successfully installed.

To restart the interrupted USB driver installation process, right click on the CD drive and click Open. Click and start “kewusbserial200_setup.exe” in the DRIVER folder.

How to un-install the USB driver:

Open the Control panel, click **Add/ Remove Programs** and select “**Windows Driver Package - KYORITSU ELECTRICAL INSTRUMENTS WORKS, LTD. KYORITSU USB Driver Package-Bus**” .

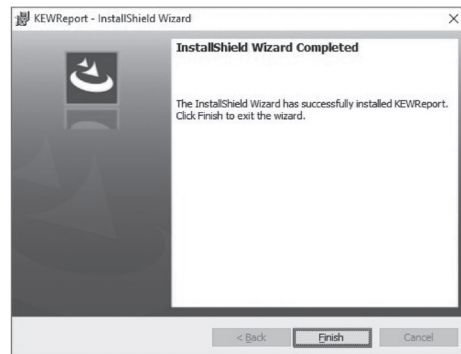
- (4) Read through and understand the License Agreement and click “I accept....” , and then click **Next**.



- (5) Click **Next** after entering the user information and other supplementary information, and click **Next**.

- (6) Confirm the information on installation, and then click **Install** to start installation.

- (7) Click **Finish** when “InstallShield Wizard Complete” dialog box appears. When the installation wizard completes, subsequent installation begins automatically. Please refer to **3. USB driver installation**.



How to un-install “KEW Report” :

Open the Control panel, click **Add/ Remove Programs** and select “KEW Report” .

3. USB Driver Installation

(For Windows 10 / 8.1)

- (1) When KEW Report has been successfully installed in your computer, the following dialog box appears to start installing the USB driver.
Click **Next**.



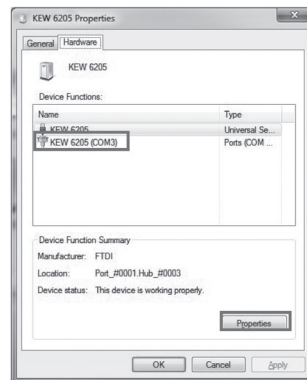
- (2) Read through and understand the End User License Agreement and click “I accept....” , and then click **Next**.



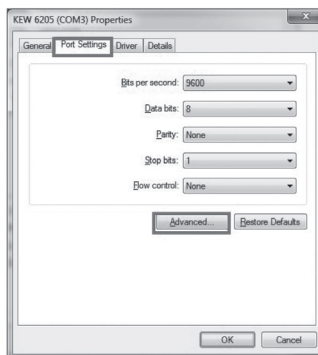
5. Changing COM Port No.

(For Windows 10 / 8.1)

- (1) Follow the procedures described in **4. Checking COM Port No.** and perform steps (1) to (3).
- (2) After performing step (3), select the displayed instrument name (**COMx**) and click **Properties**.



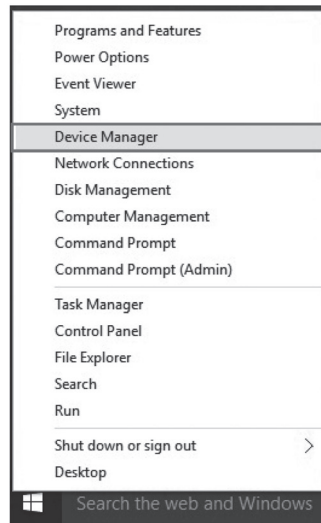
- (3) Click **Port Settings** tab, and then click **Advanced....**



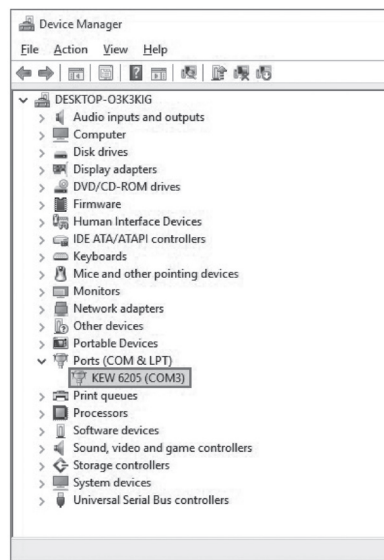
4. Checking COM Port No.

(For Windows 10 / 8.1)

- (1) Right-click **Start** button and then **Device Manager**.

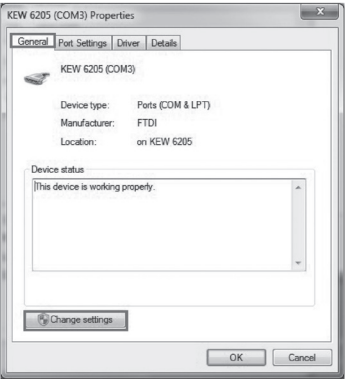


- (2) Click **Ports (COM & LPT)** to see the COM port number assigned for the instrument.

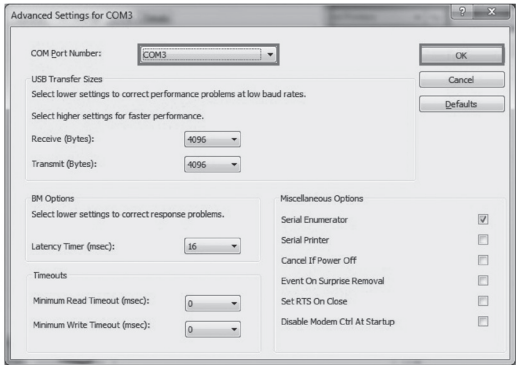


- (3) If the assigned number is out of COM1 to COM32, follow the instructions described in **5. Changing COM Port No.** and change the number accordingly.

*If **Advanced...** is gray and you cannot open it:
Click **General** tab and then **Change settings**.



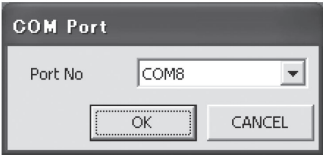
(4) Click and select a number (from COM1 to COM32) on the **COM Port Number:** box, and then click **OK**.



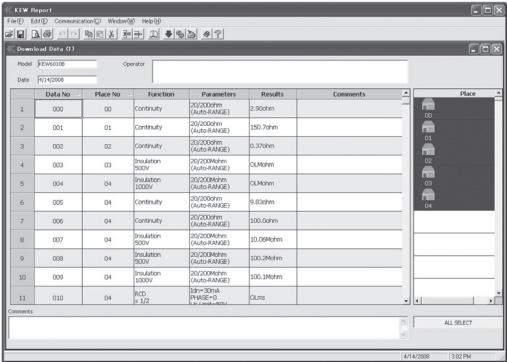
6. Starting KEW Report

Start “KEW Report” by; 1) clicking the icon for “KEW Report” on your desktop, or 2) clicking **Start -> Program -> KEW -> KEW Report**.

- (1) COM Port setting
Click **Communication -> COM Port** on the Main Window of “KEW Report”, and select the pre-set COM Port number.



- (2) Download
Click **Communication -> Download** on the Main Window of “KEW Report”. Then the following window appears. Click **Exit** or “x” box at the upper right of the window to close the program.



Further detailed information is given in the **HELP**.



**KYORITSU ELECTRICAL
INSTRUMENTS
WORKS, LTD.**

2-5-20,Nakane, Meguro-ku,
Tokyo, 152-0031 Japan
Phone: +81-3-3723-0131
Fax: +81-3-3723-0152
Factory: Ehime,Japan

www.kew-ltd.co.jp