

Installation Manual for

KEW PQA MASTER

This manual contains explanations how to install the special application **KEW PQA MASTER** and the USB drivers on Windows 10 PCs.

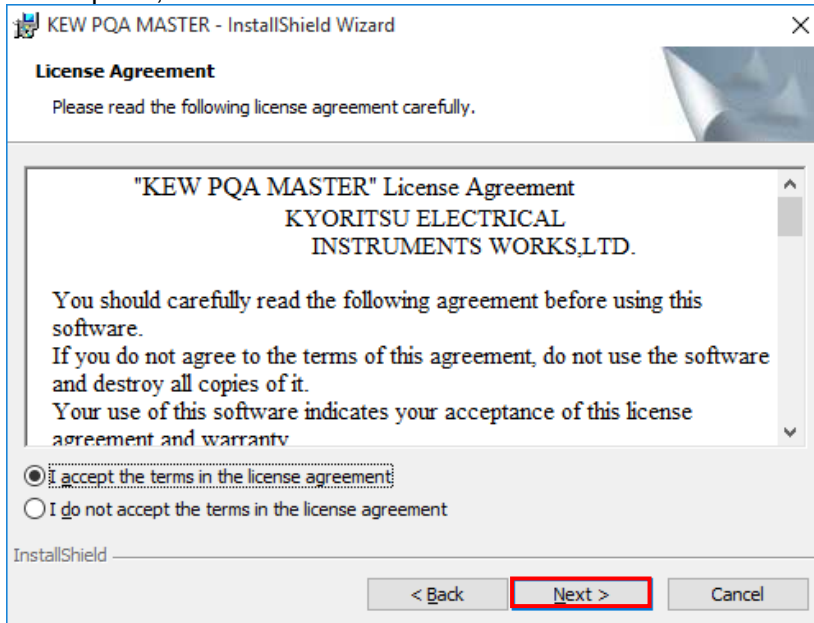
1 . Installation of KEW PQA MASTER

- (1) The following should be checked before installing this application.
- To prepare your system for installation, please close all open programs.
 - Be sure NOT to connect the instrument with the USB until installation completes.
 - Installation shall be done with Administrator right.
- (2) From our website, download the correct "KEW PQA MASTER" for your PC environment.
URL : <http://www.kew-ltd.co.jp/en/download/>

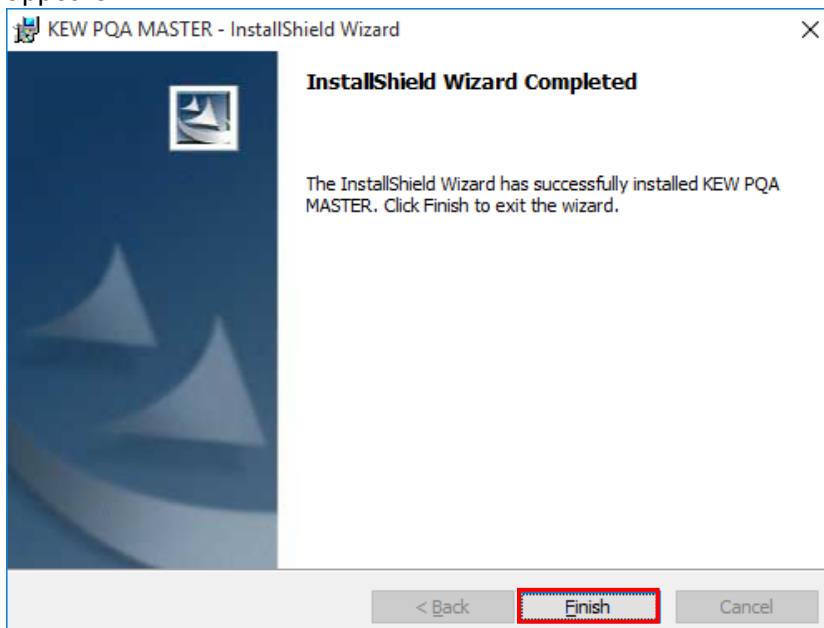
KEW PQA MASTER	setup_ENG.exe [English] (20.4 MB) setup_CHN.exe [Chinese] (30.1 MB) setup_ESP.exe [Spanish] (30.3 MB) setup_FRA.exe [French] (30.1 MB) setup_KOR.exe [Korean] (32.3 MB)	V2_10 (Jul.2014)	Windows Vista / 7 (32/64bit) / 8 (32/64bit)
	How to install: <i>When "KEW PQA MASTER" has been installed in your computer, be sure to uninstall it via Add/Remove Programs in Control Panel. Then install new "KEW PQA MASTER".</i> 1) Click the upper file name, it will be automatically download to the folder you chose. 2) Double-click "setup_XXX.exe", then installation starts automatically.		

- (3) Run "setup_XXX.exe" when download is completed.
If User Account Control dialog box appears, click **Yes**.

- (4) Read through and understand the License Agreement and click "I accept....", and then click **Next**.



- (5) Click **Next** after entering the user information and other supplementary information.
- (6) Confirm the information on installation, and then click **Install** to start an installation.
- (7) Click **Finish** when "InstallShield Wizard Complete" dialog box appears.



2 . Installing USB driver

- (1) From our website, download “KewPowerUsbDriver_2.exe”, and then run (uncompress) and save it into a folder that you specify.

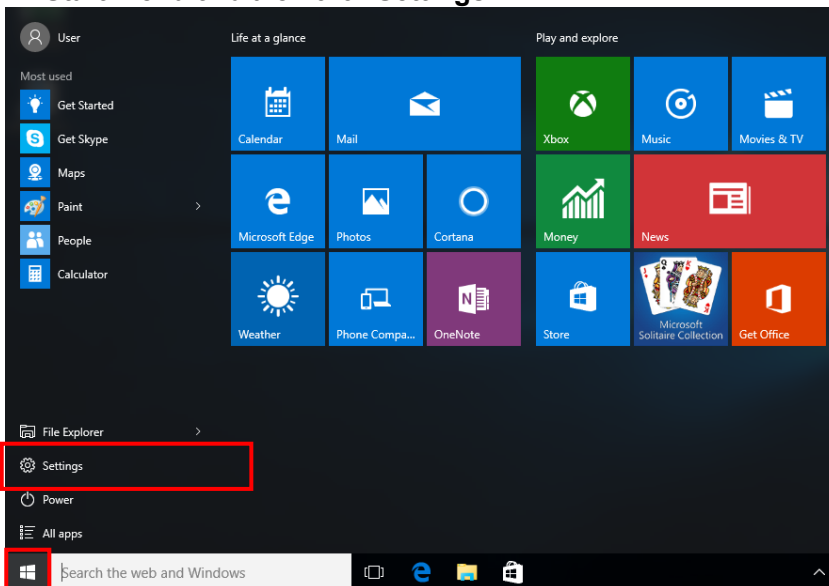


USB Device Driver	KewPowerUsbDriver_2.exe (835 KB)	Windows 7 (32/64bit) / 8 (32/64bit)
	KewPowerUsbDriver.exe (289 KB)	Windows Vista

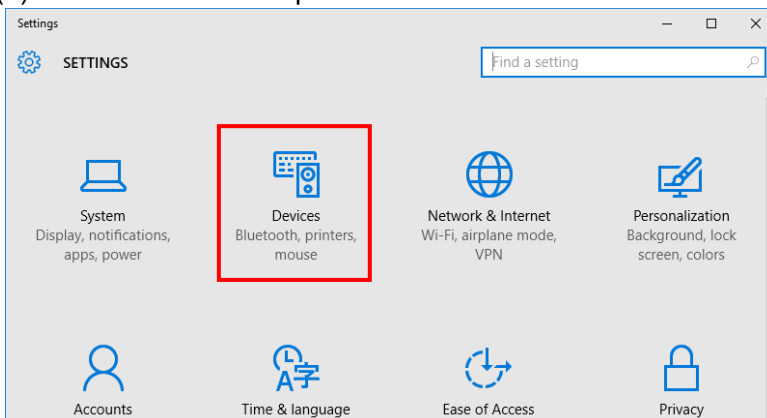
How to install:

- 1) Click the upper file name and save it to your desktop, and start it. Then it is uncompressed.
- 2) Select a folder to save the file. The same folder should be selected when installing the USB device driver.
- 3) Refer to the install manual below.
 - ▶ [Windows 8](#) (PDF: 1.32 MB)
 - ▶ [Windows 7](#) (PDF: 1.19 MB)
 - ▶ [Windows Vista](#) (PDF: 1.02 MB)

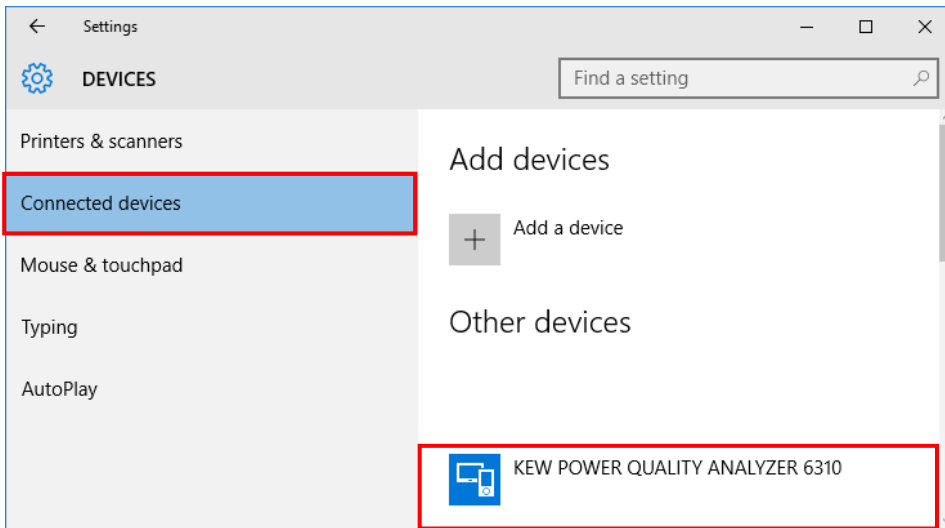
- (2) Connect KEW6310 and your PC with the USB cable supplied with the instrument. Then, click **Start menu** and then click **Settings**.



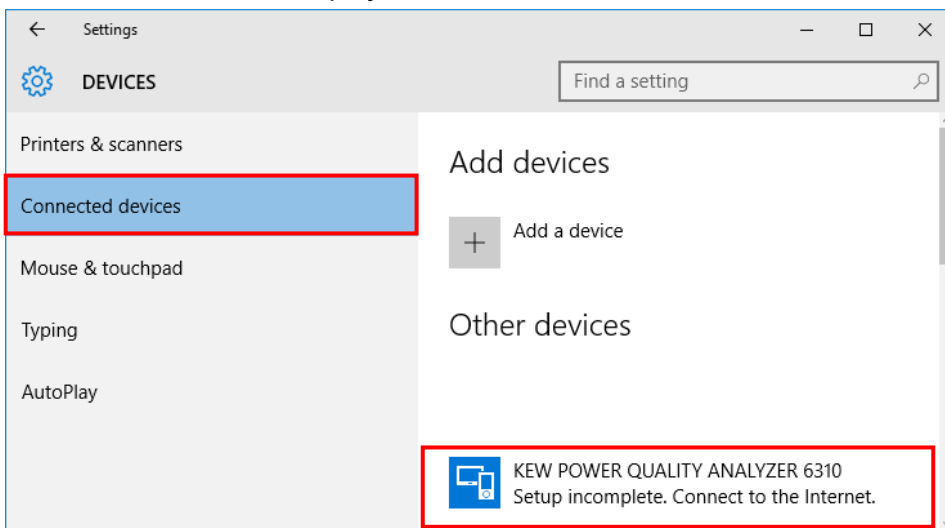
- (3) Click **Devices** and open a devices tab.



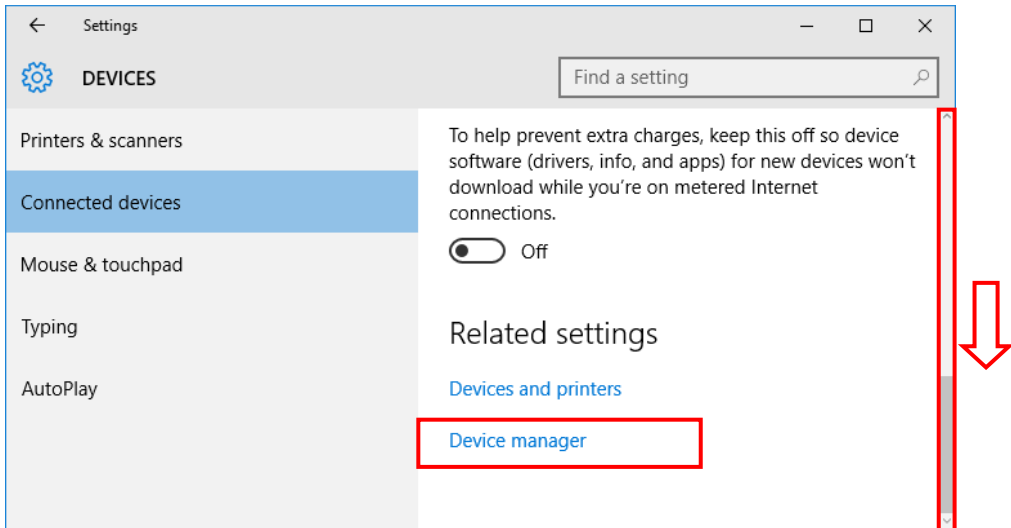
- (4) Click **Connected devices** and confirm that “KEW POWER QUALITY ANALYZER 6310” is displayed. When no message is displayed under the device name, it indicates that the application has been successfully installed.



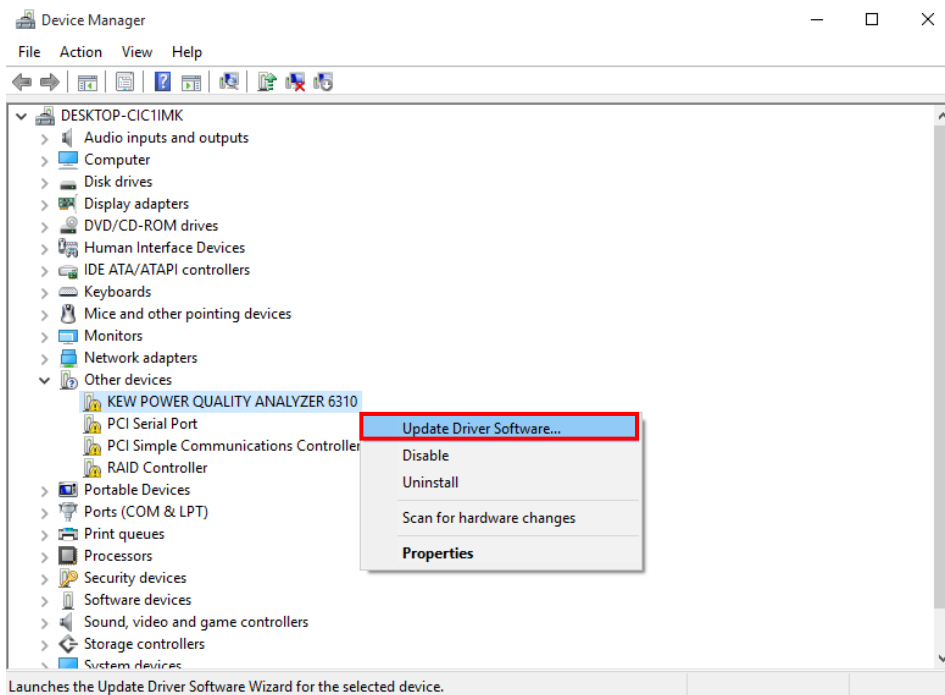
Follow the procedures described below and install the driver if a message shown below is displayed under the device name or the device name is not displayed.



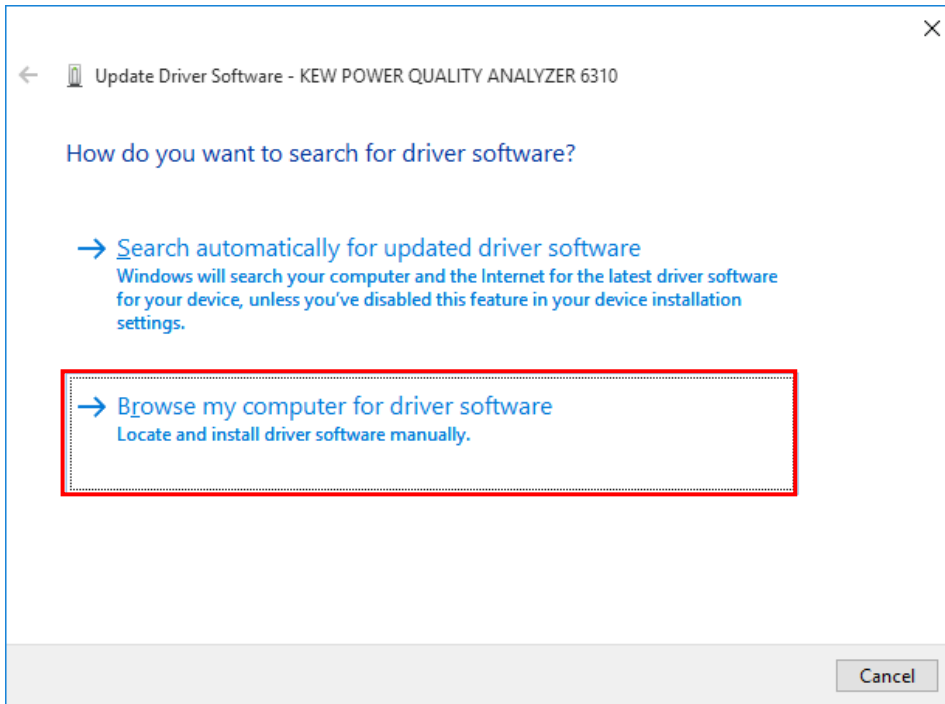
(5) Scroll down the screen and open **Device manager**.



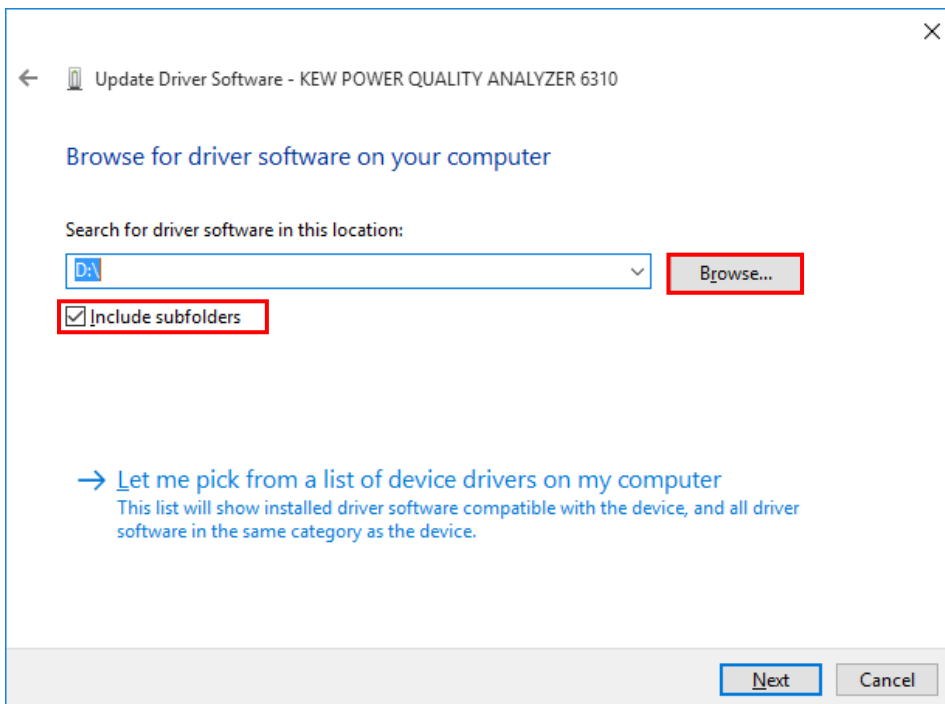
(6) Click **Other devices** and right click on “KEW POWER QUALITY ANALYZER 6310”. Then click **Update Driver Software**.



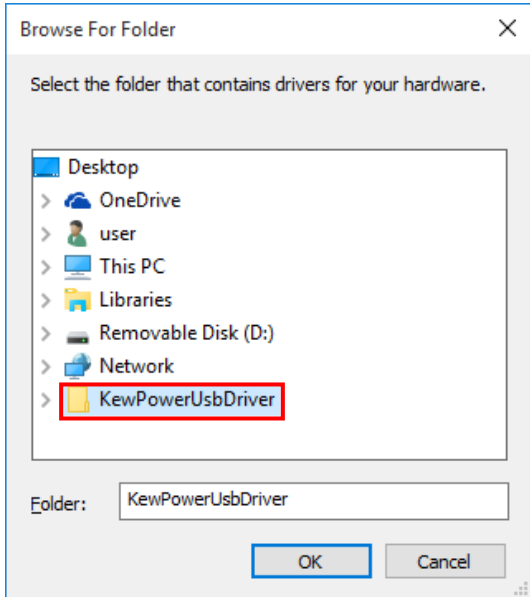
(7) Select "Browse my computer for driver software".



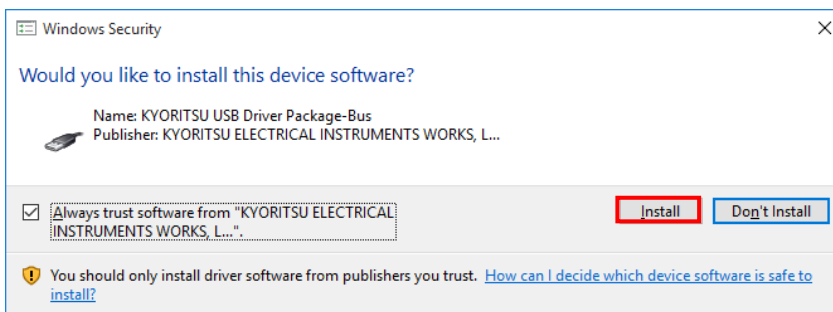
(8) Check the box for "Include subfolders", and then click **Browse**.



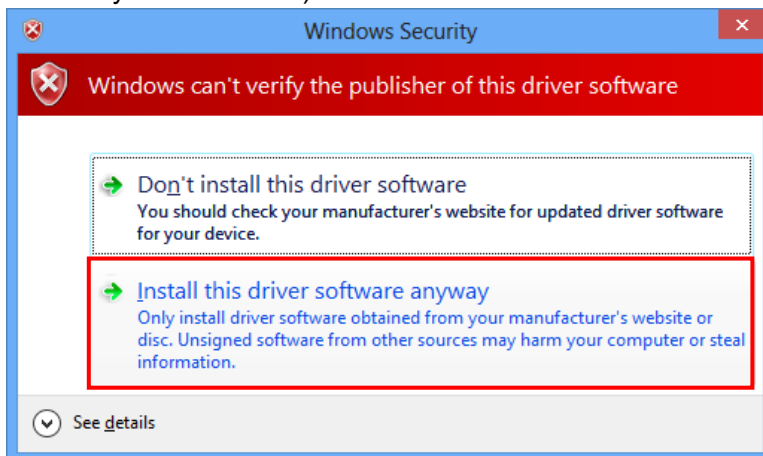
- (9) Select the file “KewPowerUsbDriver_2.exe (KewPowerUsbDriver)” which is uncompressed and saved at step (1) described above.



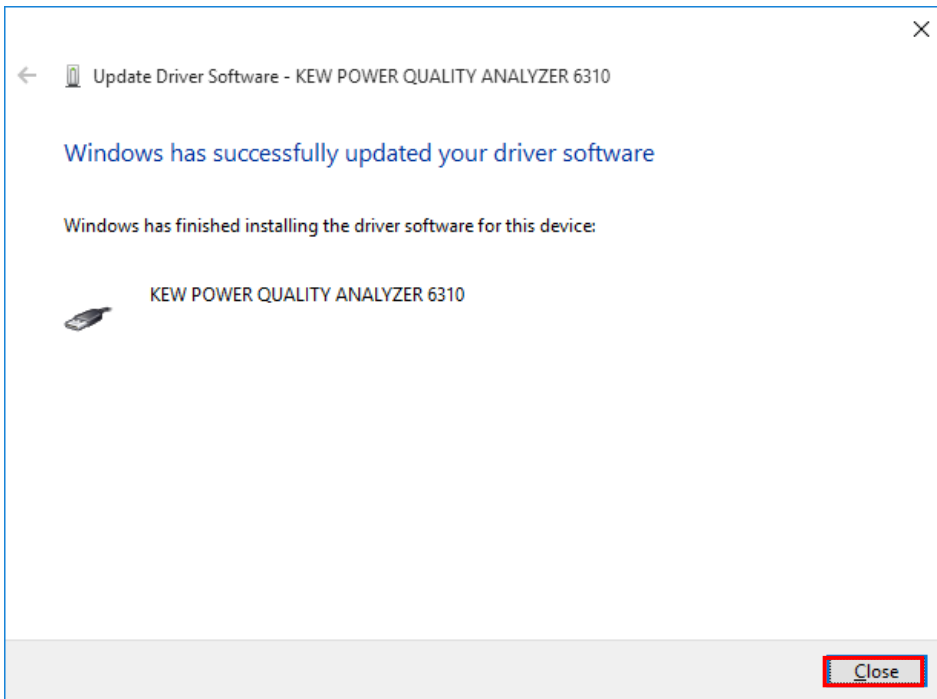
- (10) When the following confirmation message appears, after clicking **Next**, click **Install**.



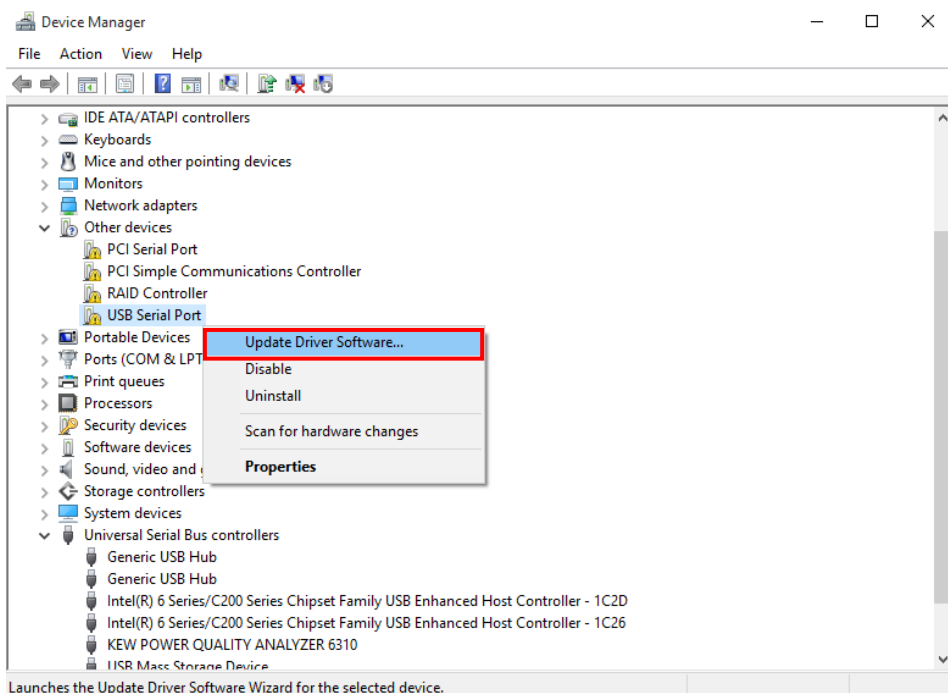
Select "Install this driver software anyway" if the following warning window appears. (There is no problem to continue installing because operation has already been verified.)



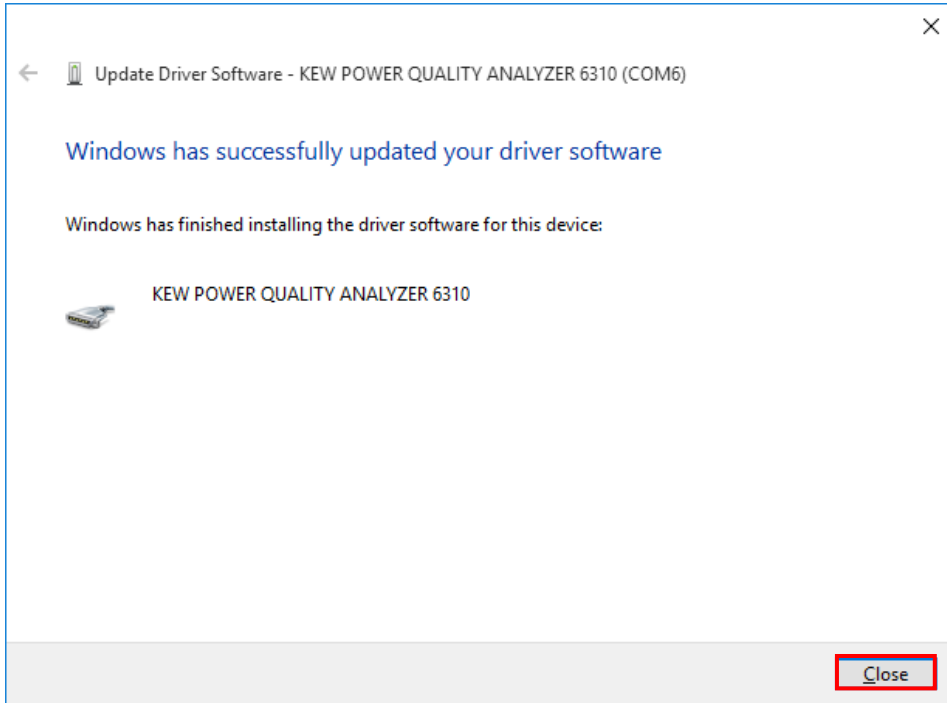
- (11) Install is completed when the wizard says "Windows has successfully updated your driver software".
Click **Close**.



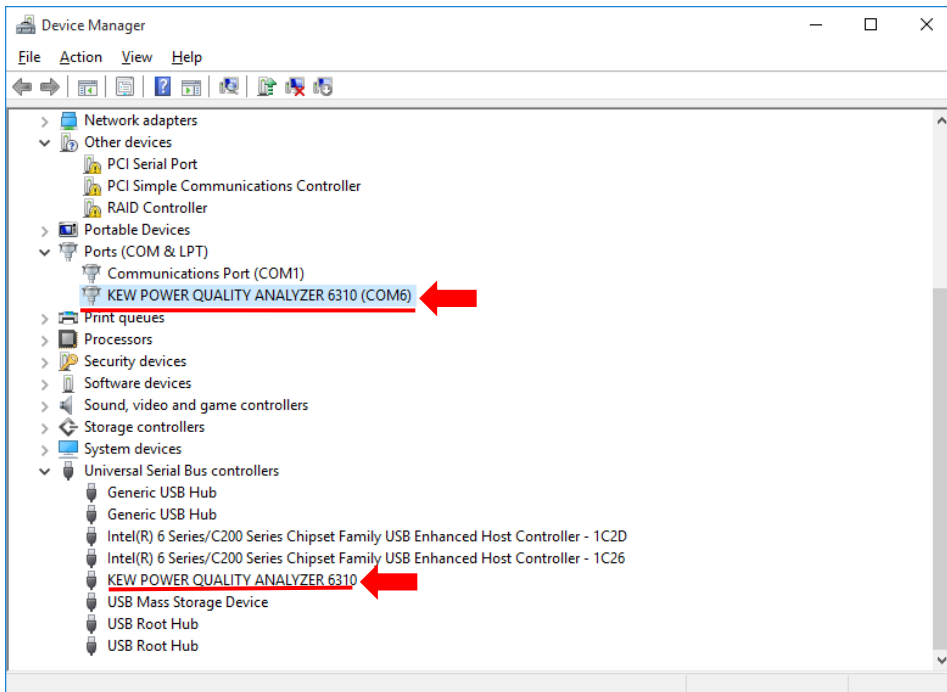
- (12) Click **Other devices** under the Device Manager, and then right-click on **USB Serial Port**.
Then click **Update Driver Software**.



- (13) Repeat above step (7) through (11). Installation is completed when the wizard says “Windows has successfully updated your driver software”. Click **Close**.



- (14) The following two icons will appear in the Device Manager when two drivers are successfully installed.





**KYORITSU ELECTRICAL
INSTRUMENTS
WORKS, LTD.**

2-5-20, Nakane, Meguro-ku,
Tokyo, 152-0031 Japan
Phone: +81-3-3723-0131
Fax: +81-3-3723-0152
Factory: Ehime, Japan

www.kew-ltd.co.jp