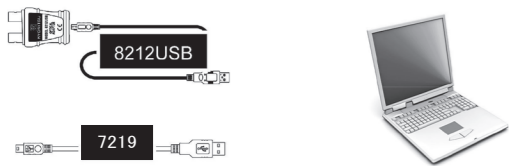


# KEW Report Installation Manual



This manual contains instructions how to install the special software "KEW Report" which is required when using MODEL8212USB and MODEL7219.

## 1. Introduction

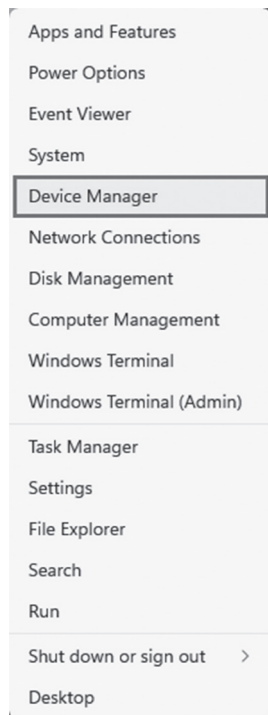
- **Interface**  
This instrument is equipped with a USB interface. Communication method: USB Ver1.1  
The internal data of the instrument can be transferred to a PC via USB communication.
- **System Requirements**
  - OS (Operation System)  
Please check on our website.
  - Display  
1024x768 dots, 65536 colors or more
  - HDD (Hard-disk space required)  
100 Mbyte or more
- **Trademark**
  - Windows® is a registered trademark of Microsoft in the United States.

The latest software is available for download from our website.  
www.kew-ltd.co.jp



## 4. Checking COM Port No.

- (1) Right-click **Start** button and then **Device Manager**.



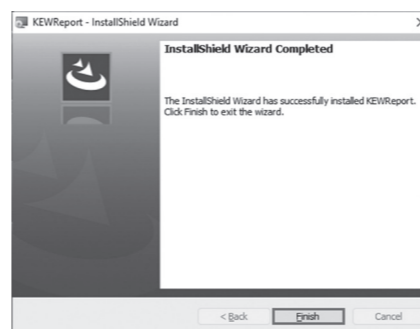
## 2. Installation of "KEW Report"

- (1) Always check the followings before installing "KEW Report".
  - To prepare your system for installation, please close all open programs.
  - Be sure NOT to connect the instrument to a PC until the installation completes.
  - Installation shall be done with Administrator right.
- (2) Please access our website ([www.kew-ltd.co.jp/en/](http://www.kew-ltd.co.jp/en/)) and go to "Download" and then "Software" and download "KEW Report" according to the instructions described on the page.
- (3) When download completes, click "setup\_ENG.exe" and click "Next".
- (4) Read through and understand the License Agreement and click "I accept...", and then click **Next**.



- (5) Confirm the information on installation, and then click **Install** to start installation.

- (6) Click **Finish** when "InstallShield Wizard Complete" dialog box appears. When the installation wizard completes, subsequent installation begins automatically. Please refer to **3. USB driver installation**.



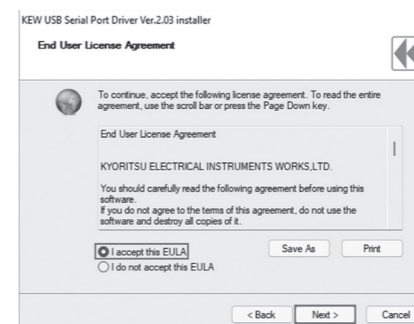
**How to un-install "KEW Report" :**  
Open the Control panel, click **Programs and Features** and select "KEW Report".

## 3. USB Driver Installation

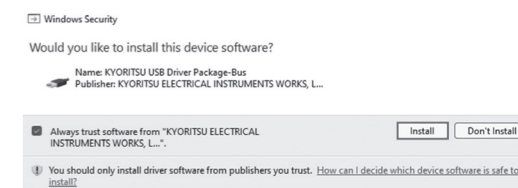
- (1) When KEW Report has been successfully installed in your computer, the following dialog box appears to start installing the USB driver. Click **Next**.



- (2) Read through and understand the End User License Agreement and click "I accept...", and then click **Next**.



- (3) If the following Security Warning message appears, click **Install**.



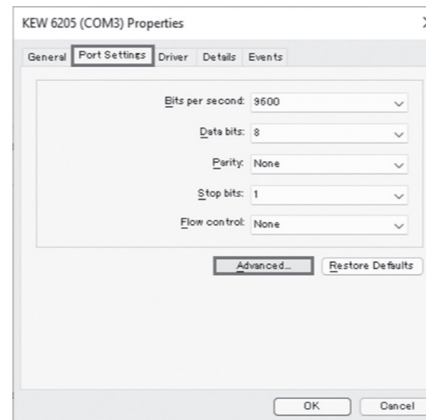
- (4) Installation completes when the following window appears. Click **Finish**.



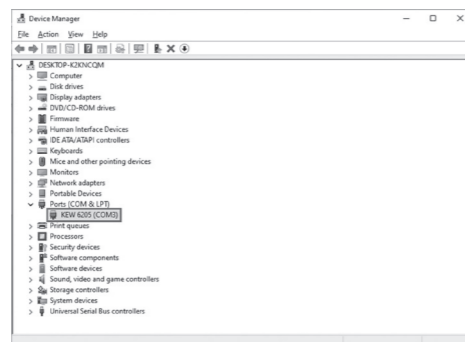
The USB driver has been successfully installed.

**How to un-install the USB driver:**  
Open the Control panel, click **Programs and Features** and select "**Windows Driver Package - KYORITSU ELECTRICAL INSTRUMENTS WORKS, LTD. KYORITSU USB Driver Package-Bus**".

- (3) Click **Port Settings** tab, and then click **Advanced...**



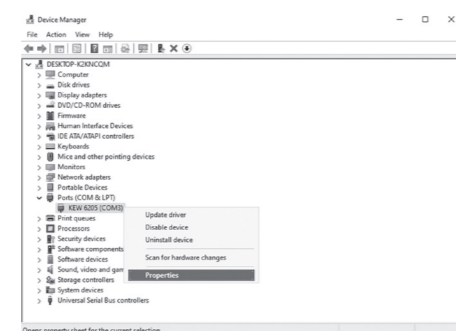
- (2) Click **Ports (COM & LPT)** to see the COM port number assigned for the instrument.



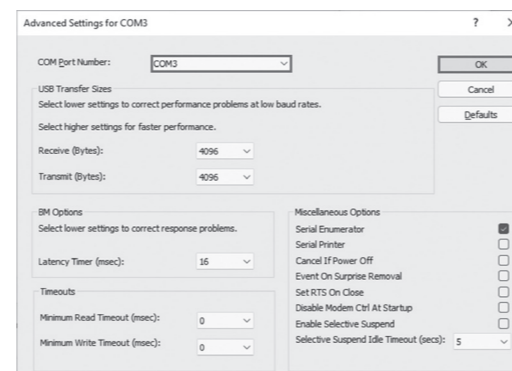
- (3) If the assigned number is out of COM1 to COM32, follow the instructions described in **5. Changing COM Port No.** and change the number accordingly.

## 5. Changing COM Port No.

- (1) Follow the procedures described in **4. Checking COM Port No.** and perform steps (1) to (3).
- (2) After performing step (3), select the displayed instrument name (**COMx**) and click **Properties**.



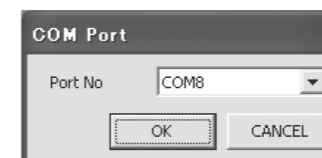
- (4) Click and select a number (from COM1 to COM32) on the **COM Port Number:** box, and then click **OK**.



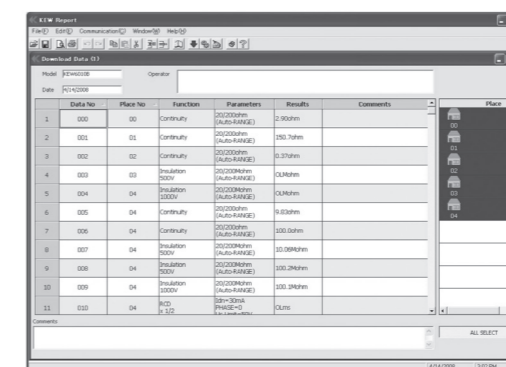
## 6. Starting KEW Report

Start "KEW Report" by; 1) clicking the icon for "KEW Report" on your desktop, or 2) clicking **Start -> Program -> KEW -> KEW Report**.

- (1) COM Port setting  
Click **Communication -> COM Port** on the Main Window of "KEW Report", and select the pre-set COM Port number.



- (2) Download  
Click **Communication -> Download** on the Main Window of "KEW Report". Then the following window appears. Click **Exit** or "x" box at the upper right of the window to close the program.



Further detailed information is given in the **HELP**.

**KYORITSU ELECTRICAL INSTRUMENTS WORKS, LTD.**  
2-5-20, Nakane, Meguro-ku, Tokyo, 152-0031 Japan  
Phone: +81-3-3723-0131  
Fax: +81-3-3723-0152  
Factory: Ehime, Japan  
[www.kew-ltd.co.jp](http://www.kew-ltd.co.jp)