



### Report creation function

This function makes it possible to load **user created Excel files** including values, texts, and lines as they are. You can add and enter the measured values and comments **in the blank cells** directly.

### Available features:

- Possible to enter measured values and serial numbers easily via Bluetooth communication.
- Fixed phrase registration - You can register texts or words you often use. Then, you just need to tap the desired one to enter in the cell.
- **Updated fixed phrases are saved. The stock phrase boxes are switchable depending on the work you perform.**
- Any value or text can be registered and entered in stead of the actual measured value when the measured value exceeds the preset threshold value.
- **Possible to make checkboxes by entering "☐" (character code U+2610) in the original file.**
- No data can be entered in the cells with diagonal line.
- This app automatically makes a backup copy of your working file. You can restart your work with the latest file anytime.

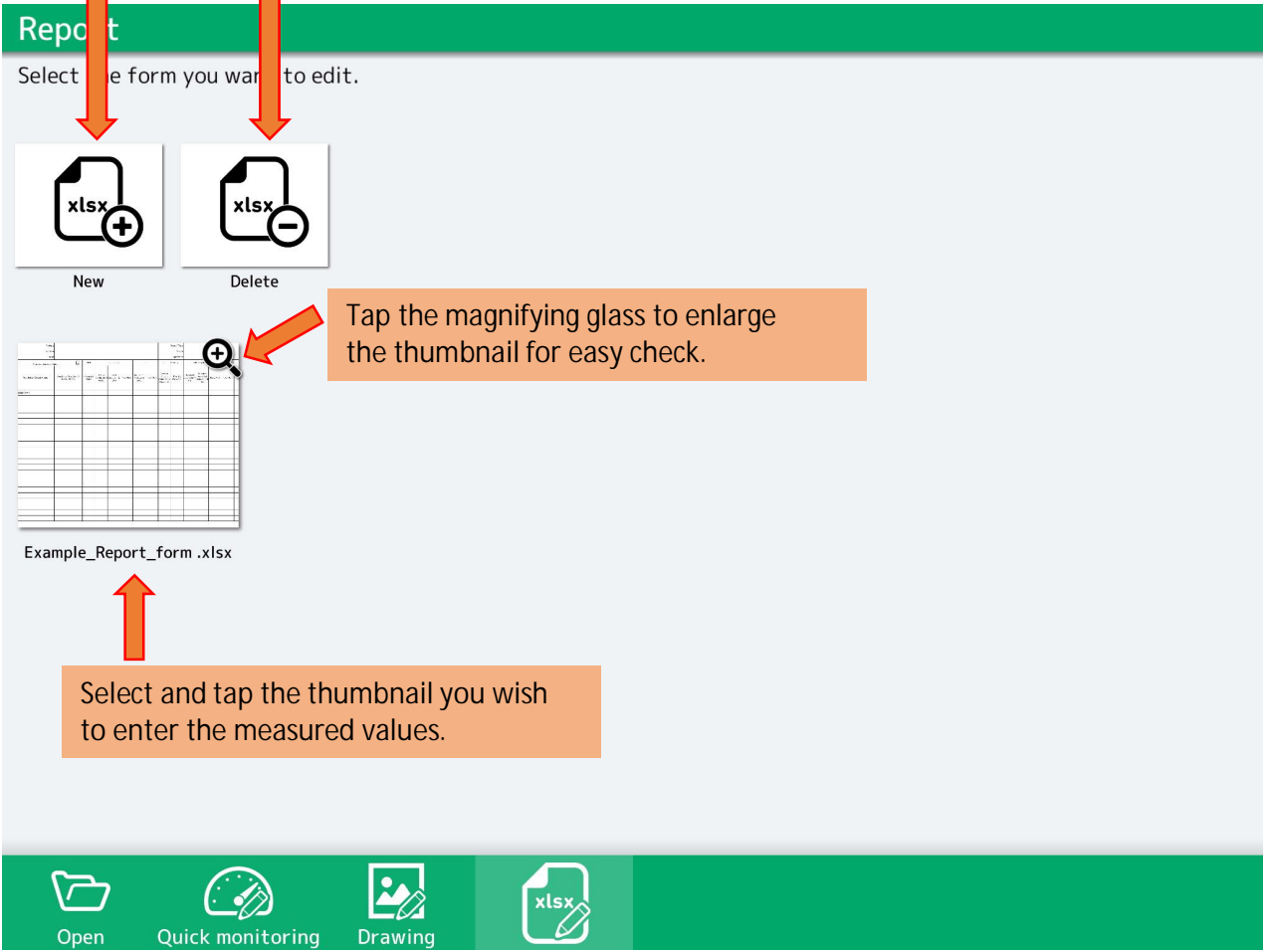
### Unavailable features:

- **Earlier versions of Excel (.xls) are not supported. (\*Supporting ".xlsx" form only.)**
- **Unable to display functions, figures, and images which are used in the original file.**
  - \* They aren't displayed on the app; however, the original data maintains above elements as they are.
- Values, lines, and font size used in the original file are unchangeable on the app.
- Colors of background, texts, and lines aren't changeable. Even various colors are used in the original file, they are turned into a single color on the app.
- Unable to keep the column width as same as the original size if some special fonts are contained.
- Impossible to link GPS info to the measured data with report creation function.

# Form selection screen

Tap here to select an Excel file. Then the selected file is added and displayed below as a new form.

Tap here to delete the form.



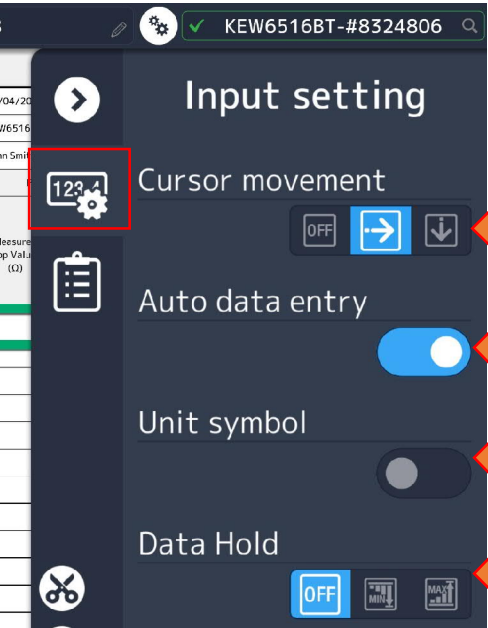
## Measured value entry screen

The screenshot displays the 'Example\_Report\_form\_2023-04-27-14-49-28' app interface. The top bar includes a 'Back' button, a document icon, the title 'Example\_Report\_form\_2023-04-27-14-49-28', a settings icon, and a search bar containing 'KEW6516BT-#8324806'. Below the top bar, the main content area shows a form for 'KEW6516BT' with fields for 'CONT 200mA', '0.31', and 'AUTO'. A table with columns like 'Test Point', 'Circuit Number', 'Conductor Sizes', 'MCB', 'Continuity', 'IR', 'CCC', 'Polarity', 'Fault Loop Impedance', and 'RCD' is visible. A sidebar on the right contains icons for 'Hide/show side menu', 'Input setting', 'Stock phrases', 'Cut (Delete)', 'Copy', 'Paste', 'Keyboard', 'Zoom out', 'Zoom in', and a '[List]' button. At the bottom, there are tabs for '1F-A', '1F-B', '2F', and '3F'. Various annotations with arrows point to specific UI elements, explaining their functions.

Annotations and their corresponding UI elements:

- Return to form selection screen.** Points to the 'Back' button in the top bar.
- Save as** Points to the document icon in the top bar.
- App Settings** Points to the settings icon in the top bar.
- Device to be connected with.** Points to the search bar in the top bar.
- Click to display comments when clicking "Open data".** Points to the pencil icon in the top bar.
- Hide/ show side menu** Points to the left arrow icon in the sidebar.
- Input setting** Points to the '123.4' icon in the sidebar.
- Stock phrases** Points to the list icon in the sidebar.
- Cut (Delete)** Points to the scissors icon in the sidebar.
- Copy** Points to the document icon in the sidebar.
- Paste** Points to the document with plus icon in the sidebar.
- Keyboard** Points to the keyboard icon in the sidebar.
- Zoom out** Points to the minus icon in the sidebar.
- Zoom in** Points to the plus icon in the sidebar.
- List of sheet names** Points to the '[List]' button in the sidebar.
- Window position change** Points to the top-left corner of the app window.
- A value entered in this box is automatically reflected to the selected cell: auto-entry feature is also available.** Points to the '0.31' input field.
- Currently selected cell: Moves to anywhere by tapping on the screen.** Points to the green box around the 'Pass' cell in the table.
- No data can be entered in the cells with diaconal line.** Points to a cell with a diagonal line in the table.
- Checkbox: Possible to enter checkmarks just by tapping the box. Enter "□" BALLOT BOX (Character code U+2610) in the original Excel file. Then it is displayed as checkbox on the app.** Points to a checkbox in the table.
- Tap to switch the sheets.** Points to the '2F' tab at the bottom.

# Side menu



Cell movement direction, after pressing Enter, is changeable: to right, or down and also disable cell movement is possible.

Turn on to enable auto-entry of measured values in cells after measurement.

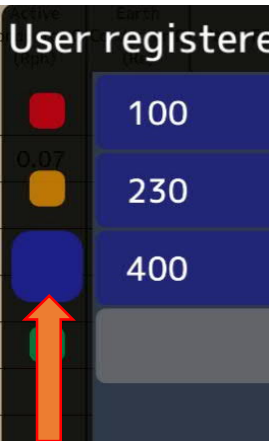
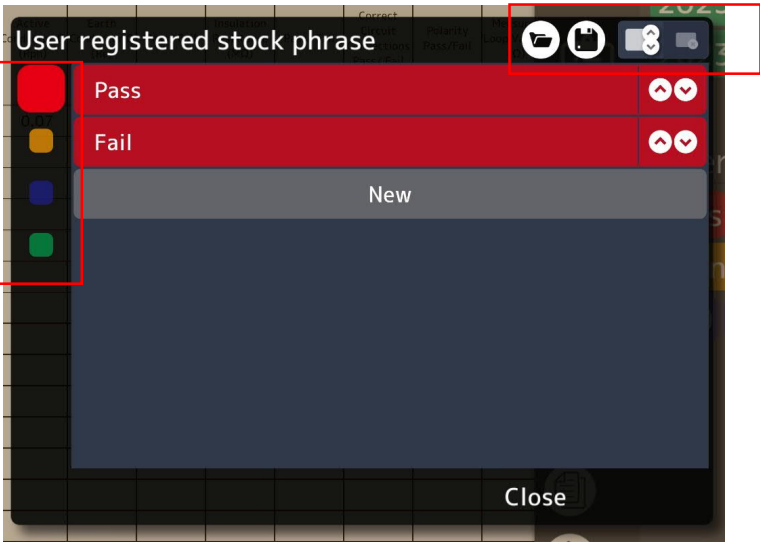
Turn on to add a unit for the displayed measured values.

Activate auto-entry of the maximum (MAX) or minimum (MIN) values in cells during measurement.

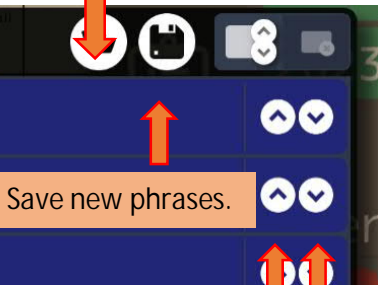


Date, model name, and serial number are automatically displayed. Tap the desired item you wish to enter in a cell.

Tap this button to register new stock phrases. You can just tap the listed item you wish to enter in a cell.



View the saved phrases.

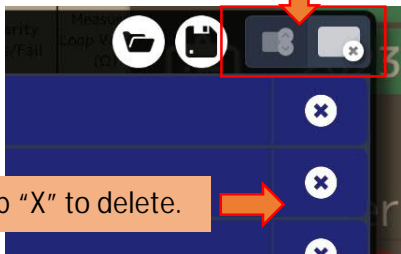


Save new phrases.

Change the order of the registered phrases.

Tap to switch change of order and item deletion.

Select the background color of stock phrase.

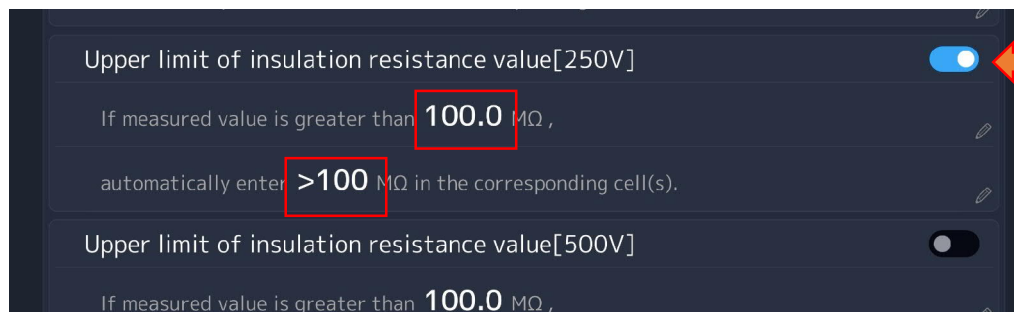


Tap "X" to delete.



## App setting:

This setting is applied to enter values measured by using insulation resistance tester.



Tap the slider to turn on this function.

## FAQ

### Loading error

This isn't Excel book (\*.xlsx).  
Check the saved format.

OK

### #File loading error

If the screen shows the error message like the one on the left, the file you're trying to load may be "Strict Open XML" format. Open the file on a PC and "Save As" in Excel format, and then try again.

### # Unnecessary blank cells are displayed, or some cells aren't displayed.

This app shows the cells on screen based on the "last cell position" in the Excel file.

Blank cells may be displayed if some cell settings have been done.

Please open the Excel file on a PC and press "[Ctrl]+[G]" to check the last cell location.

Number of sheets is unlimited, although display area is 100 rows x 200 columns (GR) per sheet.

Cells outside of above range aren't displayed.

### # The original formatting is lost.

Depending on the font used in a file, the original format is changed and becomes elongated. In such a case, please change the font and apply it to all sheets in the file and reload the data.

# FAQ

#Is it possible to use functions?

Basically, the app doesn't support functions in Excel.

Some calculation can be performed when converting the info in the cells to numerical value after opening the saved Excel file.

#App automatically shuts down when opening a file.

This may happen when Excel formulas such as a link to jump to other files or complex functions are used. We're sorry to trouble you, but please delete them and try to reload the file.

#Wish to change the font size or text position.

We're sorry, it is impossible at this time.

The app keeps the font size and the text position (left align, center, right align) based on the original format. If you need or wish to make some changes, please edit the original file first, and then load it again.

#Wish to use the saved stock phrase database on the other tablet devices.

After saving your stock phrases, check the "KEW Smart" folder in the storage of your Bluetooth device. Then you can find "phrases" folder. In that folder, your phrase file is saved with extension ".json". Please copy and paste this file in the same folder on the other device.