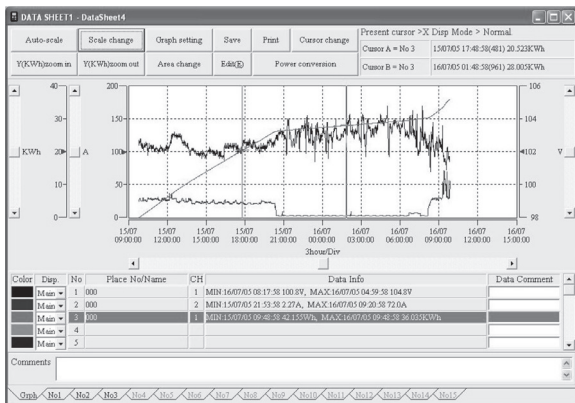


INSTALL MANUAL



PC software for Logger Series
5001, 5010/5020

KEW LOG Soft 2



KYORITSU ELECTRICAL INSTRUMENTS
WORKS, LTD.

Contents

1 . Introduction	15
2 . Installing “KEW LOG Soft 2”	16
3 . Installing USB driver	20
4 . Starting “KEW LOG Soft 2”	23
5 . Features of “KEW LOG Soft 2”	24
6 . Trouble shooting	24

KEW5020



This manual contains instructions how to install the software “KEW LOG Soft 2” supplied with MODEL5001 and KEW5010/ 5020.

1 . Introduction

● Interface

Our Loggers are equipped with USB interface.
Communication method: USB 2.0

This is an application software for Windows PC. The following can be done by using this software.

- * Data communication with our Loggers (5001 and 5010/5020)
- * Downloading the data files to PC for edit, analysis and print.
The downloaded data can be saved on a PC.
- * Adjusting settings of our Loggers.

● System Requirements

- OS (Operation System)
For supported OS, please check the version label of the CD case or visit our website.
- Display
1024 x 768 dots, 65536 colors or more
- HDD (Hard-disk space required)
1 Gbyte or more

● Trademark

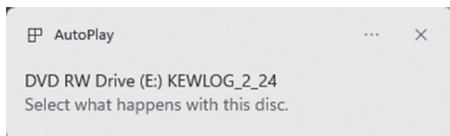
- Windows® is a registered trademark of Microsoft in the United States.

The latest software is available for download from our homepage.
<http://www.kew-ltd.co.jp>

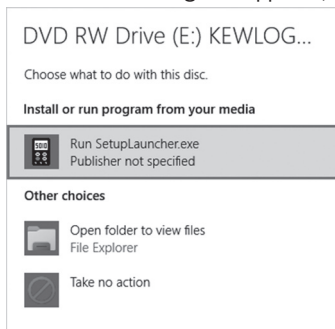
 **KYORITSU ELECTRICAL INSTRUMENTS WORKS, LTD**

2 . Installing “KEW LOG Soft 2”

- (1) The following should be checked before installing this software.
- To prepare your system for installation, please close all open programs.
 - Be sure NOT to connect the instrument with the USB until installation completes.
 - Installation shall be done with Administrator right.
- (2) Insert the CD-ROM in your PC's CD-ROM drive.
Left click on the following message when it appears at on the screen.

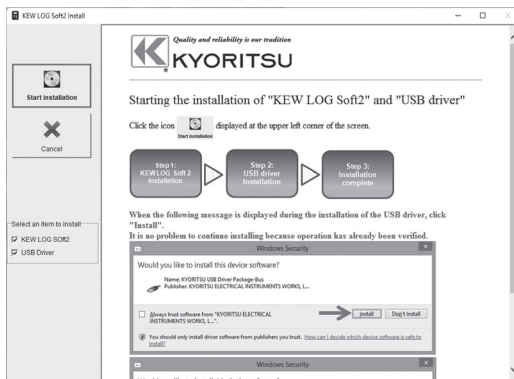


The following pop-up will appear. Click “Run SetupLauncher.exe”.
If the User Account Control dialog box appears, click “Yes” .

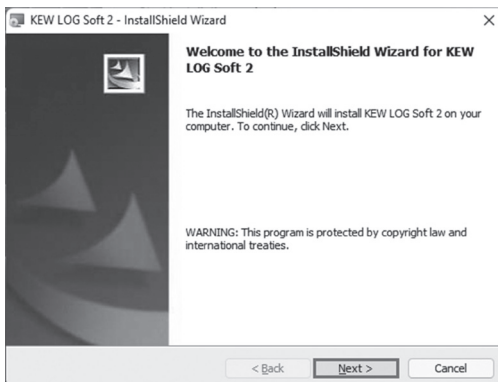


If above pop-up does not appear, open “Explore” or “Computer” and run the “Run SetupLauncher.exe” in the CD icon.

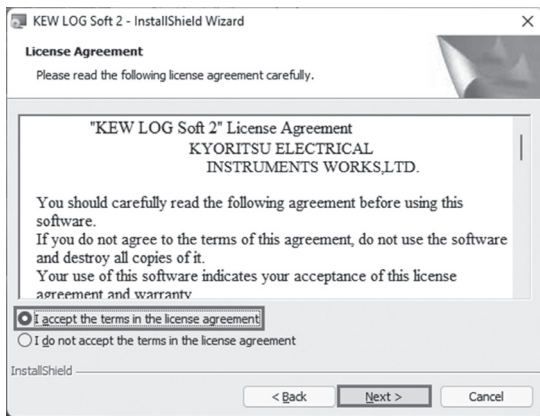
- (3) The following window appears after clicking “Run SetupLauncher.exe” . Click the “Start installation” icon displayed at the upper left of the window.



- (4) The following window will appear when the installation of “KEW LOG Soft 2” starts. Click “Next” .

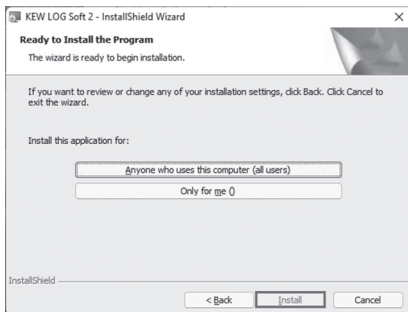


- (5) Read through and understand the License Agreement and click “I accept...”, and then click “Next” .

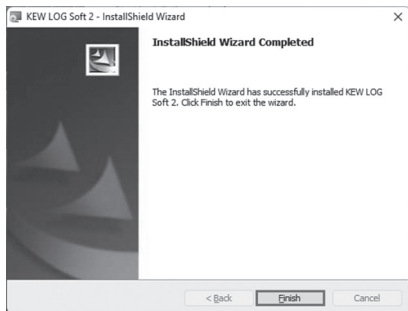


- (6) Click “Next” after entering the user information and other supplementary information.
- (7) Confirm the folder where the software will be installed in, and click “Next” .

- (8) Confirm the information on installation, and then click “Install” to start installation.



- (9) Click “Finish” when “InstallShield Wizard Complete” dialog box appears.



When above installation wizard is completed, your PC will be ready for the subsequent installation. Please refer to Chap. 3 “Installing USB driver” and install the USB driver.

How to un-install the PC Software:

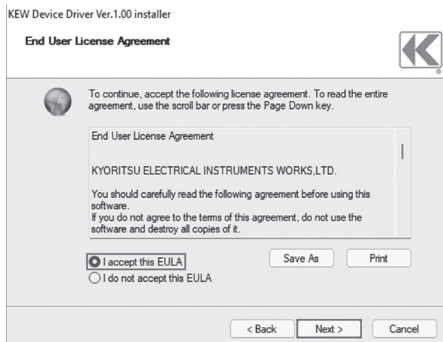
Access to the “Control Panel” and double click on the “Programs and Features” and remove the “**KEW LOG Soft 2**”.

3 . Installing USB driver

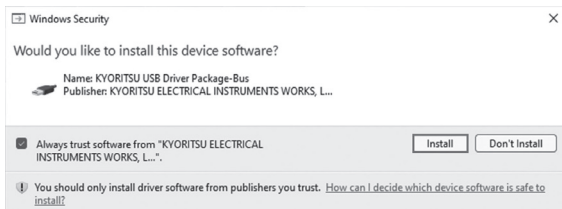
- (1) When the installation of KEW LOG Soft 2 is completed, the following message will appear and the installation of the USB driver initiates. Click “Next” .



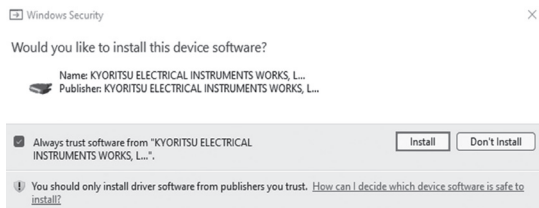
- (2) Read through and understand the End User License Agreement and click “ I accept...” , and then click “ Next”.



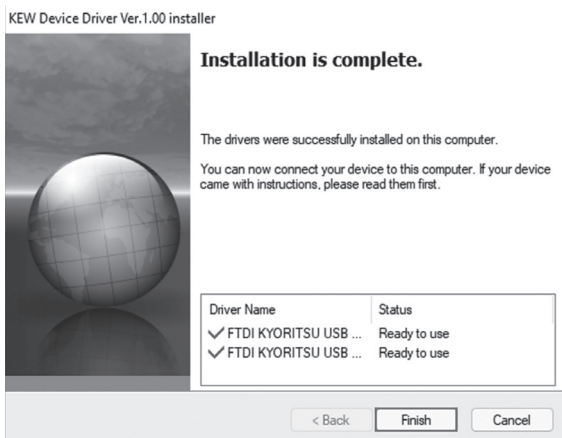
(3) If the following warning window appears, click “Install” .



(4) If another warning window as shown below appears, click “Install” again.



- (5) Installation is completed when the wizard finishes. Click “Finish” .



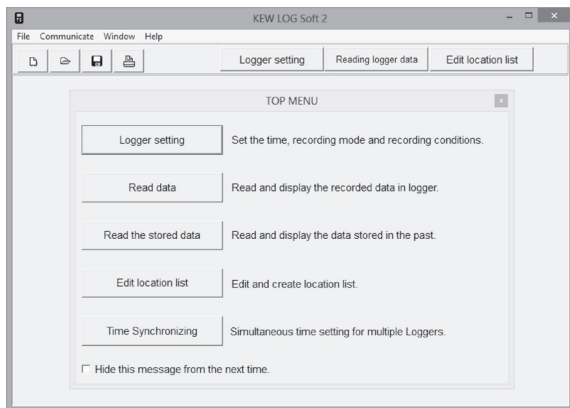
Now the USB driver installation is completed. Connect the Logger and the PC for data communication.

- ※ If the installer was interrupted before the driver could be installed, right click on the CD drive and click “Open” . Find the “DRIVER” folder on the displayed window, and run “*KewLoggerUsbDriver100_setup.exe*” to restart the installer.

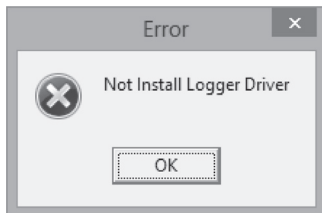
4. Starting “KEW LOG Soft2”

Double-click the “KEW LOG Soft 2” icon on your desktop, or click “Start” → “Program” → “KEW” → “KEW LOG Soft 2”.

The main window for “KEW LOG Soft 2” with top menu will appear. Select a desirable menu and download the recorded data from Logger or adjust settings.



* The following error message may appear after the installation of the USB driver is completed, when starting “KEW LOG Soft 2” before connecting Loggers.



5. Features of “KEW LOG Soft 2”

Features of “KEW LOG Soft 2” are as follows.

- ◆ Logger setting
Set the time and recording conditions for Logger.
- ◆ Data read
Read the data from Logger, and display it in graphic and list forms.
- ◆ Edit, print and save logger data
Can abstract a part of data from the list of logger data, and can copy graph image and save data in text format (.csv).
- ◆ Edit the location list
Edit the location name corresponding to its location No.
- ◆ Sync time setting
Adjust the clocks of multiple Loggers simultaneously.

For further details, please refer to “KEW LOG Soft 2 - Help” .

* Click the “KEW LOG Soft 2-Help” icon on the desktop.

* Click “Help” on the “KEW LOG Soft 2” window, and then click “KEW LOG Soft – Help” .

6. Trouble shooting

If you are having problems or questions, please visit our website and click the “Support” tab, and then click “General & Technical FAQ” → “Loggers” .

For the latest news and information, visit our website.

<http://www.kew-ltd.co.jp>

MEMO



**KYORITSU ELECTRICAL
INSTRUMENTS
WORKS, LTD.**

2-5-20, Nakane, Meguro-ku,

Tokyo, 152-0031 Japan

Phone: +81-3-3723-0131

Fax: +81-3-3723-0152

Factory: Ehime, Japan

www.kew-ltd.co.jp