

KEW Windows for KEW6315

Installation Manual



KEW6315

This manual contains instructions how to install the software “KEW Windows for KEW6315” for KEW6315.

1. Introduction

- Interface
This instrument is equipped with USB and Bluetooth interfaces.
Communication method : USB Ver.2.0
Bluetooth : Bluetooth Ver.5.0
Compliant profile: GATT

The followings can be done by USB/ Bluetooth communication.

- * Downloading files in the internal memory of the instrument to a PC
- * Making settings for the instrument via a PC
- * Displaying the measured results on a PC in graphic form in real-time, and also saving the measured data at the same time

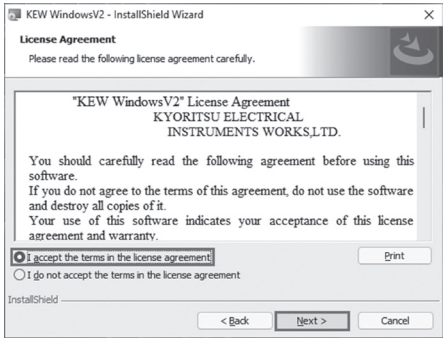
- System Requirements
 - OS(Operation System)
Please check on our website.
 - Display 1024 × 768 dots, 65536 colors or more
 - HDD (Hard-disk space required)
1Gbyte or more (including Framework)
 - .NET Framework (4.6.1 or later)
- Trademark
 - Windows® is a registered trademark of Microsoft in the United States.
 - Bluetooth® is a registered trademark of Bluetooth SIG.

The latest software is available for download from our website.
www.kew-ltd.co.jp



2. Installing “KEW Windows for KEW6315”

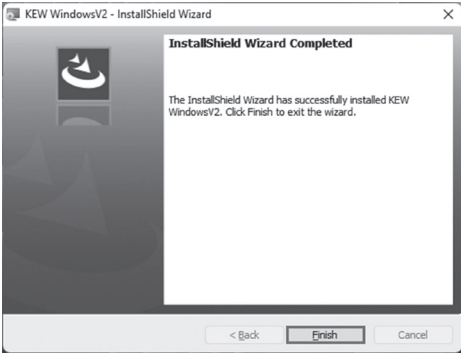
- (1) The followings should be checked before installing this application.
 - To prepare your system for installation, please close all open programs.
 - Be sure NOT to connect the instrument to the PC until installation completes.
 - Installation shall be done with Administrator right.
 - To use KEW Windows for KEW6315, .NET Framework 4.6.1 or later is required. If .NET Framework 4.6.1 or later is not installed in your PC, it will be automatically installed when installing this application. Internet connection is required to install .NET Framework 4.6.1 or later.
- (2) Please access our website (www.kew-ltd.co.jp/en/) and go to “Download” and then “Software” and download “KEW Windows for KEW 6315” according to the instructions described on the page.
- (3) When download completes, click “KewWin6315vXXXInst_eng.exe” and click “Next”.
- (4) Read through and understand the License Agreement and click “I accept....”, and then click “Next”.



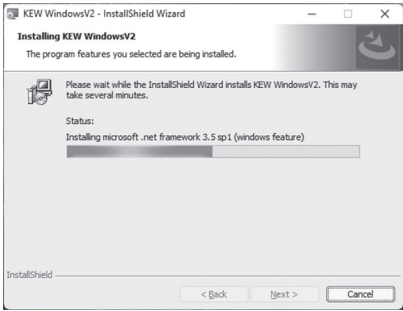
- (5) Click “Next” after entering the user information and other supplementary information, and click “Next”. **Ensure that internet connection is established, otherwise the installation of this application may be incomplete.**

- (6) Confirm the information on installation, and then click “Install” to start installation.

- (7) Click “Finish” when “InstallShield Wizard Complete” dialog box appears.



The following box will appear if .NET Framework 4.6.1 or later is not installed in your PC.



If a message requiring restarting your PC is displayed, click “Yes” and restart your PC.

- (8) When the installation wizard completes, subsequent installation initiates automatically.



- (9) Repeat above step (4) through (7) and complete the installation.

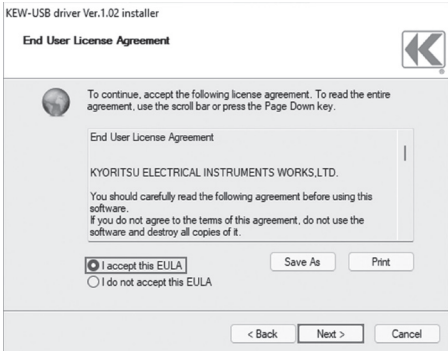
*** How to uninstall the PC Software:**
Access to the “Control Panel” and double click on the “Programs and Features” to remove the “**KEW WindowsV2**” and “**KEW Windows for KEW6315**”.

3. Installing USB driver

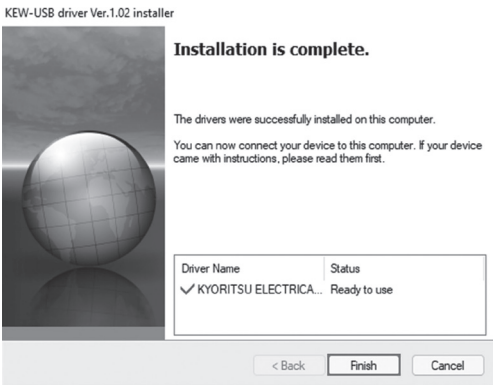
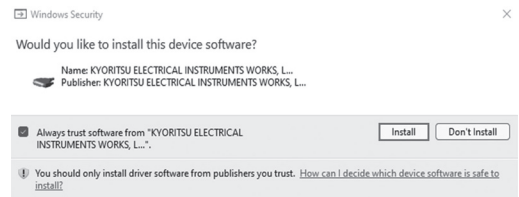
- (1) When KEW Windows for KEW6315 has been successfully installed in your computer, the following dialog box appears to start installing the USB driver. Click “Next”.



- (2) Read through and understand the End User License Agreement and click “I accept....”, and then click “Next”.



- (3) If the following Security Warning message appears, click “Install”.

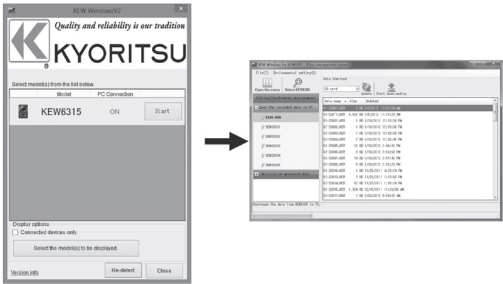


The USB driver has been successfully installed. Power on KEW 6315 first, and then connect to your PC.

4. Starting “KEW Windows for KEW6315”

Click the “**KEW WindowsV2**” icon on your desktop, or click “**Start**” -> “**Program**” -> “**KEW**” -> “**KEW WindowsV2**”. Ensure that KEW 6315 gets started before connecting KEW 6315 to your PC. Then start “KEW WindowsV2”.

The main window for “KEW WindowsV2” appears. Select “KEW6315” and click “Start” or double click on the “KEW6315” to get the KEW6315 started. Click “Close” or close button (x) on the right-top to end the program.



For further instructions, please read the instruction manual. Click (Double click) the desktop shortcut to “KEW Windows for KEW6315 MANUAL”.

MEMO

MEMO

MEMO



KYORITSU ELECTRICAL INSTRUMENTS WORKS, LTD.

2-5-20, Nakane, Meguro-ku,
Tokyo, 152-0031 Japan
Phone: +81-3-3723-0131
Fax: +81-3-3723-0152
Factory: Ehime, Japan

www.kew-ltd.co.jp