

KEW Windows for KEW5050

Installation Manual



This manual contains instructions how to install the software “KEW Windows for KEW5050” for KEW5050.

1. Introduction

• Interface

This instrument is equipped with USB interfaces.
Communication method: USB Ver2.0

USB communication using a special software “KEW Windows for KEW5050” allows:

- downloading files in the SD card to a PC,
- data analysis* and making settings of KEW5050.

* Automatic generation of graphs and lists based on the recorded data by just one click. Data management of different settings for multiple KEW5050 units and recorded data.

• System Requirements

- OS(Operation System)
Please check on our website.
- Display
1024 × 768 dots, 65536 colors or more
- HDD (Hard-disk space required)
1Gbyte or more (including Framework)
- .NET Framework 3.5 and .NET Framework 4.6 or later

• Trademark

- Windows® is a registered trademark of Microsoft in the United States.

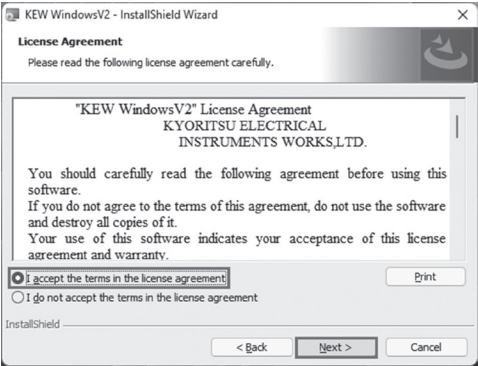
The latest software is available for download from our website.

www.kew-ltd.co.jp

 KYORITSU ELECTRICAL INSTRUMENTS WORKS, LTD.

2. Installing “KEW Windows for KEW5050”

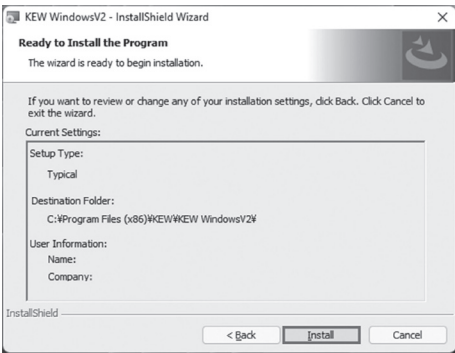
- (1) The followings should be checked before installing this software.
 - To prepare your system for installation, please close all open programs.
 - Be sure NOT to connect the instrument to the PC until installation completes.
 - Installation shall be done with Administrator right.
 - To use KEW Windows for KEW5050, .NET Framework 3.5/ 4.6 is required. If .NET Framework 3.5/ 4.6 is not installed in your PC, it will be automatically installed when installing this software. Internet connection is required to install .NET Framework 3.5/ 4.6.
- (2) Please access our website (www.kew-ltd.co.jp/en/) and go to “Download” and then “Software” and download “KEW Windows for KEW 5050” according to the instructions described on the page.
- (3) When download completes, click “KewWin5050vXXXInst_eng.exe” and click “Next”.
- (4) Read through and understand the License Agreement and click “ I accept...”, and then click“ Next”.



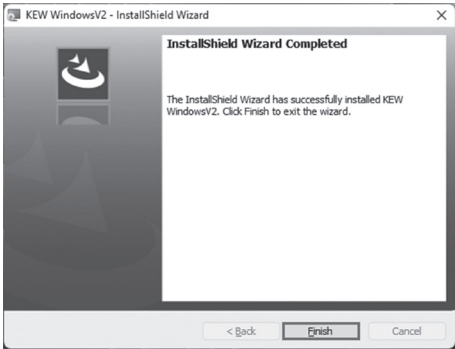
- (5) Click “Next” after entering the user information and other supplementary information, and click “Next”.

Ensure that internet connection is established, otherwise the installation of this software may be incomplete.

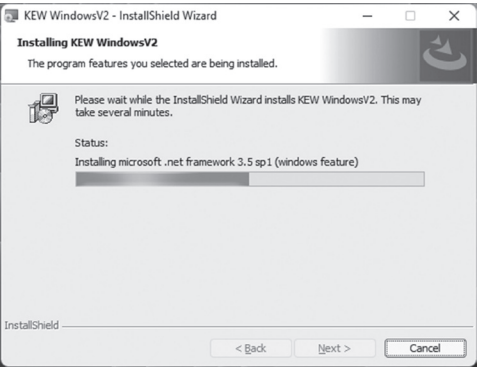
- (6) Confirm the information on installation, and then click “Install” to start installation.



- (7) Click “Finish” when “InstallShield Wizard Complete” dialog box appears.



The following box will appear if .NET Framework3.5 is not installed in your PC.



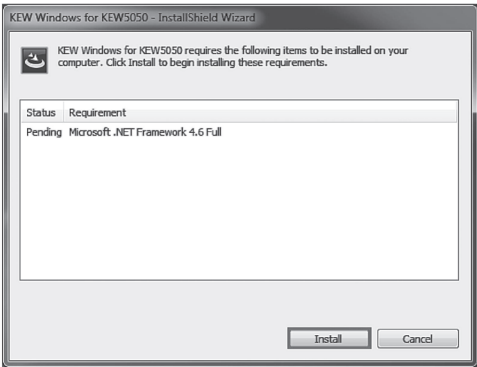
If a message requiring restarting your PC is displayed, click “Yes” and restart your PC.

- (8) When the installation wizard completes, installation of KEW Windows for KEW5050 initiates automatically.



- (9) Repeat above step (4) through (7) and complete the installation.

* The following box will appear if “.NET Framework 4.6” is not installed in your PC.



If a message requiring restarting your computer is displayed, click “Yes” and restart your computer. Installation process will then restart.

Restarting your computer is essential to install the software properly.

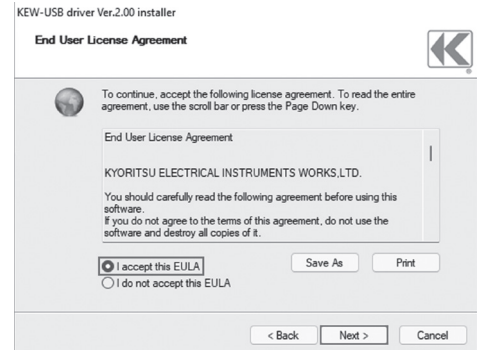
*** How to un-install the PC Software:**
Access to the “Control Panel” and double click on the “Programs and Features” to remove the “**KEW WindowsV2**” and “**KEW Windows for KEW5050**”.

3. Installing USB driver

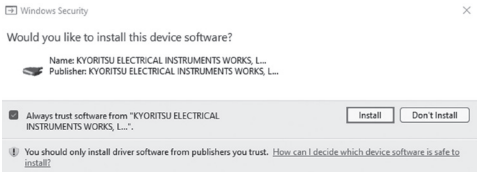
- (1)When KEW Windows for KEW5050 has been successfully installed in your computer, the following dialog box appears to start installing the USB driver. Click “Next”.



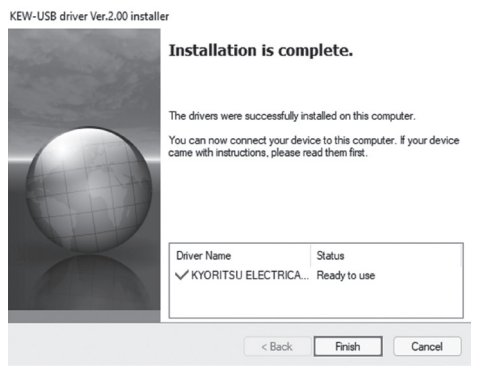
- (2) Read through and understand the End User License Agreement and click “I accept...”, and then click “Next”.



- (3) If the following Security Warning message appears, click “Install”.



- (4) Installation completes when the following window appears. Click “Finish”.

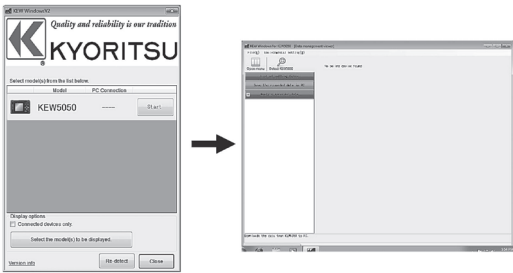


The USB driver has been successfully installed. Power on KEW5050 first, and then connect to you PC.

4. Starting “KEW Windows for KEW5050”

Click “**KEW WindowsV2**” icon on your desktop, or click “**Start**”->“**Program**”->“**KEW**”->“**KEW WindowsV2**”. Ensure that KEW5050 gets started before connecting KEW5050 to your PC. Then start “KEW WindowsV2”.

The main window for “KEW WindowsV2” appears. Select “KEW5050” and click “Start” or double click on “KEW5050” to get the KEW5050 started. Click “Close” or close button (x) on the right-top to end the program.



For further instructions, please read the instruction manual. Click (Double click) the desktop shortcut to “KEW Windows for KEW5050 MANUAL”.

MEMO



KYORITSU ELECTRICAL INSTRUMENTS WORKS, LTD.

2-5-20, Nakane, Meguro-ku,
Tokyo, 152-0031 Japan
Phone: +81-3-3723-0131
Fax: +81-3-3723-0152
Factory: Ehime, Japan

www.kew-ltd.co.jp