

KEW Windows for KEW2510

Quick Start Guide

Starting KEW Windows for KEW2510

[Next page](#)

Data Analysis

Analysis of data stored in KEW2510	P.6
Analysis of downloaded data	P.9
Data analysis	P.11

Data save to PC

Data import from KEW2510 internal memory to PC	P.18
--	------

KEW2510 Setting

Showing KEW2510 setting window on PC	P.21
Setting data readout from KEW2510	P.22
Reflecting edited setting data on KEW2510	P.23

Other Functions

Saving data in CSV format	P.24
Saving data in Excel format	P.25

Environmental Setting

Changing application settings	P.28
-------------------------------	------

Trouble-shooting

[P.29](#)

Starting KEW Windows for KEW2510

Environmental requirements

System requirements:

- CPU : Pentium 4 1.6GHz or more
- Memory : 1Gbyte or more
- OS : Please refer to version label on CD case about Windows os.
- HDD : 1Gbyte or more
(including size of .NET Framework redistributable package)
(Hard-disk space required)
- CD or DVD drive : For installing applications
- Display : 1024 x 768 dots, 65536 colors or more
- Version of Excel : Microsoft Excel 2007 or later

Recommended system:

Pentium processor of 2GHz or more

Starting KEW Windows for KEW2510

Without connecting PC and KEW2510:

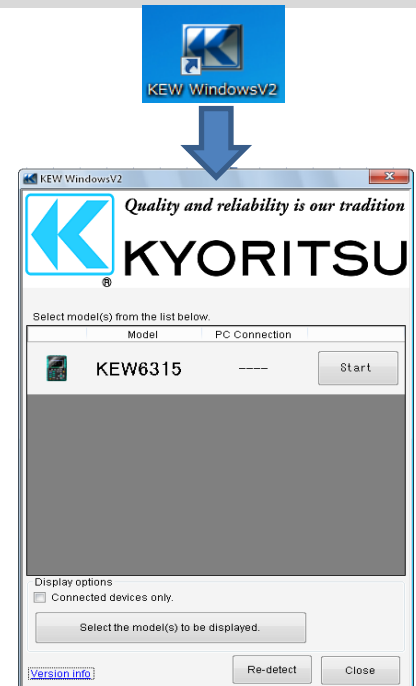
Can perform:

[Data Analysis (P.6)]

STEP 1

Start "KEW Windows".

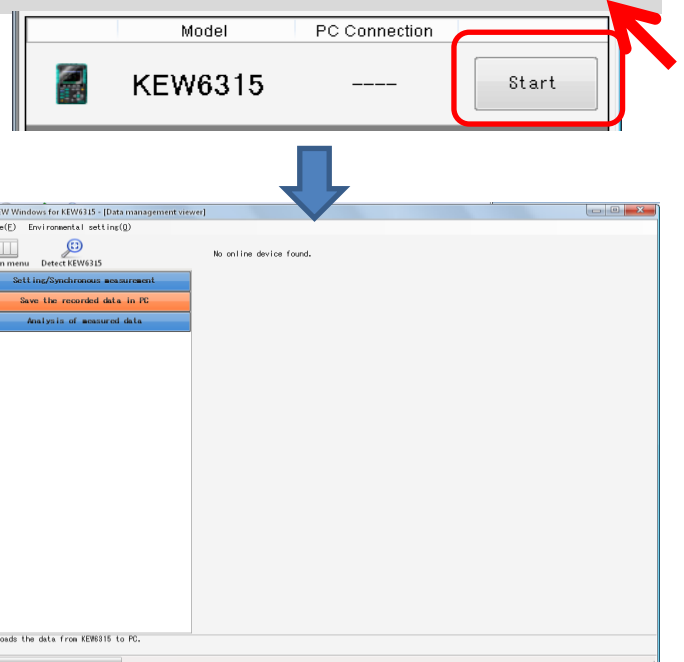
- 1 Double-click the short-cut icon on the desktop, or click "Start" -> "All programs" -> "KEW" -> "KEW WindowsV2".



STEP 2

Start "KEW Windows for KEW2510".

- 1 Click [Start] button for KEW2510.



Starting KEW Windows for KEW2510

With PC and KEW2510 connected:

Can perform the followings:

[Data Analysis (P.6)]

[Saving data to PC (P.38)]

[KEW2510 Setting (P.46)]

STEP 1

Connect KEW2510 and PC.

1 Power on KEW2510.

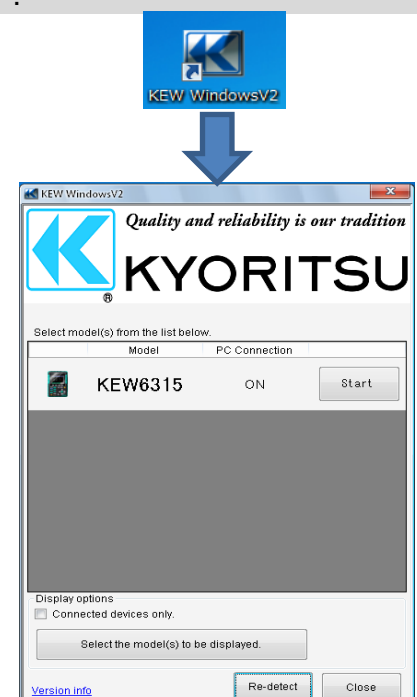


2 Connect KEW2510 and PC via Bluetooth.

STEP 2

Start "KEW Windows".

1 Double-click the short-cut icon on the desktop, or click "Start" -> "All programs" -> "KEW" -> "KEW WindowsV2".

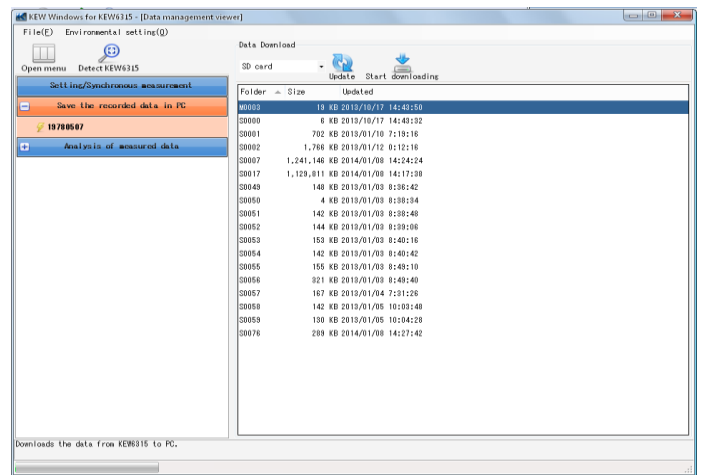
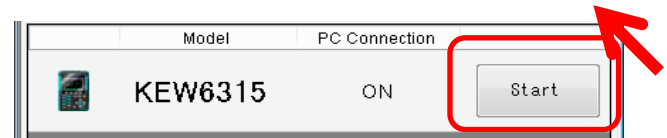


Starting KEW Windows for KEW2510

STEP 3

Start "KEW Windows for KEW2510".

- 1 Click [Start] button for KEW2510.



If "ON" is not displayed for the connected status although KEW2510 is being connected to PC, click [Re-detect].

If "ON" is still not displayed, see "Trouble-shooting".

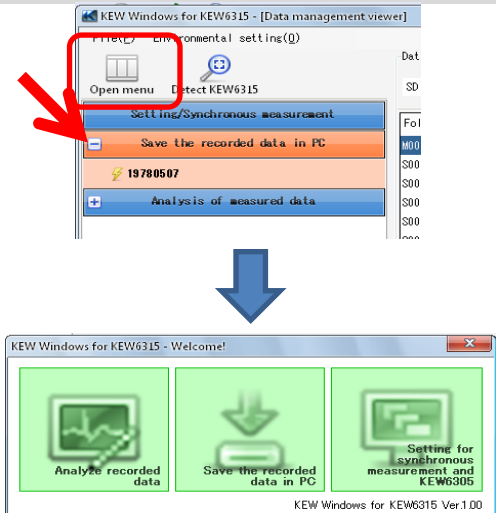
Data Analysis

Analysis of data stored in KEW2510

STEP 1

Open the Menu

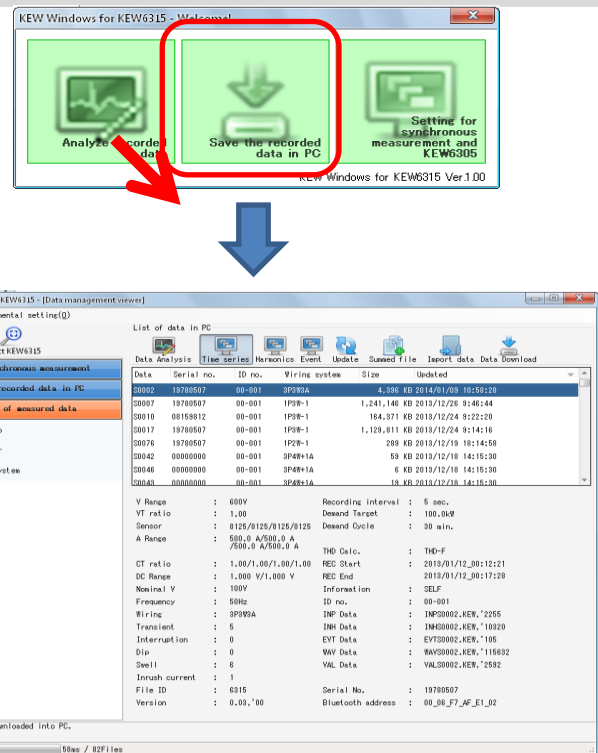
1 Click [Open menu] icon on "Data management viewer".



STEP 2

Show the list of data stored in PC

1 Click [Analyze recorded data] icon.

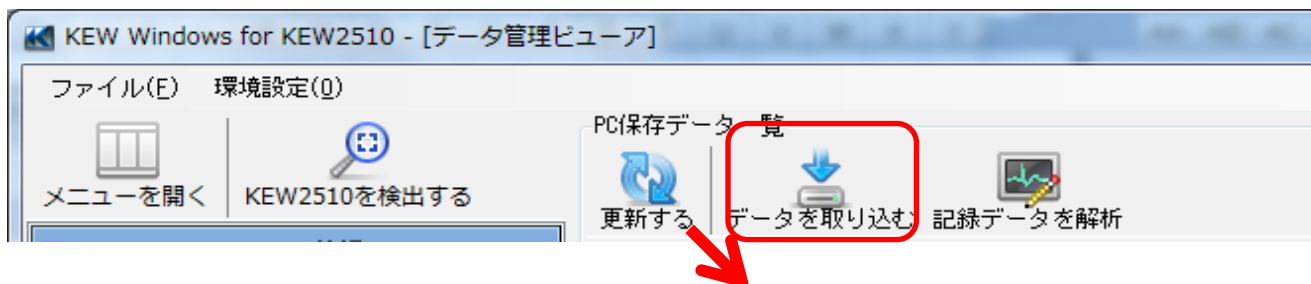


Data Analysis

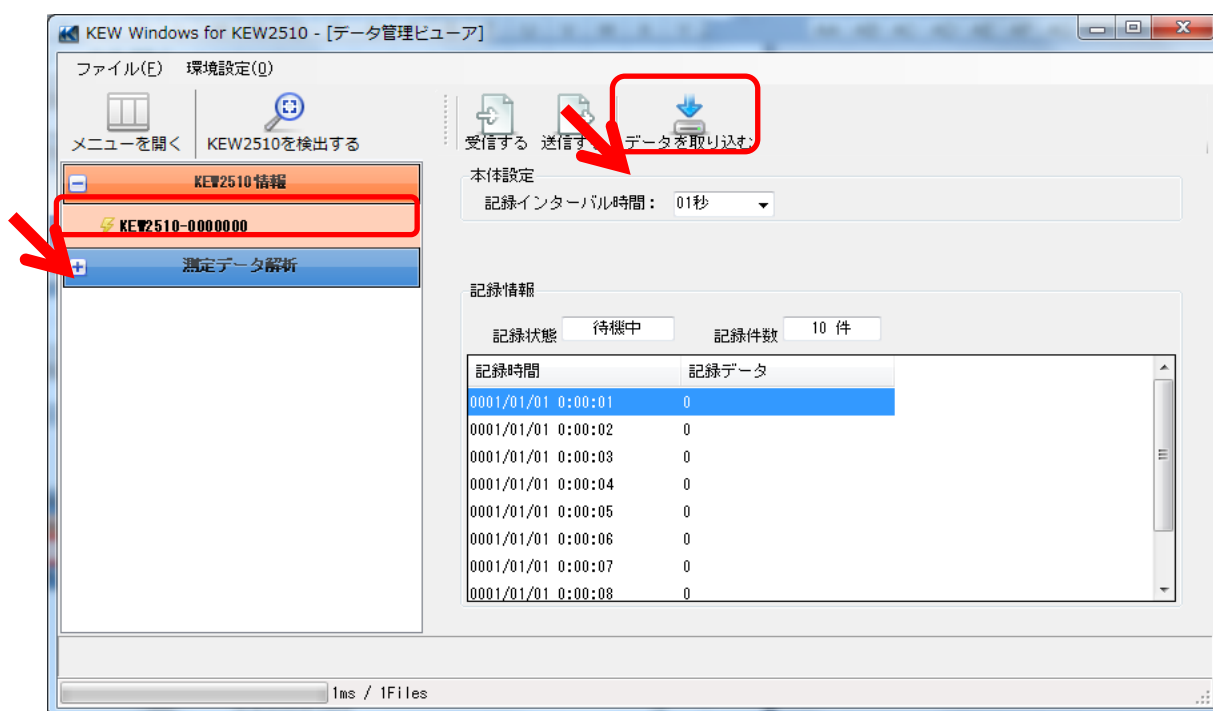
STEP 3

View the data stored in KEW2510

1 Click [Data Download] icon.

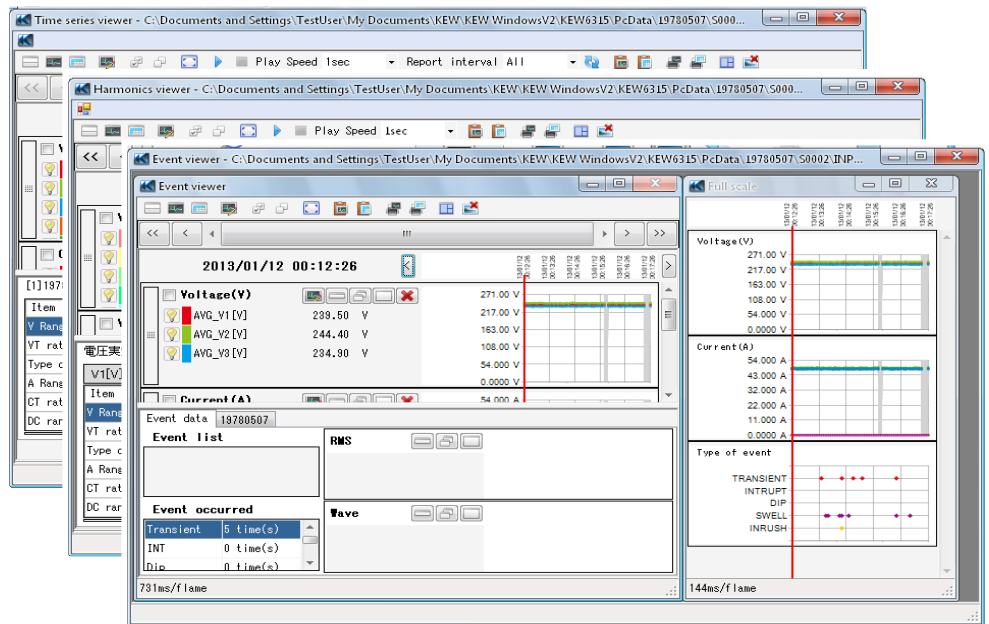
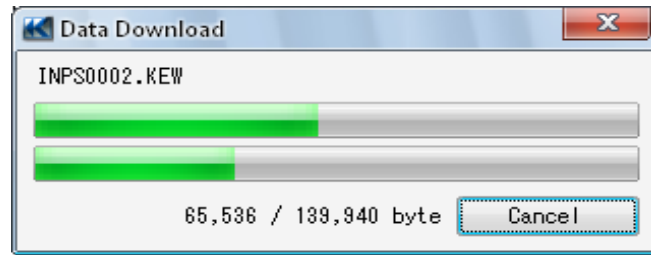


2 Click on the serial no of KEW2510 for analysis, and then click [Start downloading] icon.



Data Analysis

3 Data Analysis Window will appear when data download to PC completes.



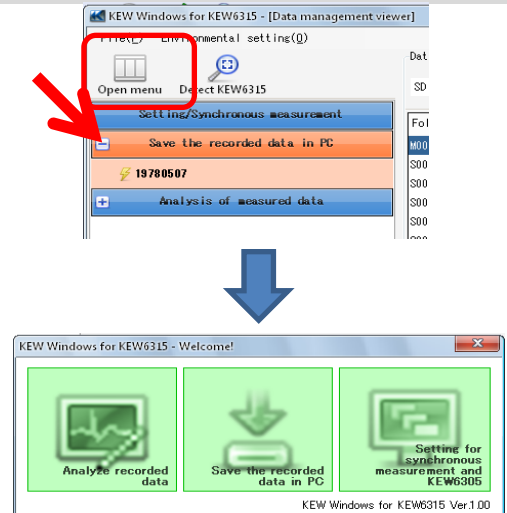
Data Analysis

Analysis of downloaded data

STEP 1

Open the Menu

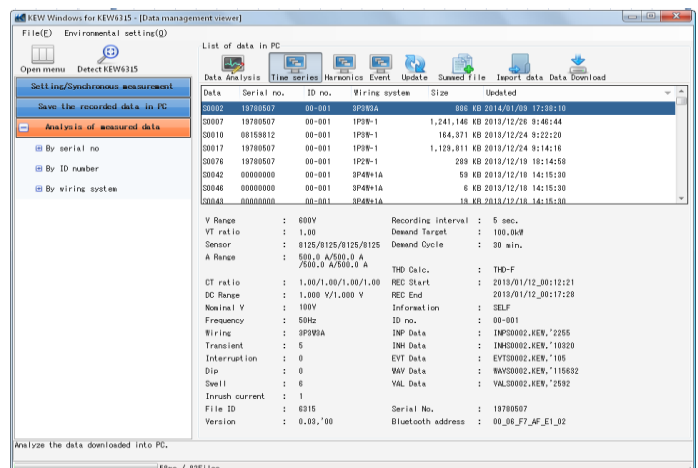
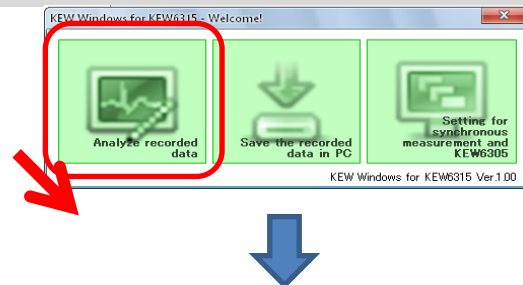
1 Click [Open menu] icon on "Data management viewer".



STEP 2

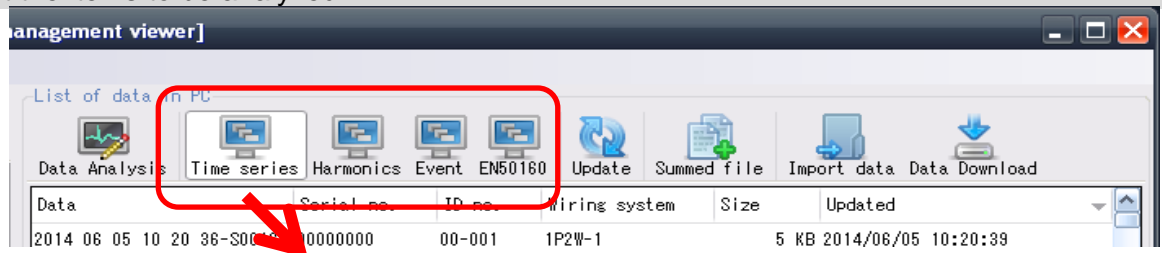
Show the list of data stored in PC

1 Click [Analyze recorded data] icon.

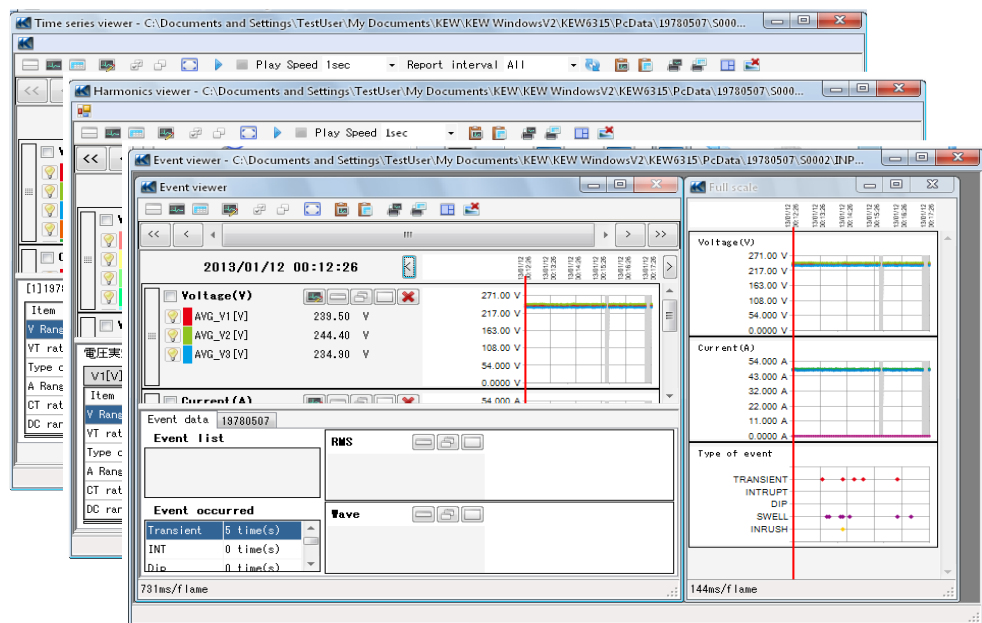
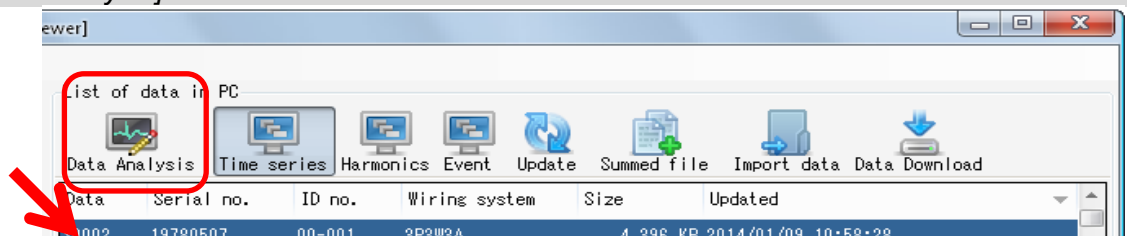


Data Analysis

2 Select the items to be analyzed.



3 Click [Data Analysis] icon.

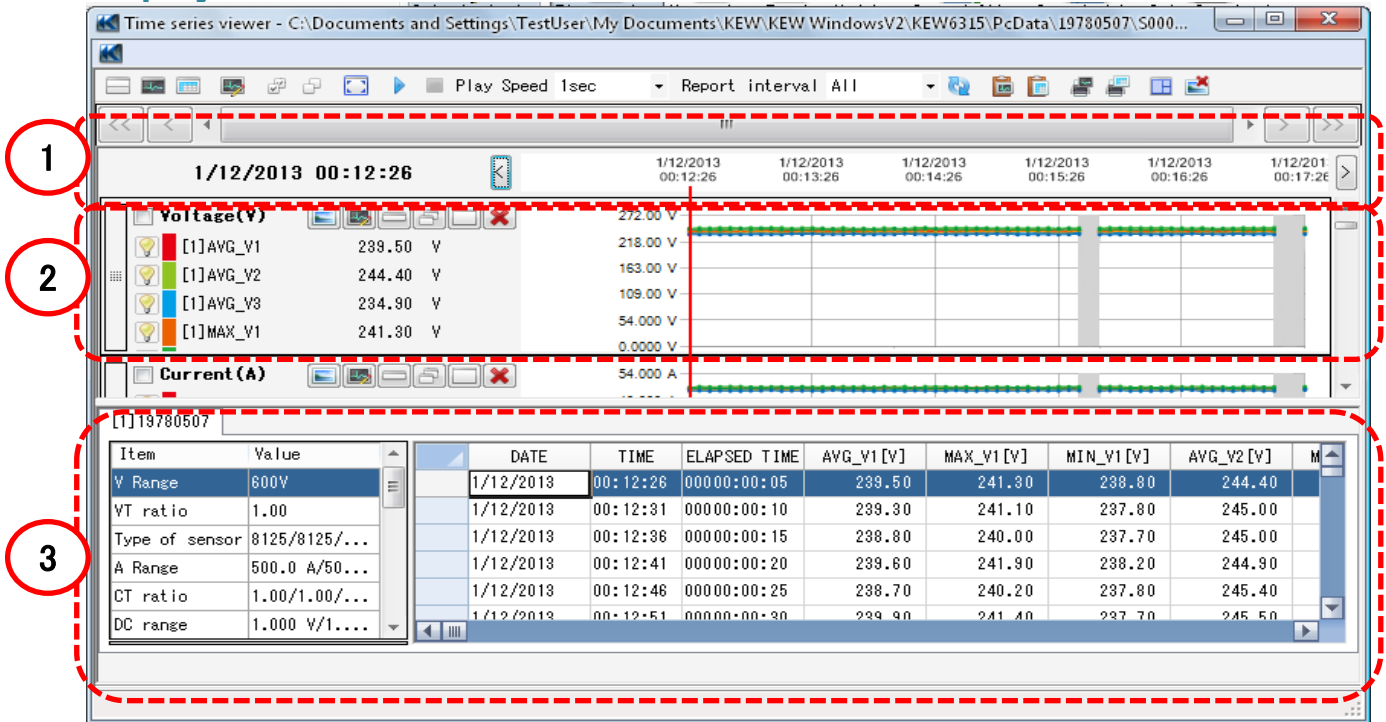


Data Analysis

Data Analysis

STEP 1

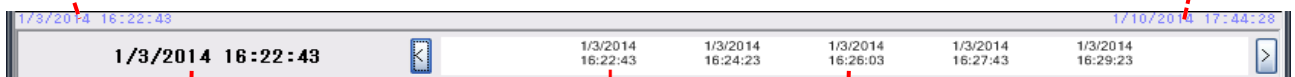
Displayed items



1 Data recorded time

Time when the oldest data recorded

Time when the latest data recorded



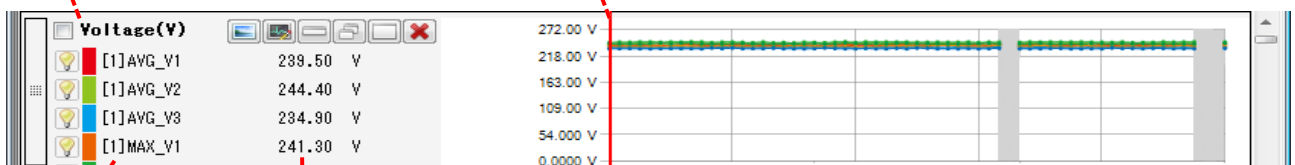
Time for the cursor location.

Time axis on the graph

2 Time Series Graph

Graph Name

Cursor



Parameter

Measured value axis
Values where cursor is located.

Data Analysis

3 Time Series List

Serial no of KEW2510

Item	Value	DATE	TIME	ELAPSED TIME	AVG_V1 [V]	MAX_V1 [V]	MIN_V1 [V]	AVG_V2 [V]	M
V Range	600V	1/12/2013	00:12:26	00000:00:05	239.50	241.30	238.80	244.40	
VT ratio	1.00	1/12/2013	00:12:31	00000:00:10	239.30	241.10	237.80	245.00	
Type of sensor	8125/8125/...	1/12/2013	00:12:36	00000:00:15	238.80	240.00	237.70	245.00	
A Range	500.0 A/50...	1/12/2013	00:12:41	00000:00:20	239.60	241.90	238.20	244.90	
CT ratio	1.00/1.00/...	1/12/2013	00:12:46	00000:00:25	238.70	240.20	237.80	245.40	
DC range	1.000 V/1....	1/12/2013	00:12:51	00000:00:30	239.90	241.40	237.70	245.50	

Measurement info

Time Series List

STEP 2

Functions

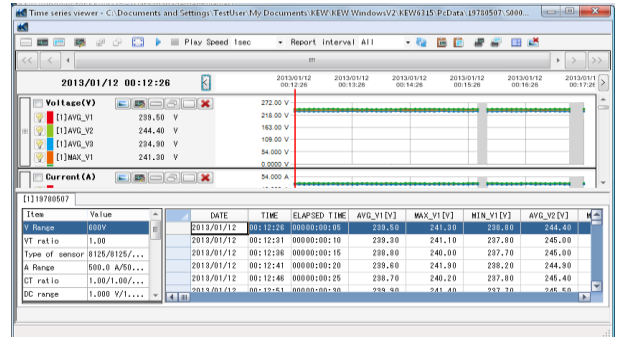
The screenshot shows the 'Time series viewer' application window. The interface includes a toolbar at the top with icons for file operations and playback controls. Below the toolbar is a navigation area with a date and time display (1/12/2013 00:12:26) and a grid of data points. The main area contains a graph with multiple data series (Voltage and Current) and a table at the bottom showing measurement data. Red dashed boxes and circles highlight specific features: 1-9 point to toolbar icons; 10 points to the navigation area; 11 points to the graph area; and 12 points to the data table.

Data Analysis

1 Changing the display layout.

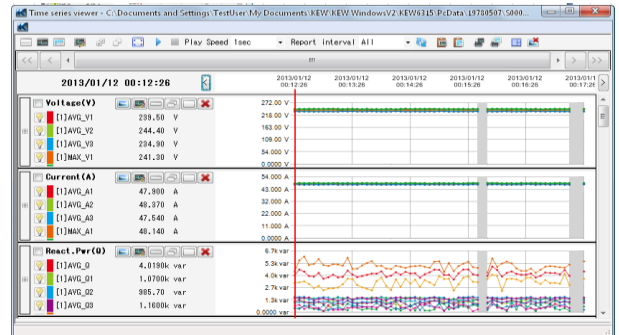
 To display graph and list on one screen at the same time:

Split the screen in two sections and display Time Series graph in the upper area and list data in the lower area.



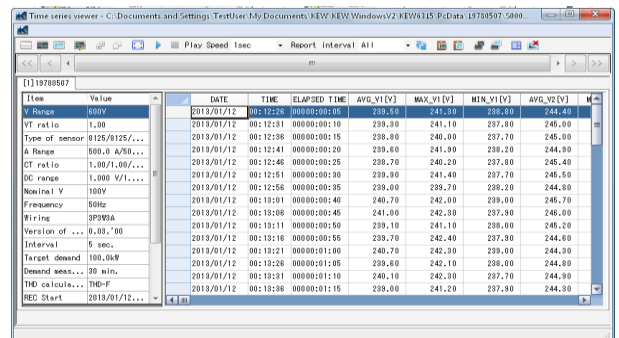
 To display graph only

Time Series graphs are arranged and displayed on one screen.



 To display list only

Show the list data on one screen.

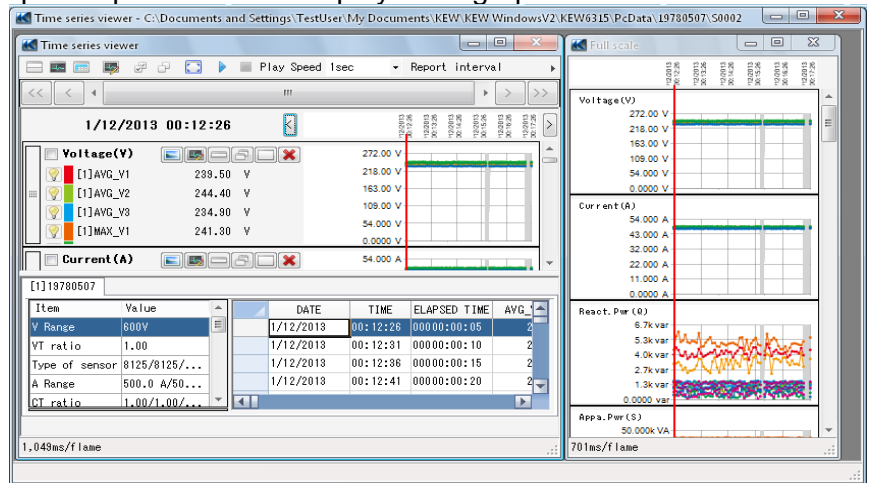


Data Analysis

2 Displaying graph in full-scale

 To display the selected graphs in full-scale.

All data recorded in the specific period can be displayed on graphs.



*Depending on the size of the recorded data, it may take a long time to create full-scale data.

3 Copying to clipboard

 To copy graph:

Copy all the displayed Time Series graphs to the clipboard as an image.

 To copy list:

Copy the selected list data to the clipboard with headers for each item as tab-delimited text data.

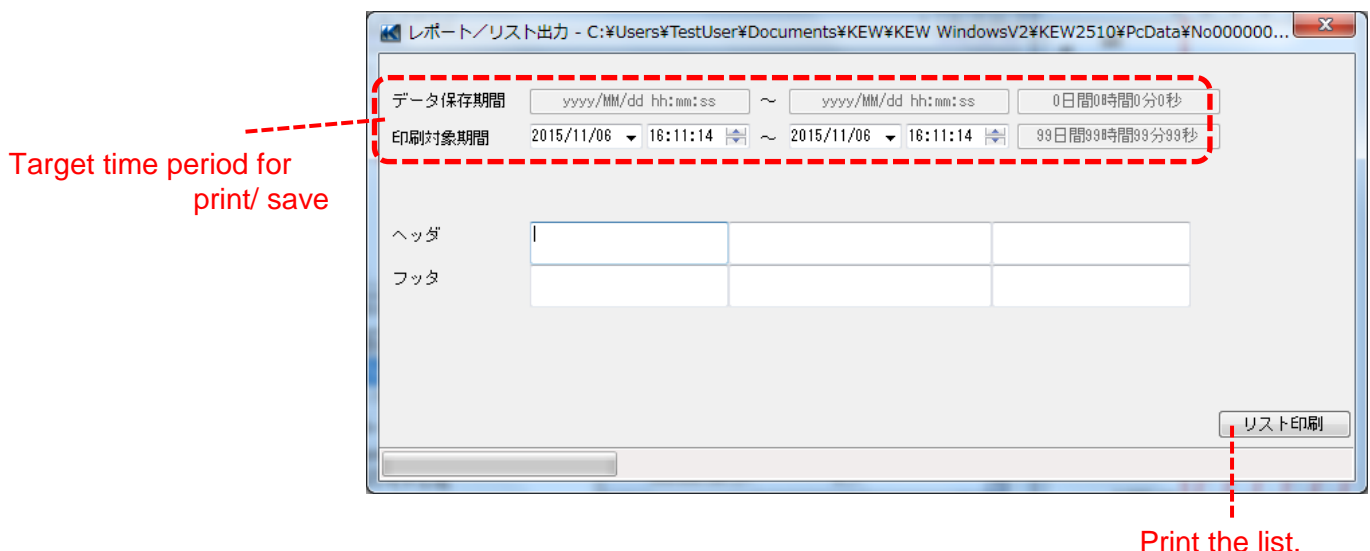
4 Printing

 To print graph:

Print all the displayed Time Series graphs.

 To print list:

Print the lists of the specified time period.

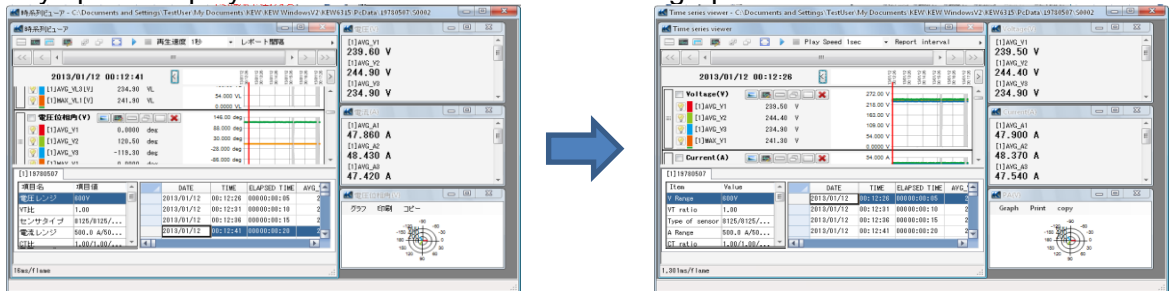


Data Analysis

5 Arranging sub-graphs

 To arrange the displayed sub-graphs:

Tidy up the displayed Time Series viewers and sub graphs.



6 Saving files

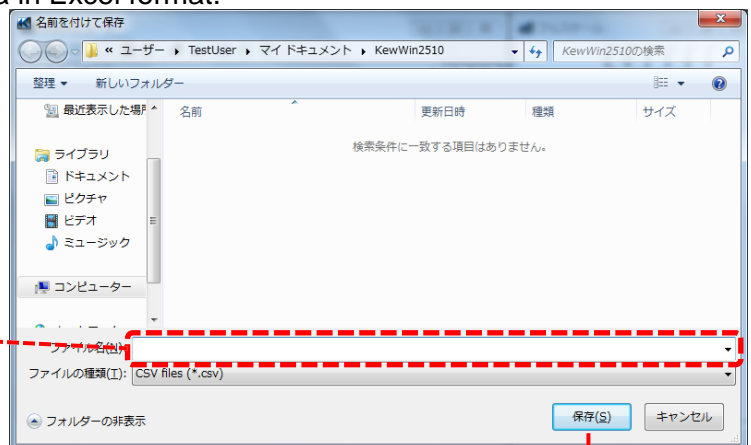
 To save CSV files

Save the currently displayed data in CSV format.

 To save Excel files

Save the currently displayed data in Excel format.

Name the file.



Save

Data Analysis

7 Scrolling graph

Slide the cursor to the right and left.

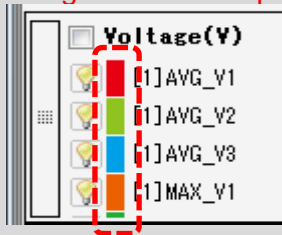


Scroll half of the screen.

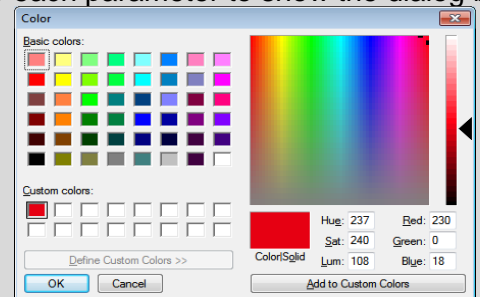
Scroll a quarter of the screen.

8 Changing the graph display format

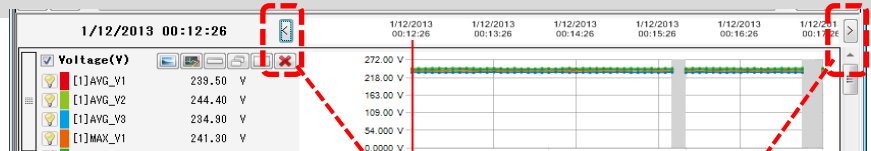
To change the color of parameter temporarily:



Click the colored boxes for each parameter to show the dialog box for color setting.



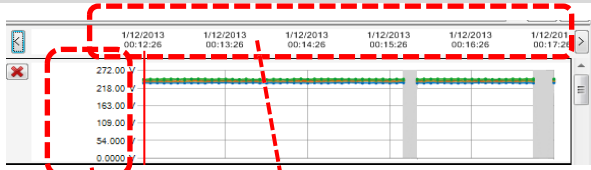
9 Moving cursor



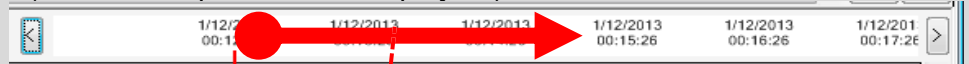
Move the cursor by one interval back and forth.

Data Analysis

10 Changing the graph display area

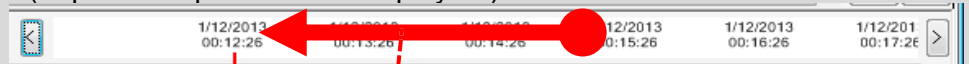


Enlarge the time axis
(Shorten the period to be displayed.)



Click and drag the tick to right.

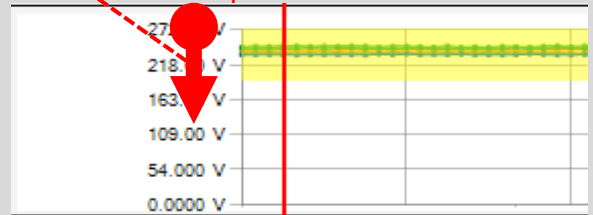
Shorten the time axis
(Expand the period to be displayed.)



Click and drag the tick to left.

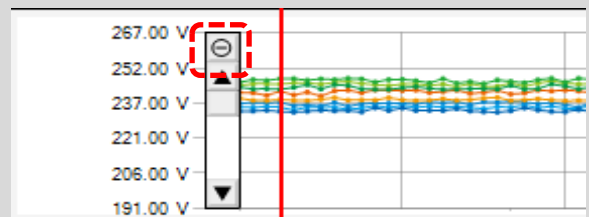
Enlarge the measured value axis

Click and drag the tick to down or up.



* The yellow area will be enlarged.

Restore the enlarged axis to the original scale.



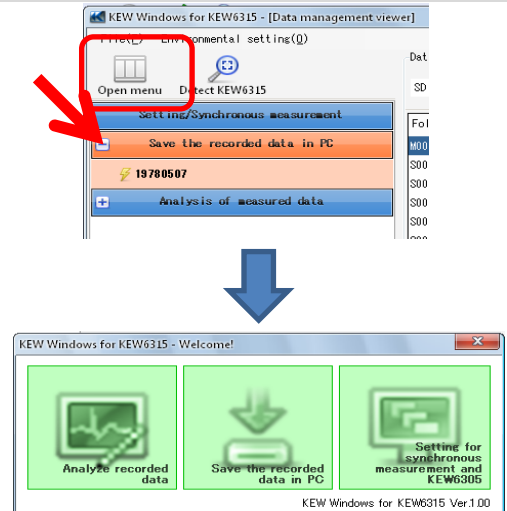
Data save to PC

Data import from KEW2510 internal memory to PC

STEP 1

Open the Menu

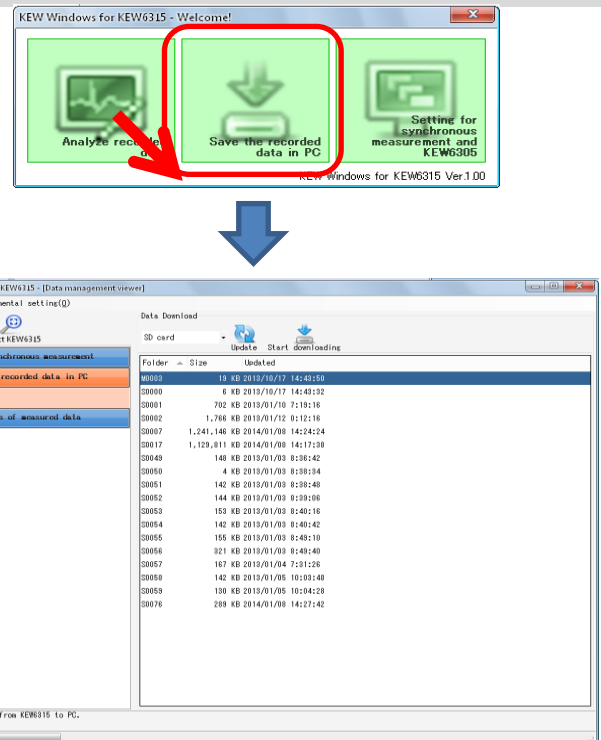
1 Click [Open menu] icon on "Data management viewer".



STEP 2

Show the list of data stored in the internal memory.

1 Click [KEW2510 Info] icon.

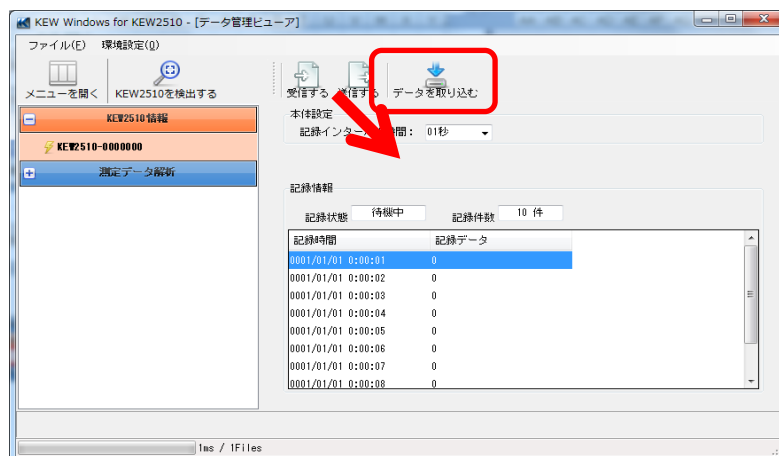


Data save to PC

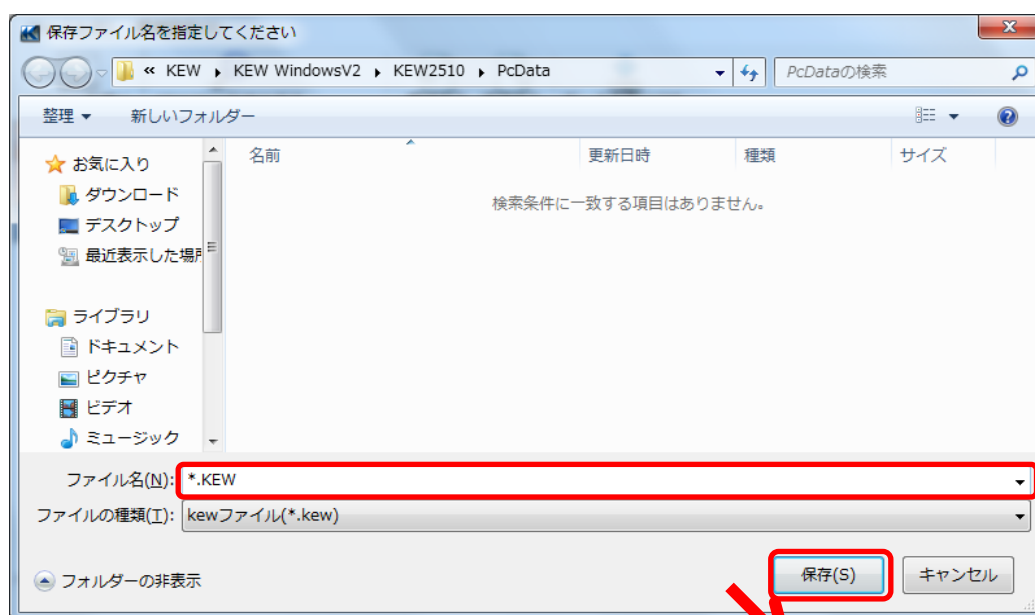
STEP 3

Save the recorded data to PC.

- 1 Select the data you want to save to PC, and click [Start downloading].

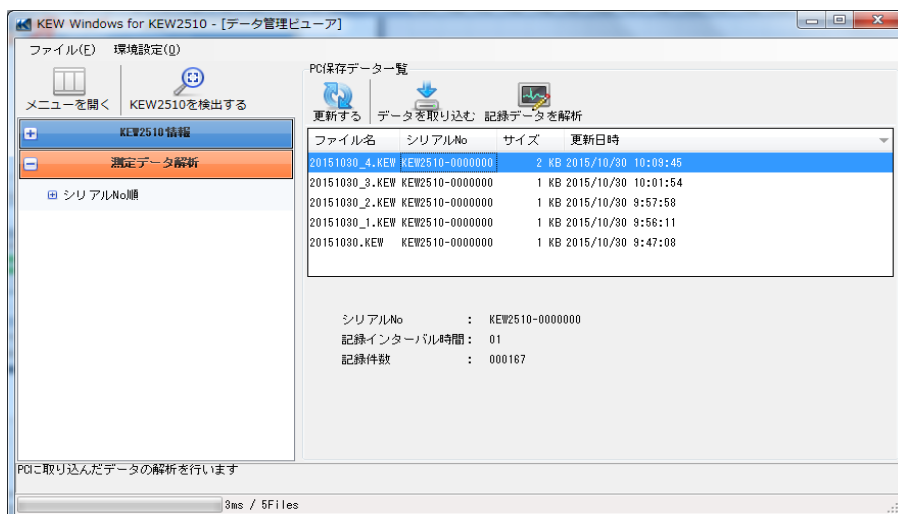
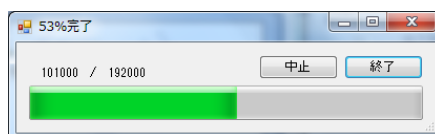


- 2 Name the file and click [Save].



Data save to PC

3 A list of saved files will be displayed when data download completes.



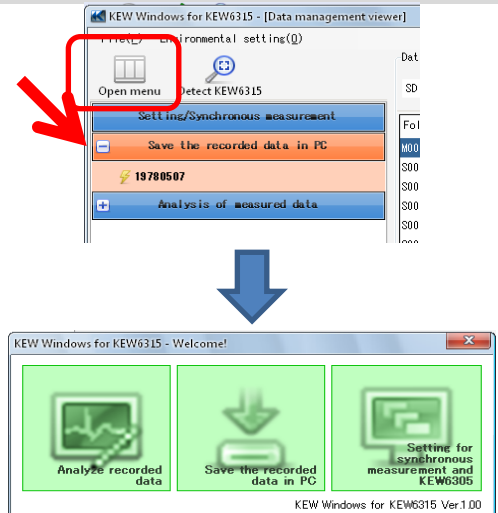
KEW2510 Setting

Showing KEW2510 setting window on PC

STEP 1

Open the Menu

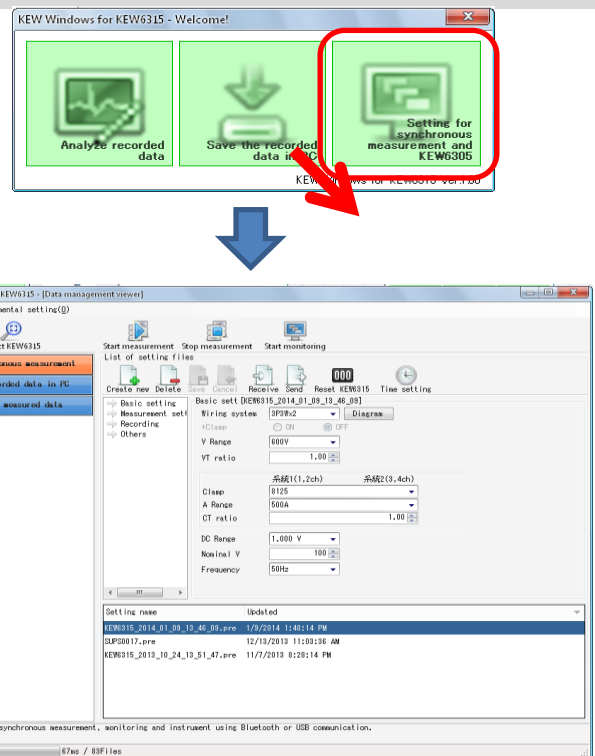
- 1 Click [Open menu] icon on "Data management viewer".



STEP 2

Show the KEW2510 settings.

- 1 Click [KEW2510 Info] icon.



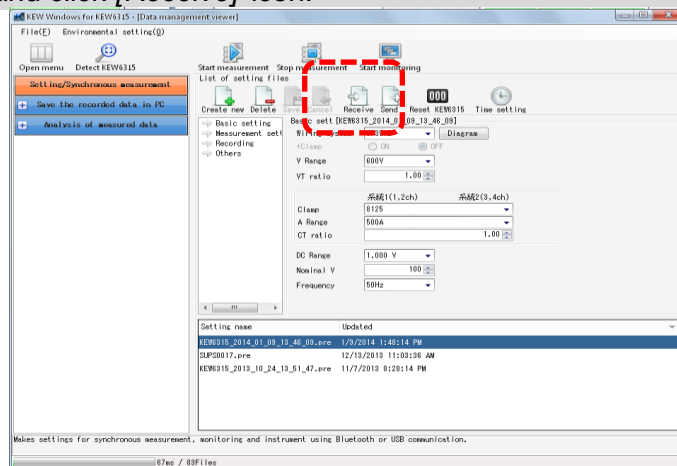
KEW2510 Setting

Setting data readout from KEW2510

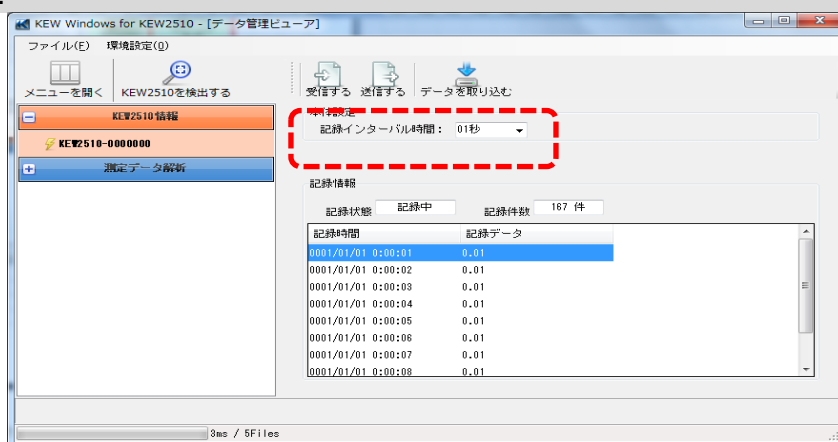
STEP 1

Readout the Setting data from KEW2510.

- 1 Select the serial no. of target KEW2510, and click *[Receive]* icon.



- 2 Setting data will be displayed.



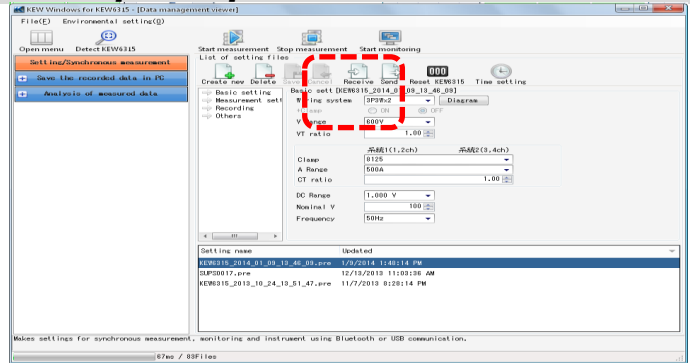
KEW2510 Setting

Reflecting edited setting data on KEW2510

STEP 1

Edit setting data of KEW2510.

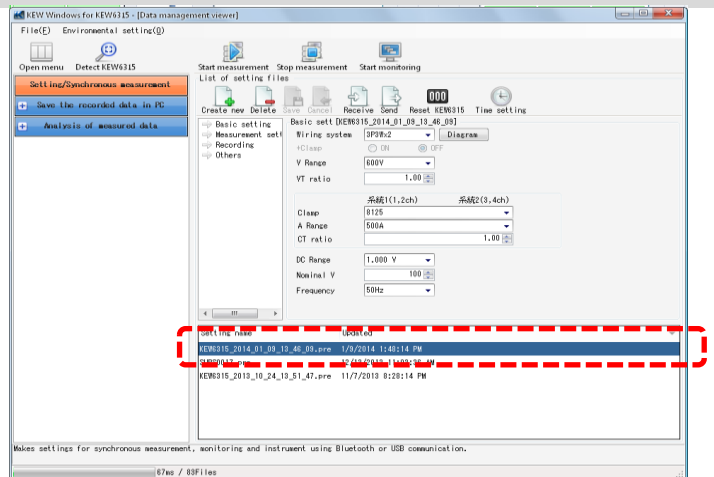
- 1 Select the serial no. of target KEW2510, and click [Receive] icon.



STEP 2

Reflect the edited setting to KEW2510.

- 1 Edit settings, and then click [Send] icon.



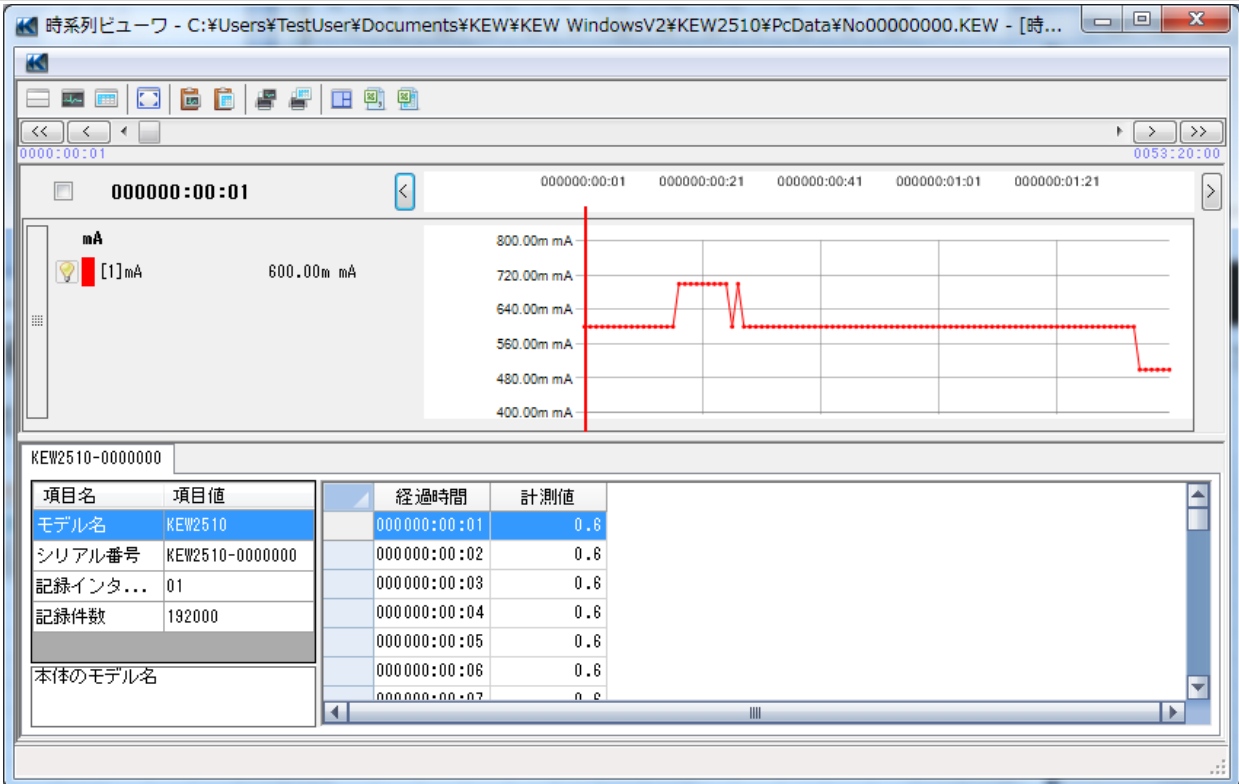
Other Functions

Saving data in CSV format

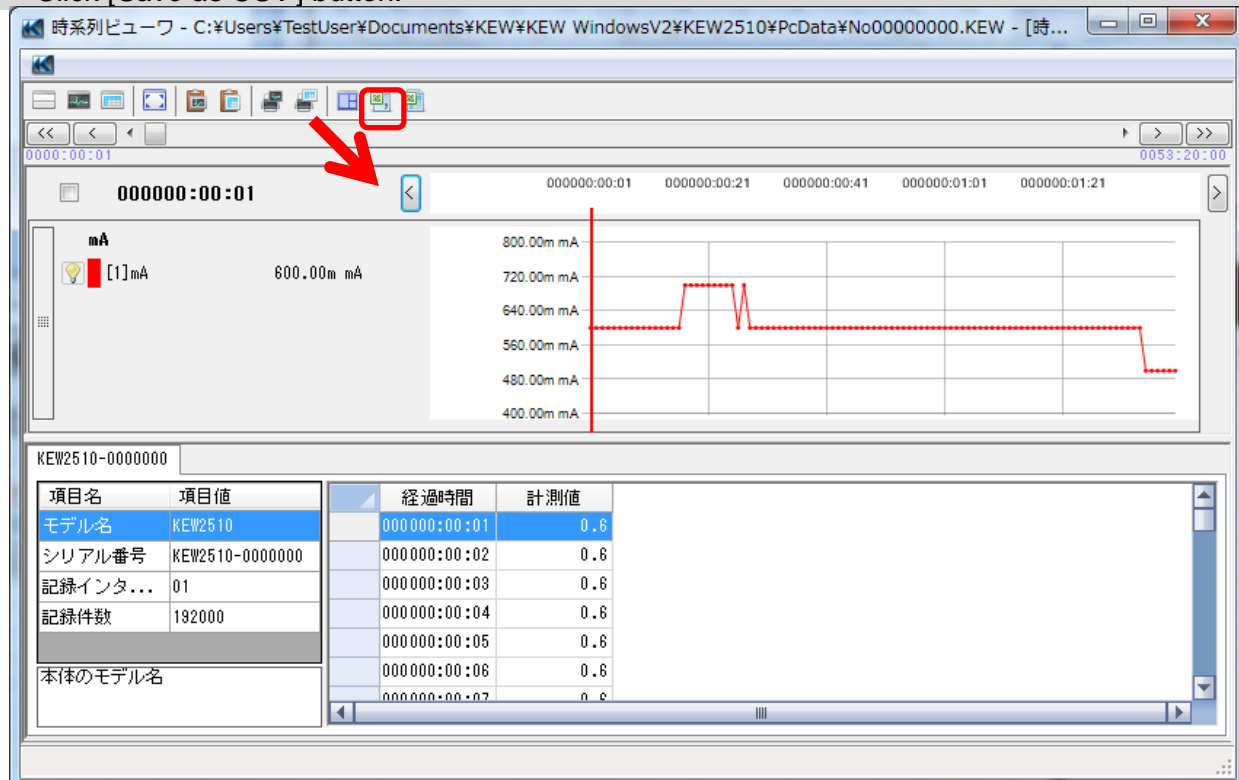
STEP 1

Opening Time series viewer window

1 Open Time series viewer window.



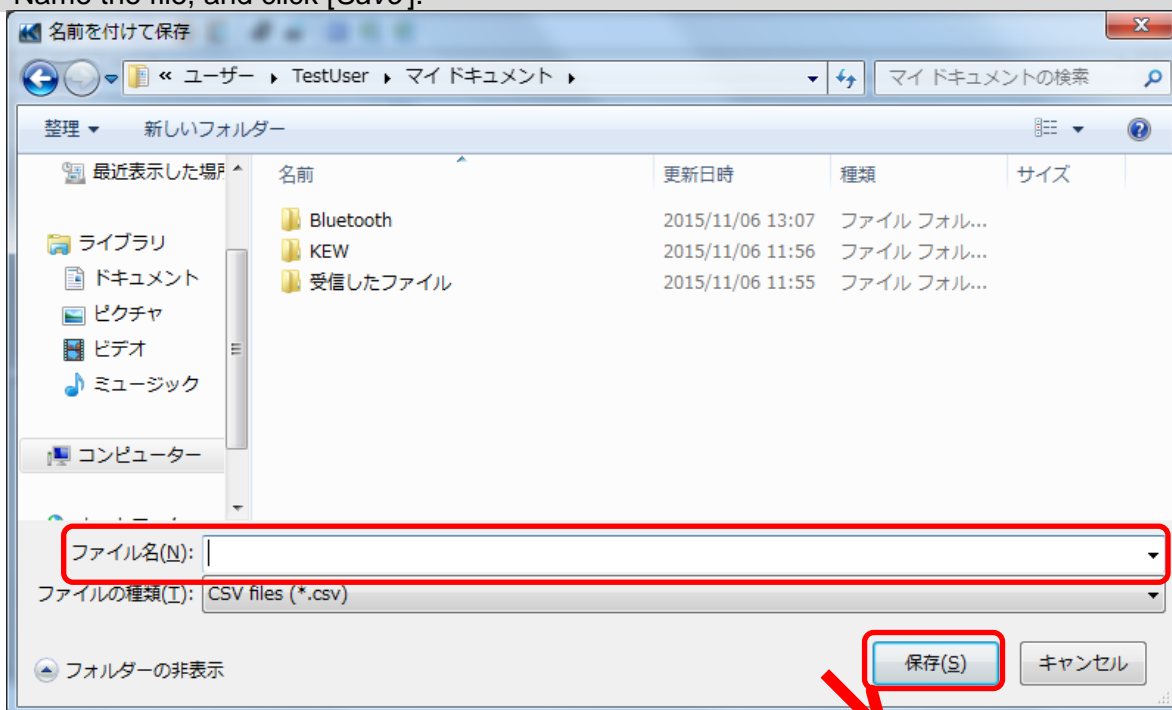
2 Click [Save as CSV] button.



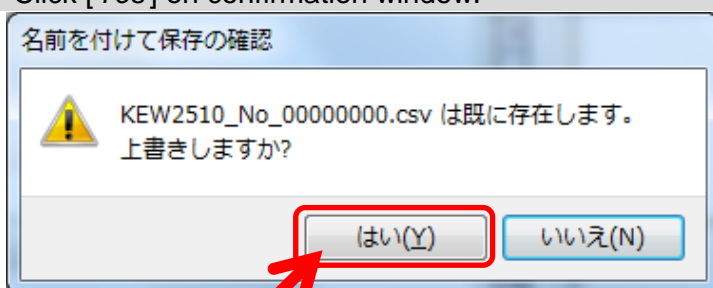
Other Functions

Saving data in CSV format

3 Name the file, and click [Save].



4 Click [Yes] on confirmation window.



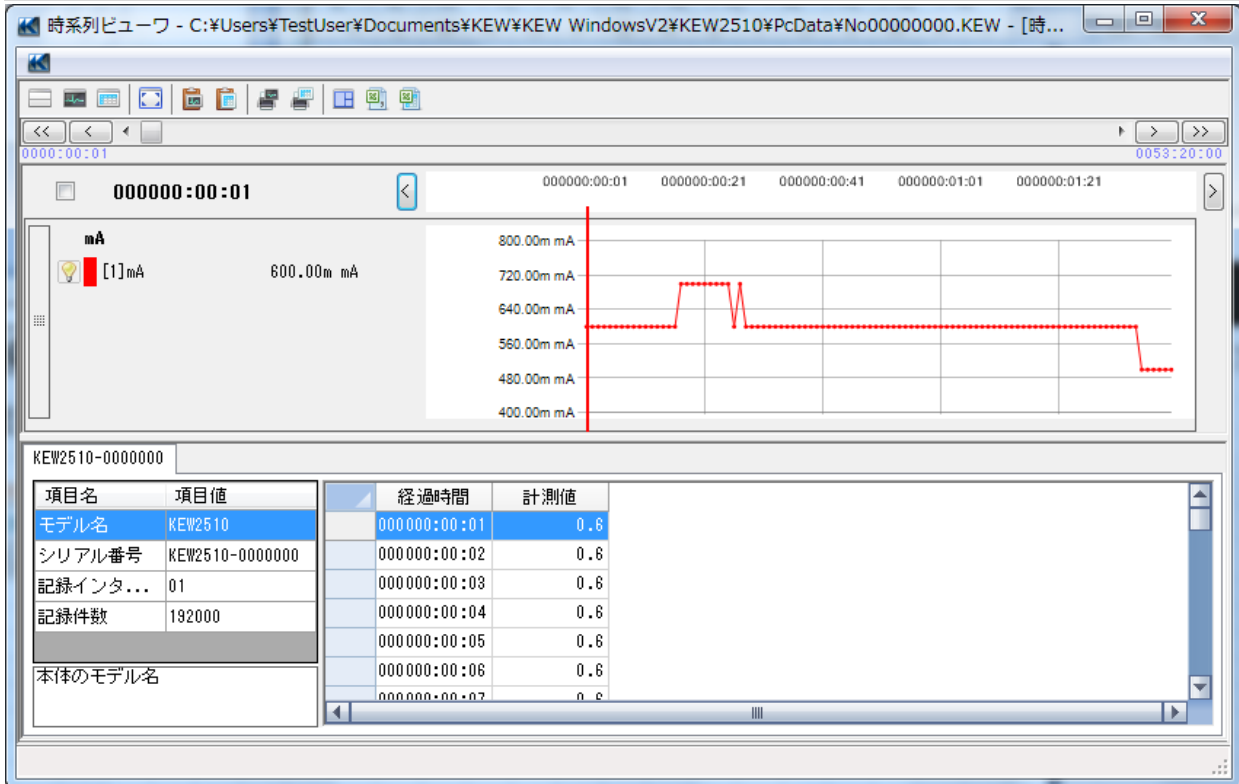
Other Functions

Saving data in Excel format

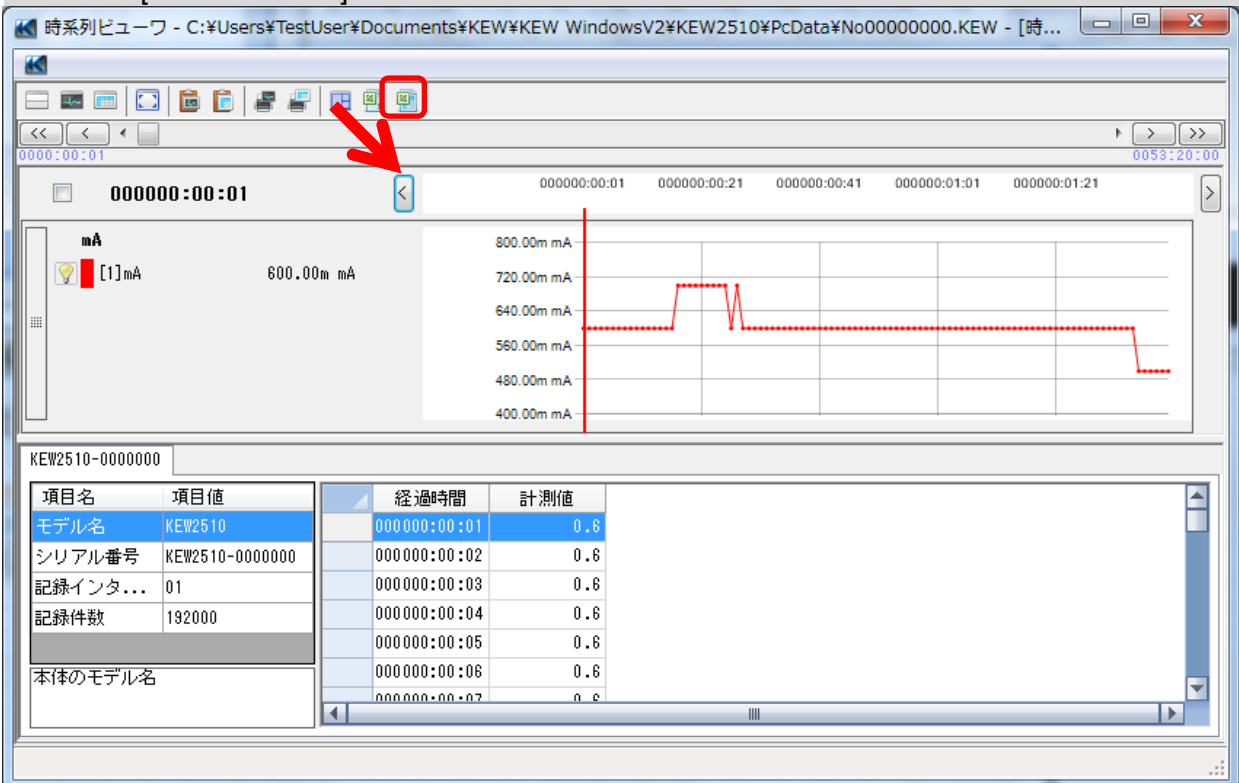
STEP 1

Opening Time series viewer window

1 Open Time series viewer window.



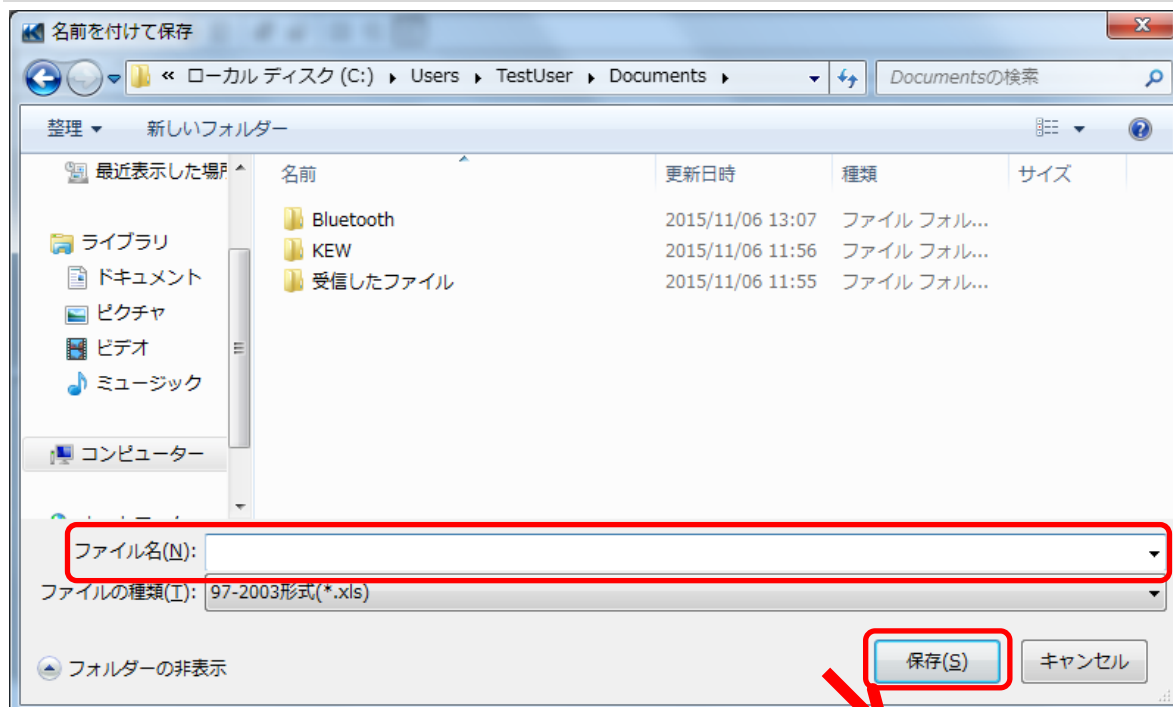
2 Click [Save as Excel] button.



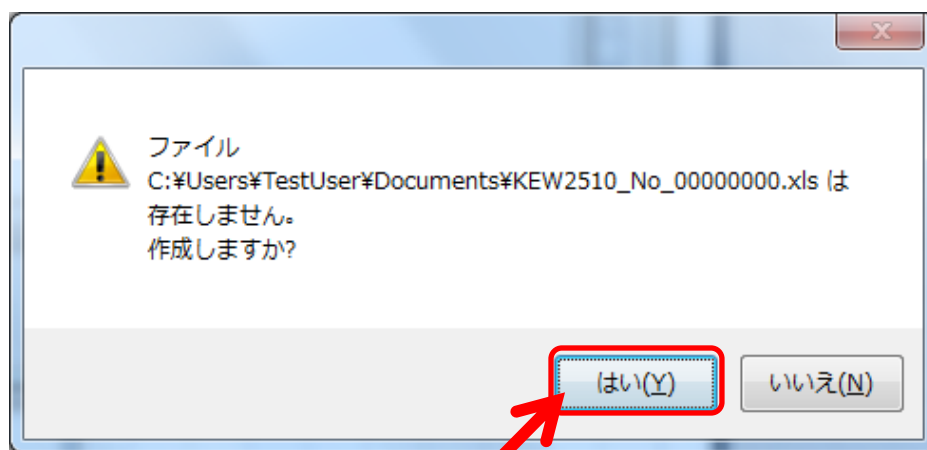
Other Functions

Saving data in Excel format

3 Name the file, and click [Save].



4 Click [Yes] on confirmation window.



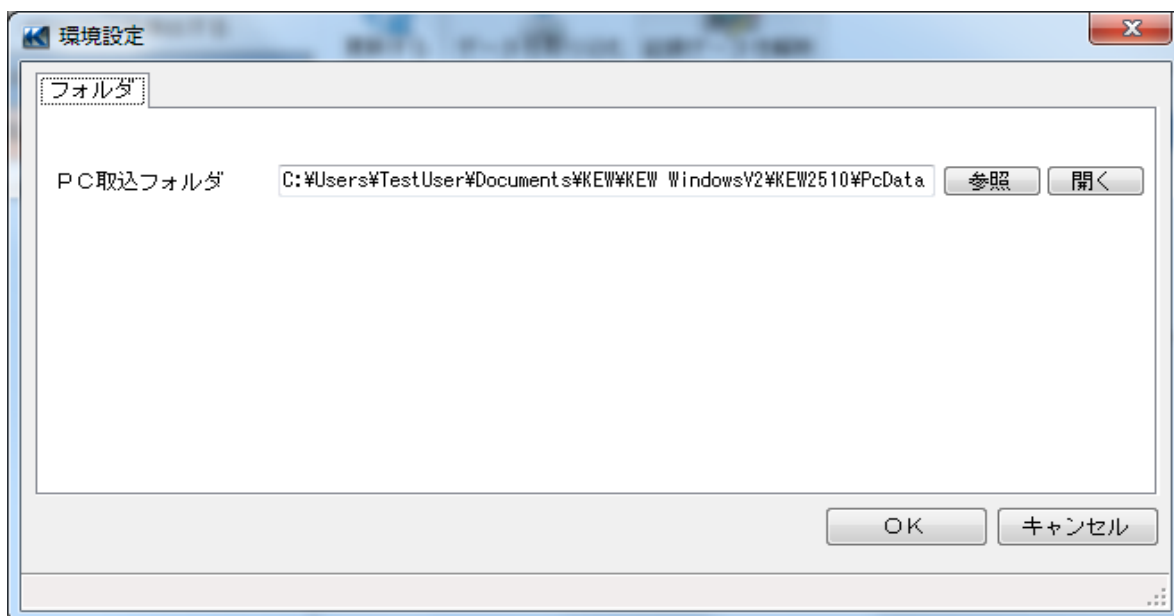
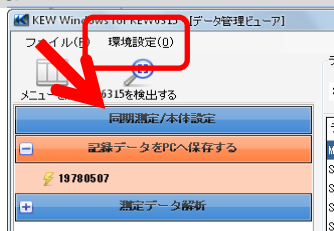
Environmental Setting

Changing the Operation setting for *KEW Windows for KEW2510*

STEP 1

Show the Environmental setting change screen.

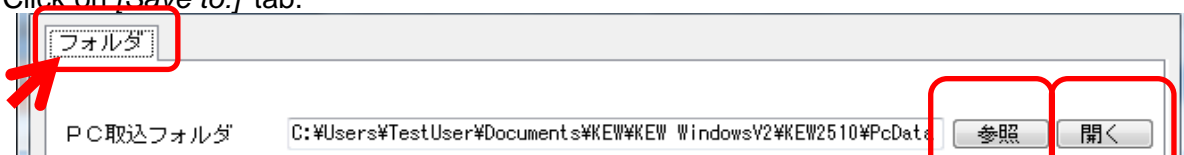
- 1 Click [Environmental Setting] on Menu bar.



STEP 2

Change the Environmental settings.

- 1 Change the destination to save each data.
Click on [Save to:] tab.



Downloaded data: ...Destination to save the data downloaded from KEW2510 to PC

Specify the folder to save the data.
Open explorer and go to the folder to save the data.

Trouble-shooting

* **KEW2510 and PC are connected via Bluetooth, but KEW2510 is not displayed on the list of connected device.**

Check if KEW2510 and your PC have been paired or not.

For the detailed pairing procedures, please refer to the manual of your Bluetooth device, or "Bluetooth pairing manual.pdf" which can be accessed from Start menu-> All programs -> KEW.

* **KEW2510 and PC are connected via Bluetooth, but communication fails.**

If communication such as data download and instrument settings fails, while connecting them via Bluetooth, power off KEW2510 and then power on it again.

Then click "**Detect KEW2510**".

Confirm that the serial no. of the connected KEW2510 is displayed under "**Data download**".

* **Downloading time**

Downloading time will be longer when file size becomes bigger.

Bluetooth transfer rate : approx. 15 min. for transferring 192,000 files