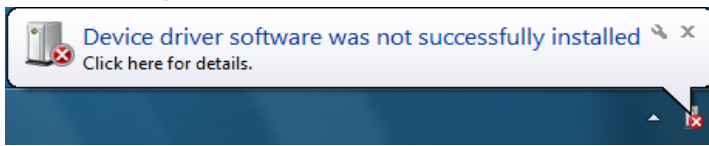


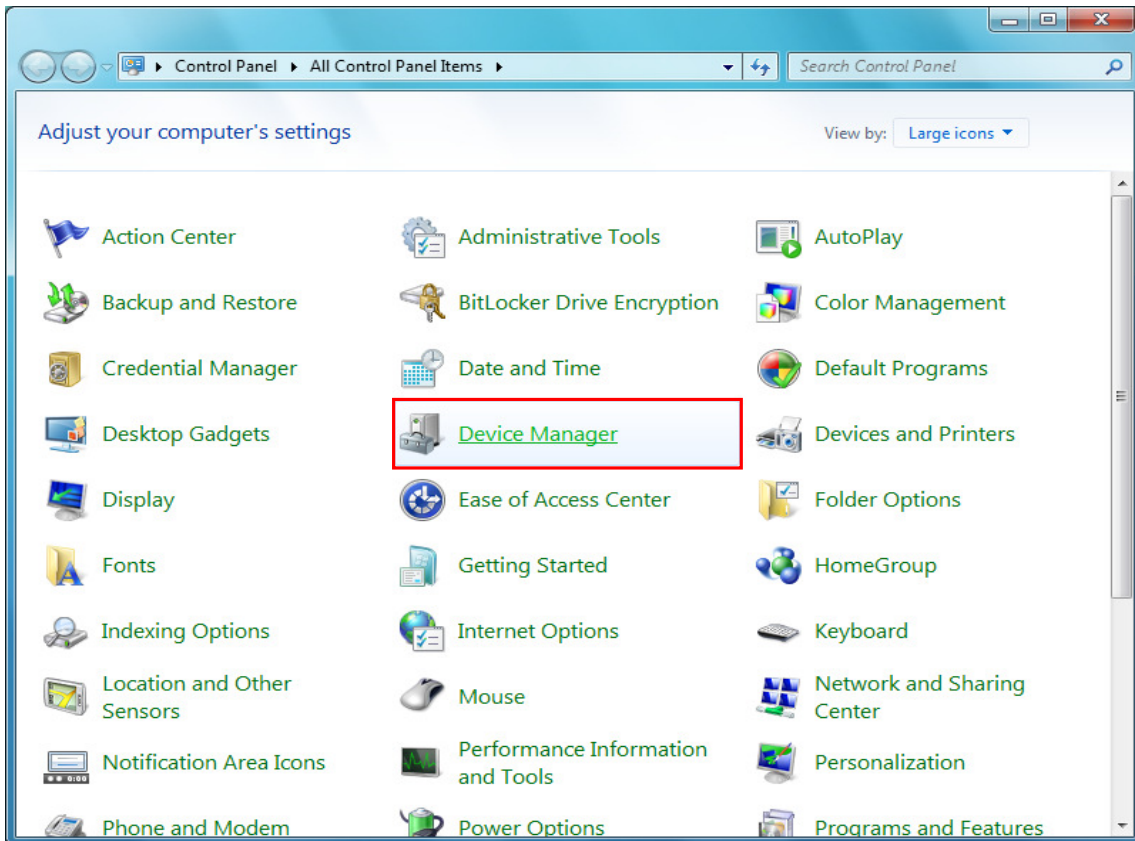
USB Driver Installation

This manual contains instructions how to install "MODEL 8241".

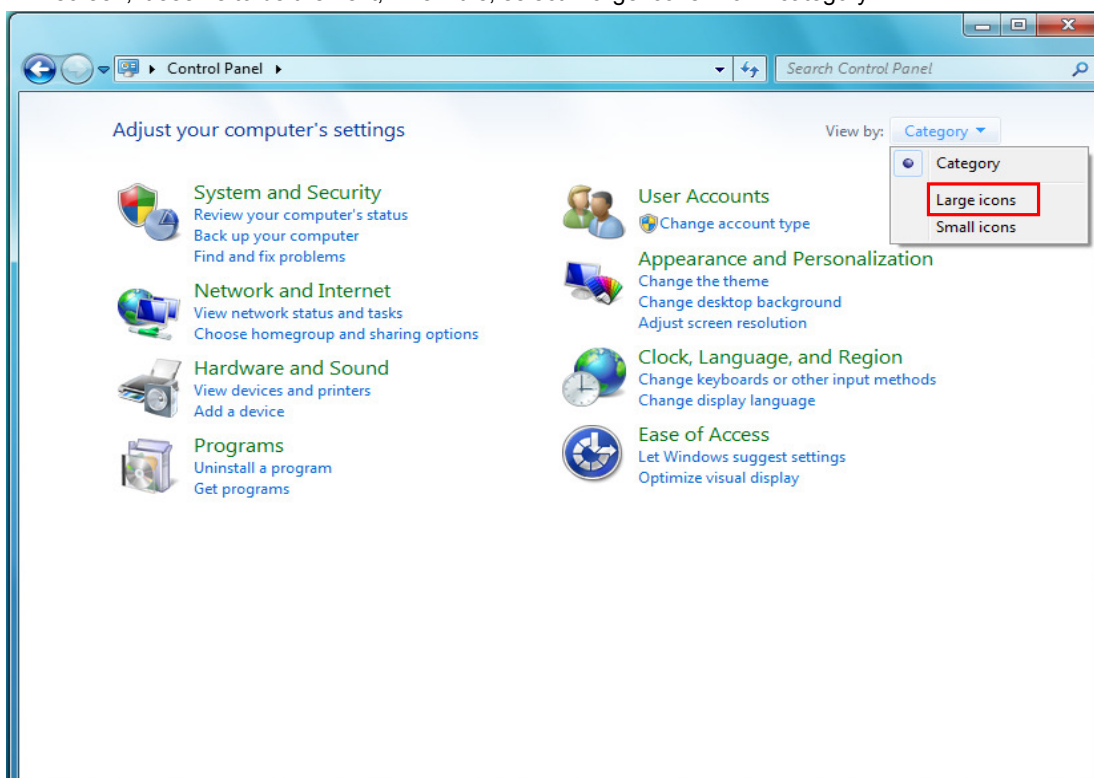
When connecting a product and a PC, when a balloon shown below appears, please install by the following procedure.



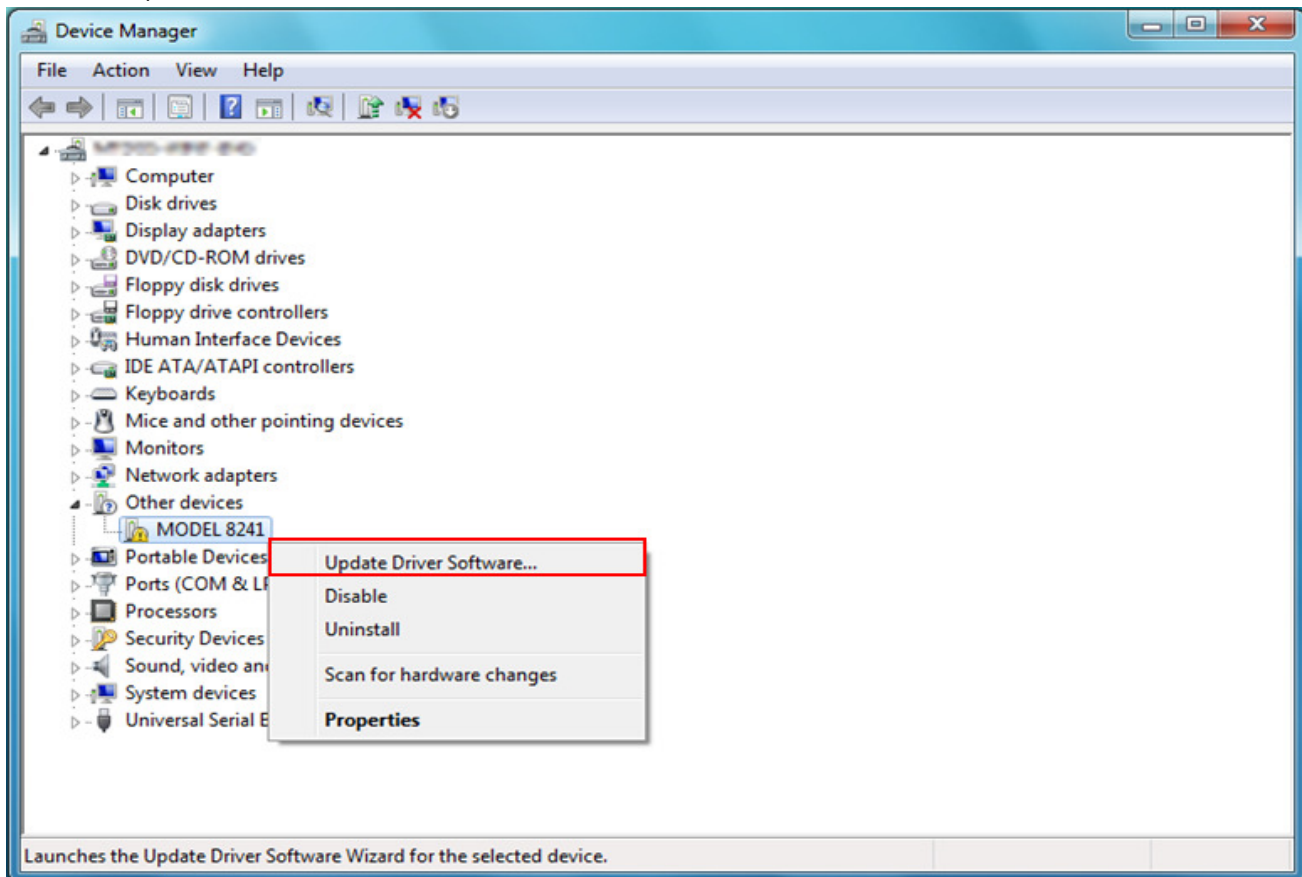
(1) Select "Start menu"-> "Control Panel" -> "Device Manager".



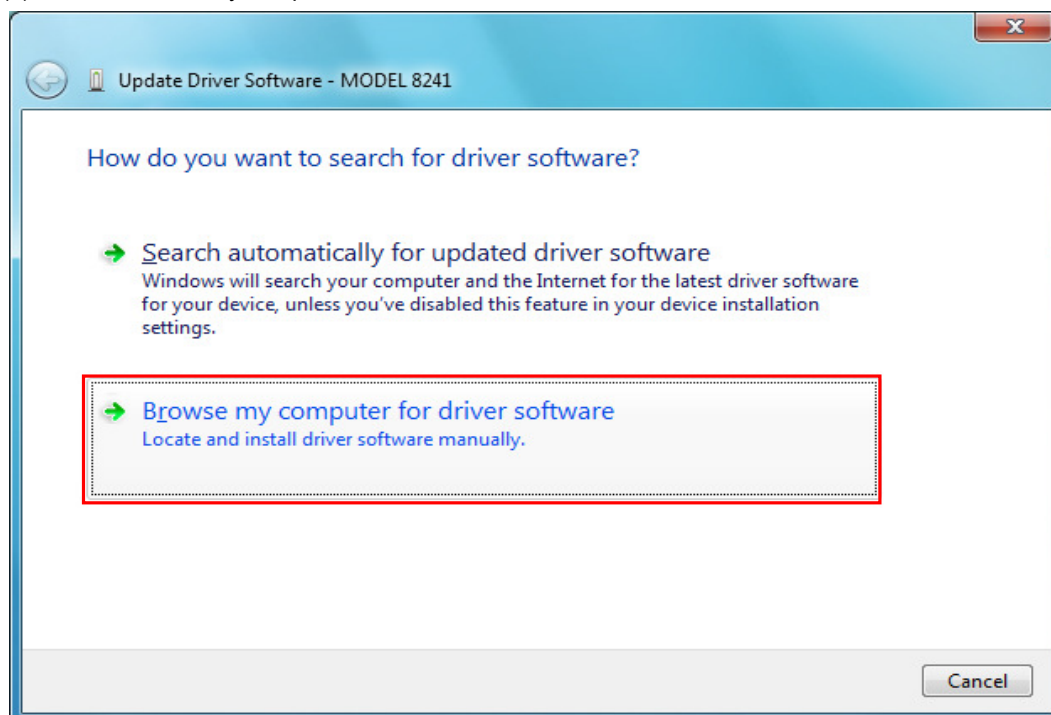
*A screen, it seems to be the next, when it is, select "Large icons" from "category".



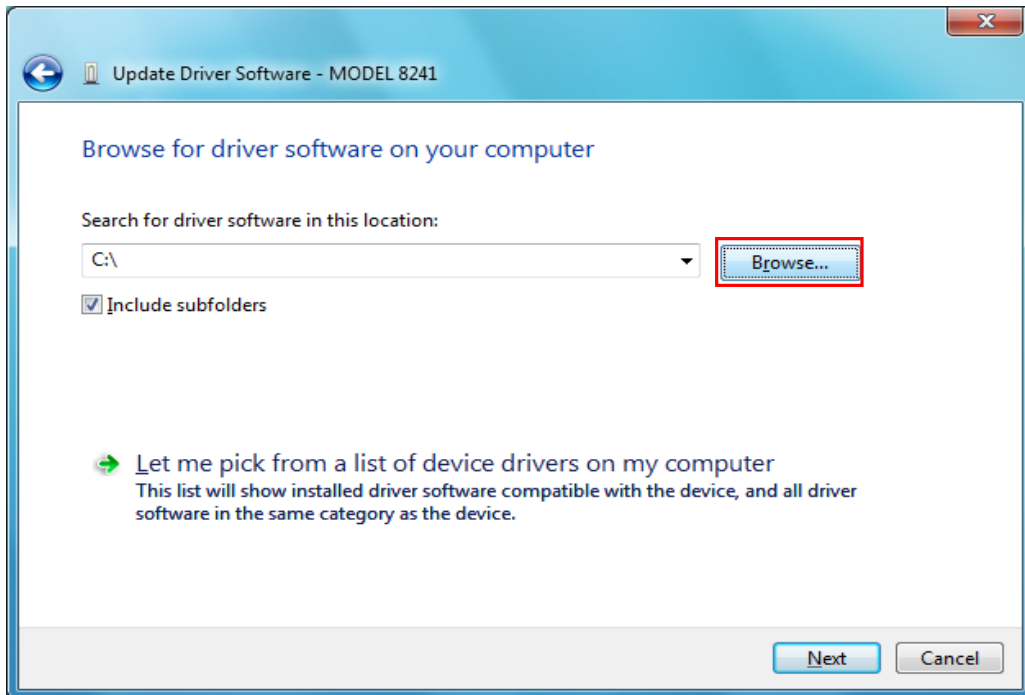
- (2) Right click on "MODEL 8241" in the "Other devices" from "Device Manager" and select. Select "Update Driver Software..." from the inside of the item.



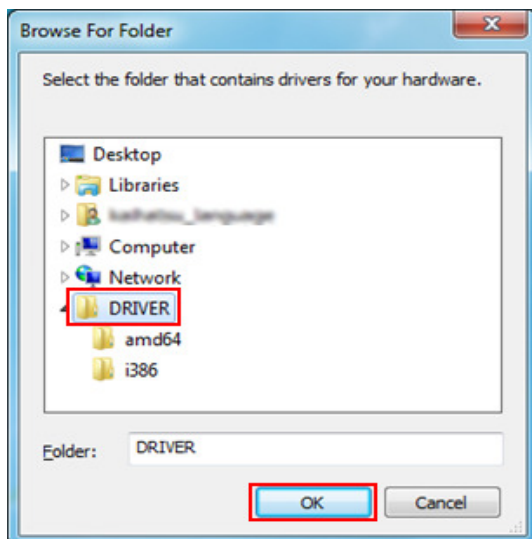
- (3) Select "Browse my computer for driver software".



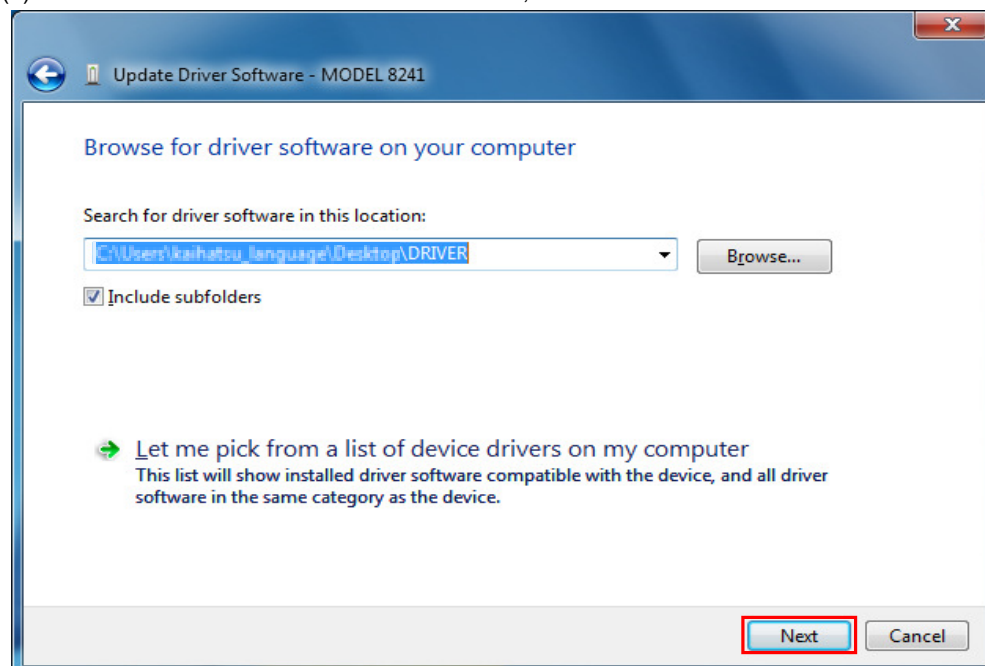
(4) Check the boxes for “Include subfolders”, and then click “Browse”.



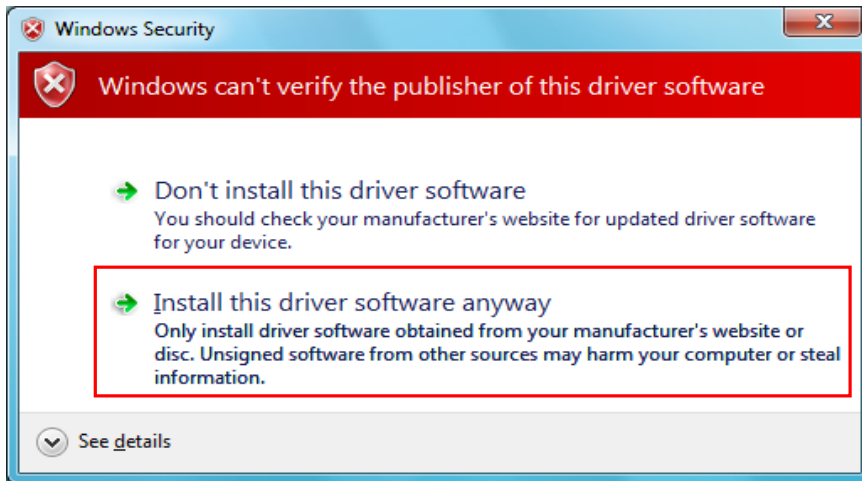
(5) Select a folder to download the file.



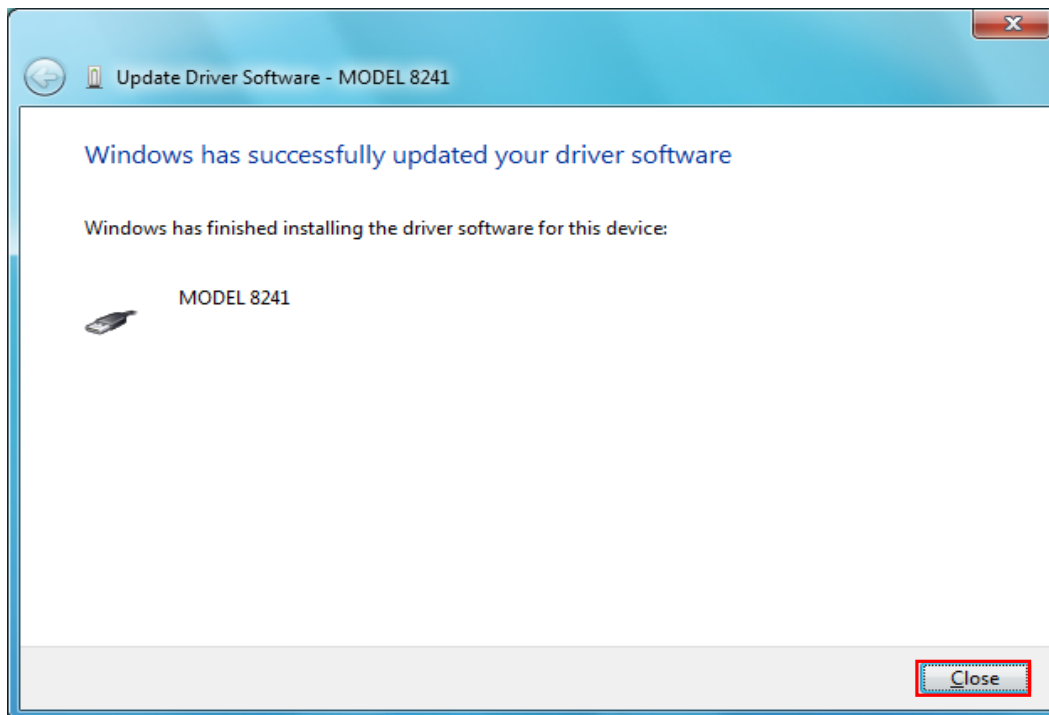
(6) It's confirmed that a chosen folder is indicated, and click “Next”.



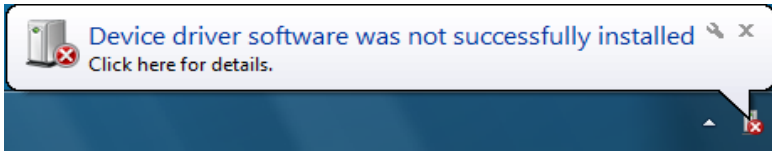
- (7) In case that following window appears on Windows Vista, click "Install this driver software anyway".
(It is an operation check, and no problem happens if install is continued.)



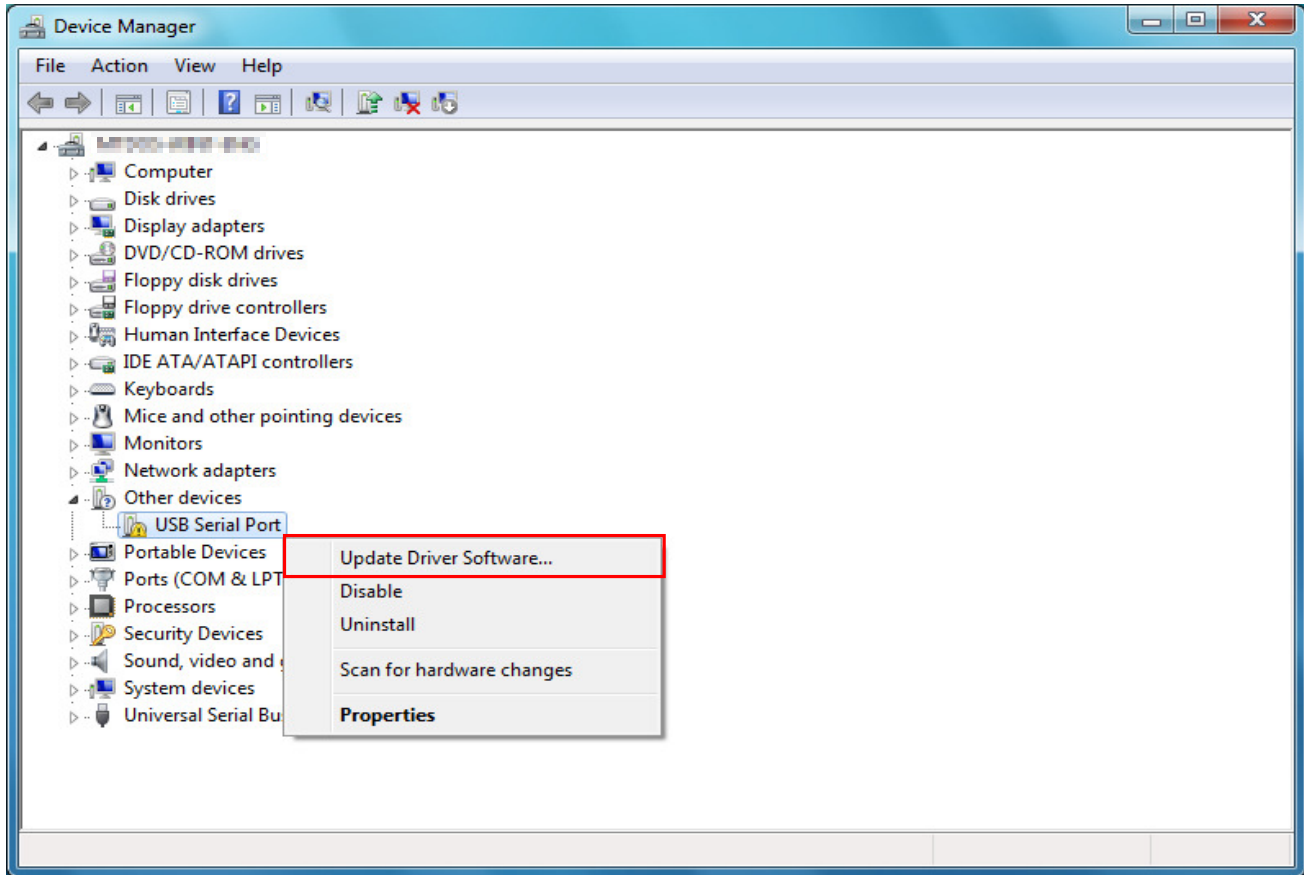
- (8) Install is completed when the wizard finishes. Click "Close".



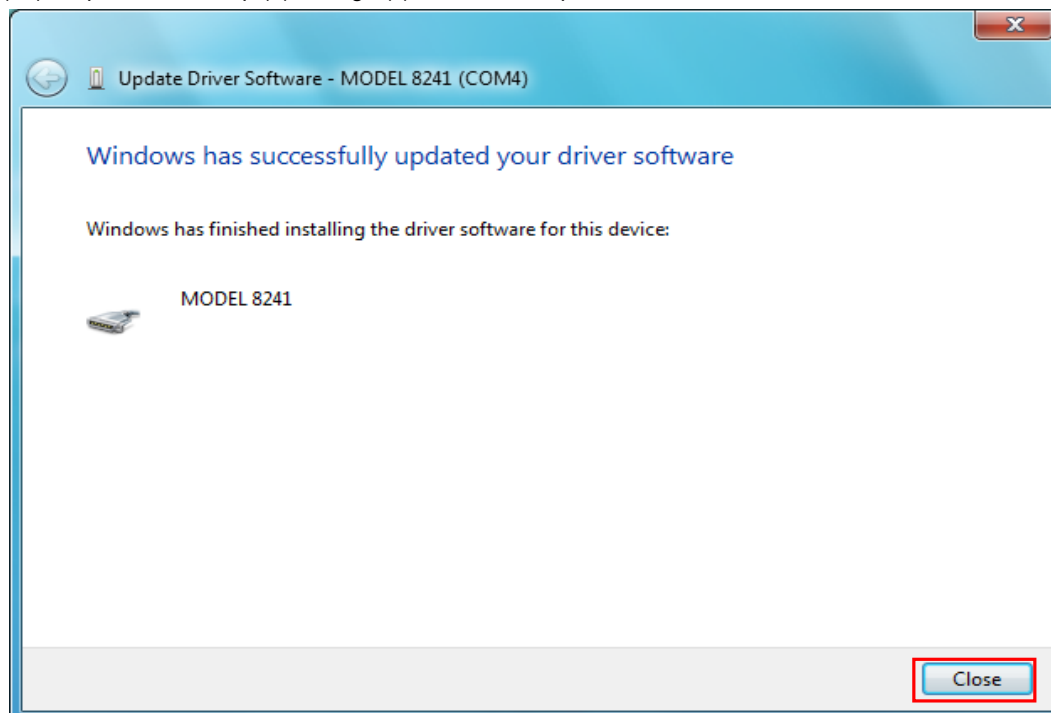
(9) After installation has ended, when a balloon shown below appears, please install by the following procedure.



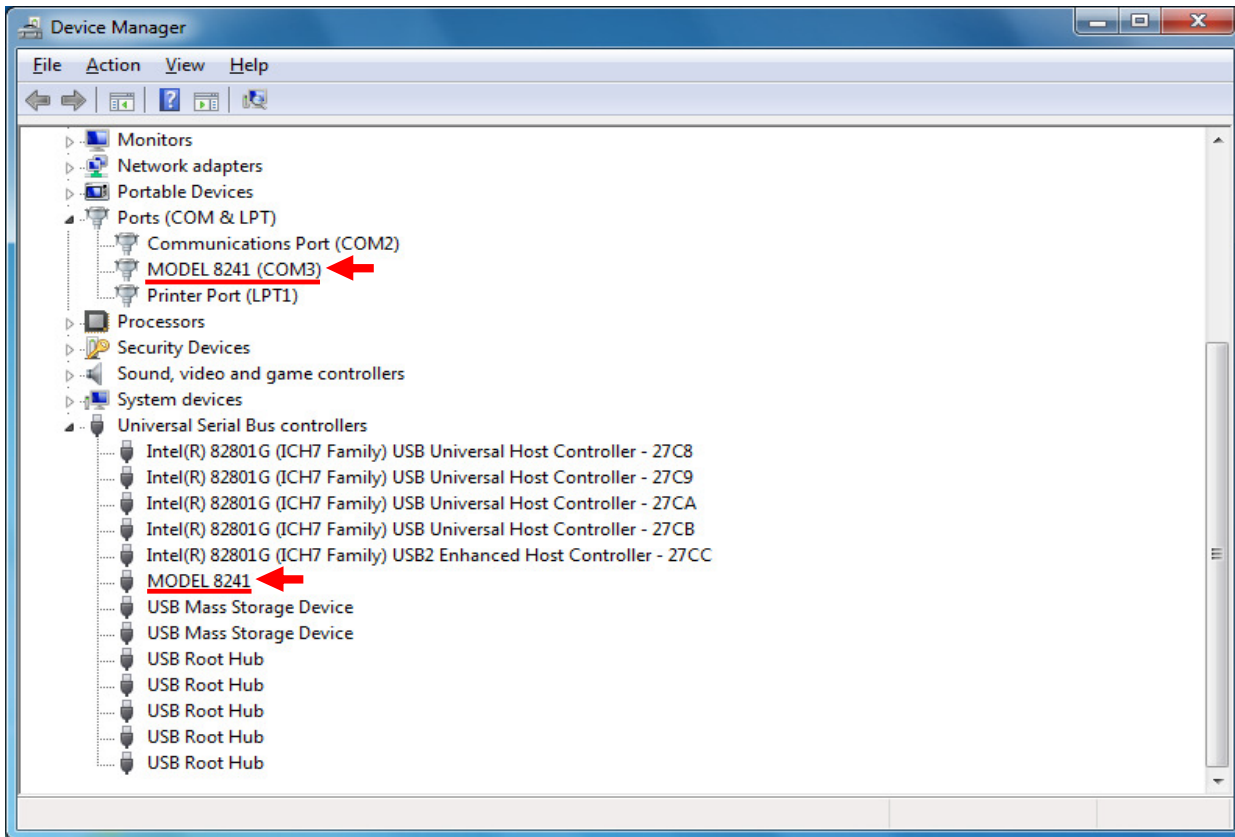
(10) Right click on "USB Serial Port" in the "Other devices" from "Device Manager" and select. Select "Update Driver Software..." from the inside of the item.



(11) Repeat above step (3) through (7). Install is completed when the wizard finishes. Click "Close".



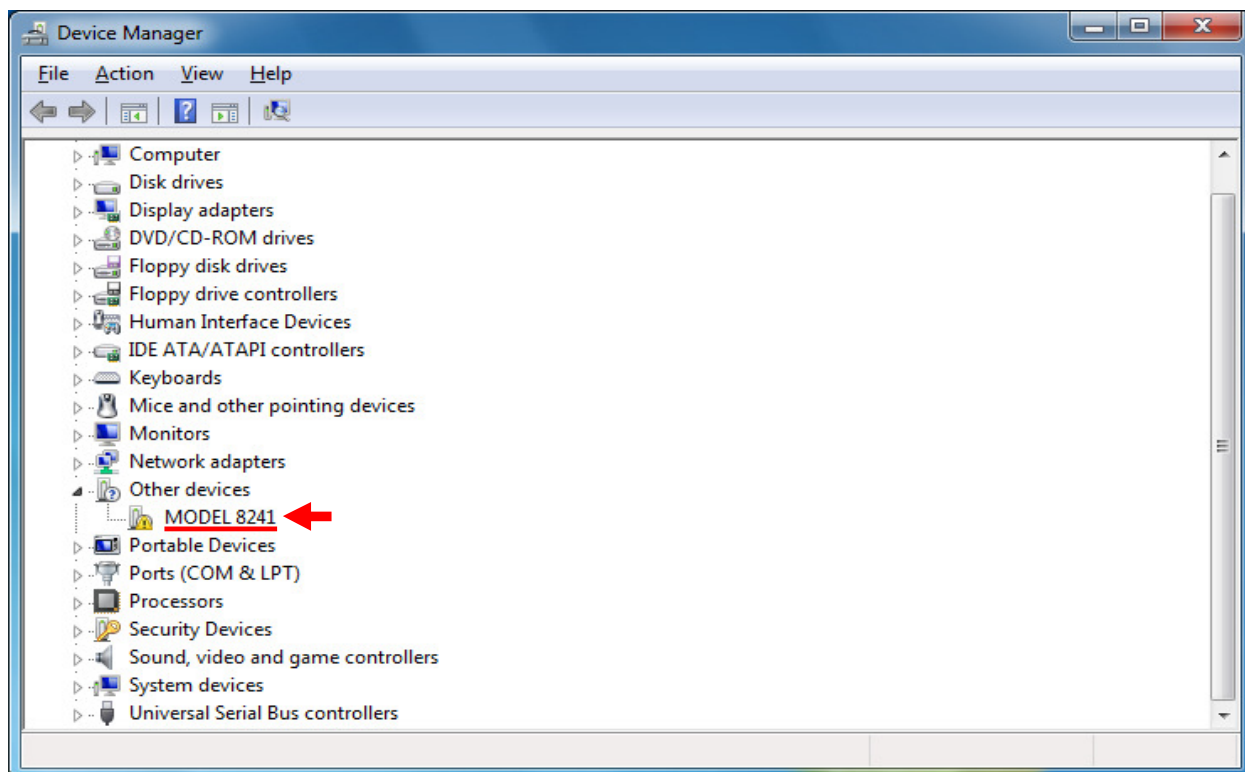
(12) When 2 being installed as shown in the lower figure, a driver was normally installed.



USB Driver Un-installation

When install of the USB driver is interrupted and reinstall cannot be done, follow the procedure below and delete the existing driver, and then install it again.

- (1) Connect a PC and the instrument with a USB cord.
- (2) Click the "Control Panel" in the Start menu.
- (3) Click "Device Manager" in the Control panel.
- (4) **Right click** on "MODEL 8241" in the Other devices.
- (5) Click "Uninstall" to uninstall the USB driver.



- (6) Remove the USB cord connecting your PC and the instrument once, and connect them again.
- (7) When "Found New Hardware Wizard" window appears, follow the procedures described at "USB Driver Installation" and install the driver.