

DMM Application Installation Manual

This manual contains instructions how to install the special software “DMM Application” supplied with MODEL 8241.

1. Introduction

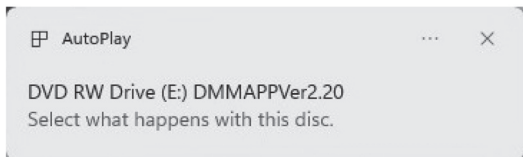
- **Interface**
This instrument is equipped with a USB interface.
Specifications of USB: Ver.1.1 (Reference)
Following can be done by USB communication.
 - Downloading files in the internal memory of the instrument to a PC.
 - Real-time data reception
- **Software**
DMM Application (Supplied CD-ROM)
- **System Requirements**
 - OS (Operation System)
For the supported OS, check the label on the CD case or visit our website.
 - MEMORY
64Mbyte or more
 - Display
1024×768 dots, 65536 colors or more
 - HDD (Hard-disk space required)
10 Mbyte or more
- **Communication Commands**
For details on commands, refer to the manual (PDF) in the CD-ROM.
- **Trademark**
 - Windows® is a registered trademark of Microsoft in the United States.

The latest software is available for download from our website.
www.kew-ltd.co.jp

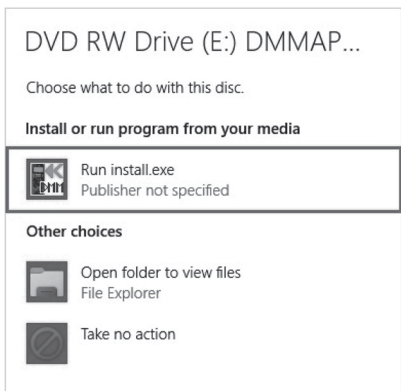
2. DMM application installation

- (1) The followings should be checked before installing this application.
 - To prepare your system for installation, please close all open programs.
 - Be sure NOT to connect DMMs until the installation completes.
 - Installation shall be done with Administrator right.

- (2) Insert the CD-ROM in your PC's CD-ROM drive. Then the following pop-up will appear on the screen. Left click on this box.

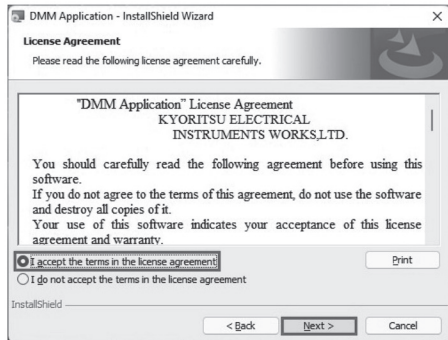


- (3) Click and select “Run install.exe” when the following box appears. If User Account Control dialog box appears, click Yes.



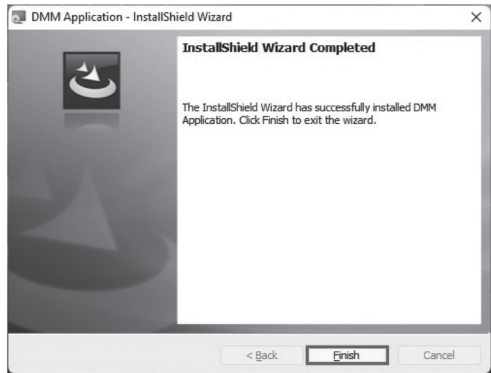
If neither (2) nor (3) appears, run “install.exe” from the CD.

- (4) Read through and understand the License Agreement and click “I accept....”, and then click **Next**.

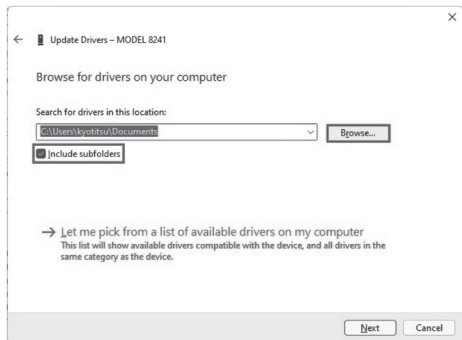


- (5) Confirm the information on installation, and then click **Install** to start installation.

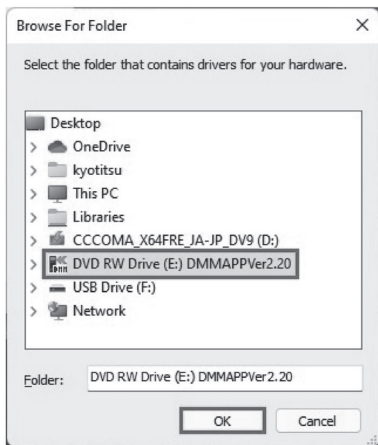
- (6) Click **Finish** when “InstallShield Wizard Complete” dialog box appears.



- (5) Check the box for “Include subfolders”, and then click “Browse”.



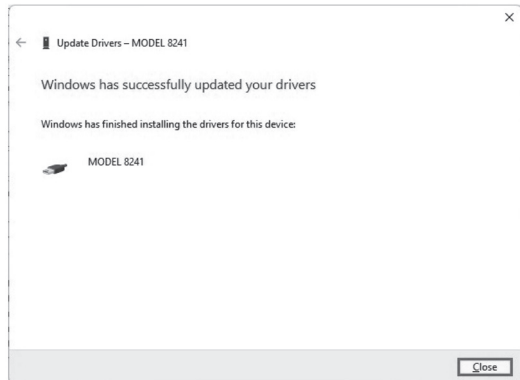
- (6) Select the disk drive in which the CD resides and click OK. If the CD is not inserted, close the window once by clicking Cancel and select again after inserting the CD.



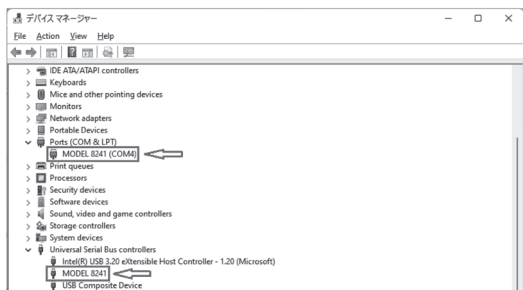
- (7) When the following confirmation message appears, click Install.



- (8) Installation is completed when the wizard says, "Windows has successfully updated your driver software". Click Close.



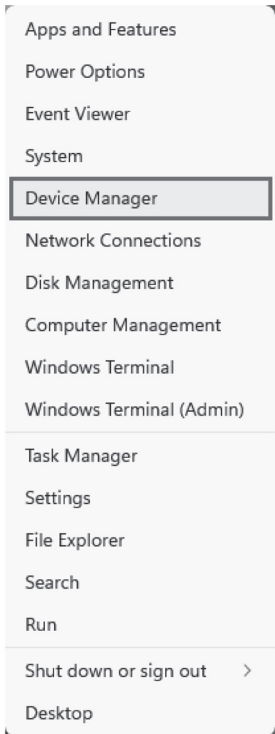
- (9) The following two icons will appear in Device Manager when the driver is successfully installed.



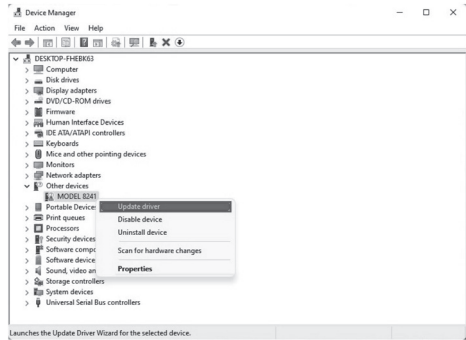
3. USB driver Installation

- (1) Connect MODEL8241 and your PC with the USB cable supplied with the instrument.

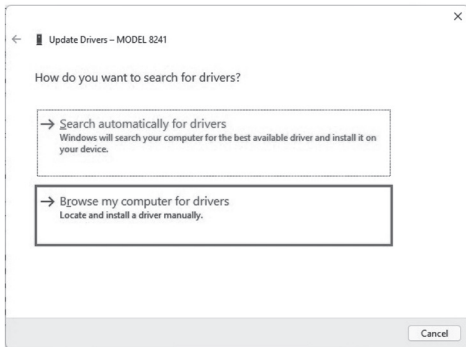
- (2) Right-click Start button and then Device Manager.



- (3) Click Other devices and right click on “MODEL8241”. Then click Update Driver.



- (4) Select” Browse my computer for drivers”.



4. USB driver un-installation

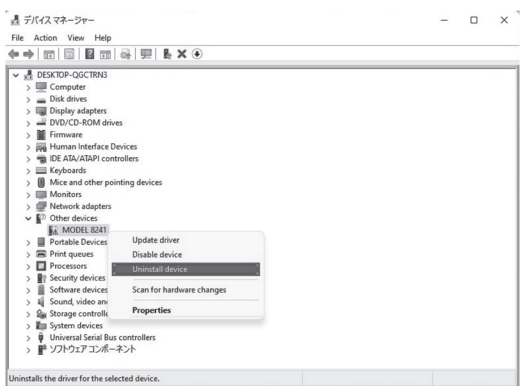
If USB driver installation got aborted and unable to complete re-installation, follow the procedures below and remove the USB driver first. Then restart the whole installation process.

- (1) Connect your PC and MODEL8241 with a USB cable.

- (2) Right-click Start button, and then click Device Manager.

- (3) Click Other devices and right click on MODEL8241.

- (4) Click Uninstall to uninstall the USB driver.



- (5) Disconnect the USB cable connected to the PC once, and connect it again.

- (6) When “Found New Hardware Wizard” window appears, please refer to and follow the procedures described in “3.USB driver installation” to complete installation.

MEMO



**KYORITSU ELECTRICAL
INSTRUMENTS
WORKS, LTD.**

2-5-20,Nakane, Meguro-ku,
Tokyo, 152-0031 Japan
Phone: +81-3-3723-0131
Fax: +81-3-3723-0152
Factory: Ehime,Japan

www.kew-ltd.co.jp