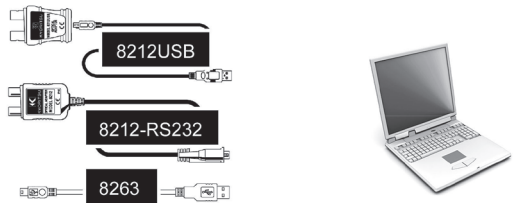


# KEW Report Installation Manual



This manual contains instructions how to install the special software “KEW Report” supplied with MODEL8263, MODEL8212USB and 8212-RS232C.

## 1. Introduction

### ● Interface

This instrument is equipped with a USB interface.  
Communication method: USB Ver1.1

The internal data of the instrument can be transferred to a PC via USB communication.

### ● System Requirements

- OS (Operation System)  
For the supported OS, check the label on the CD case or visit our website.
- Display  
1024×768 dots, 65536 colors or more
- HDD (Hard-disk space required)  
100 Mbyte or more

### ● Trademark

- Windows® is a registered trademark of Microsoft in the United States.

The latest software is available for download from our website.  
[www.kew-ltd.co.jp](http://www.kew-ltd.co.jp)

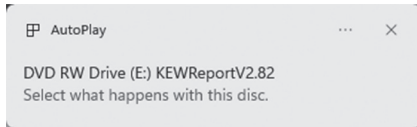


## 2. Installation of “KEW Report”

(1) Always check the followings before installing “KEW Report”.

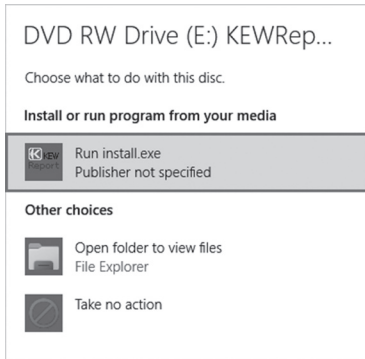
- To prepare your system for installation, please close all open programs.
- Be sure NOT to connect the instrument to a PC until the installation completes.
- Installation shall be done with Administrator right.

(2) Insert the supplied CD-ROM containing “KEW Report” in your PC’s CD-ROM drive. Then the following pop-up will appear at the upper right on the screen. Left-click on this box.



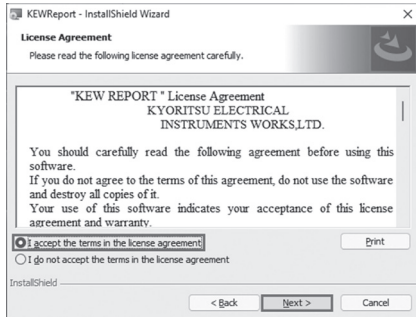
(3) Click **Run install.exe** when the box as shown below appears.

If User Account Control dialog box appears, click **Yes**.



If neither (2) nor (3) appears, click the CD icon and run “install.exe” file.

(4) Read through and understand the License Agreement and click “I accept...”, and then click **Next**.



(5) Confirm the information on installation, and then click **Install** to start installation.

(6) Click **Finish** when “InstallShield Wizard Complete” dialog box appears. When the installation wizard completes, subsequent installation begins automatically. Please refer to **3. USB driver installation**.



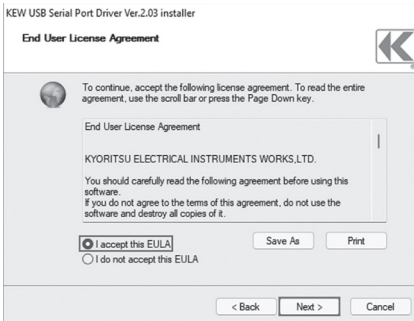
**How to un-install “KEW Report” :**  
Open the Control panel, click **Programs and Features** and select “KEW Report”.

## 3. USB Driver Installation

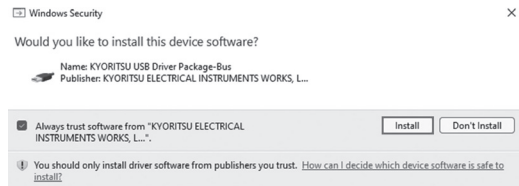
(1) When KEW Report has been successfully installed in your computer, the following dialog box appears to start installing the USB driver.  
Click **Next**.



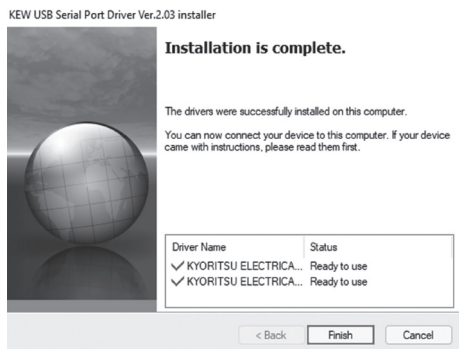
(2) Read through and understand the End User License Agreement and click “I accept...”, and then click **Next**.



(3) If the following Security Warning message appears, click **Install**.



(4) Installation completes when the following window appears.  
Click **Finish**.



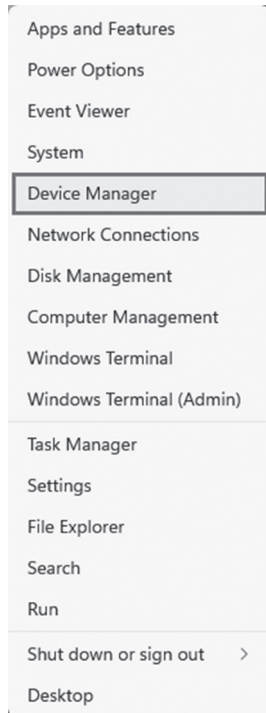
The USB driver has been successfully installed.

**To restart the interrupted USB driver installation process, right click on the CD drive and click Open. Click and start “kewusbserial200\_setup.exe” in the DRIVER folder.**

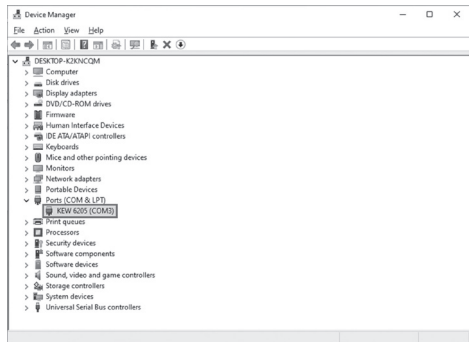
**How to un-install the USB driver:**  
Open the Control panel, click **Programs and Features** and select “**Windows Driver Package - KYORITSU ELECTRICAL INSTRUMENTS WORKS, LTD. KYORITSU USB Driver Package-Bus**”.

## 4. Checking COM Port No.

(1) Right-click **Start** button and then **Device Manager**.



(2) Click **Ports (COM & LPT)** to see the COM port number assigned for the instrument.

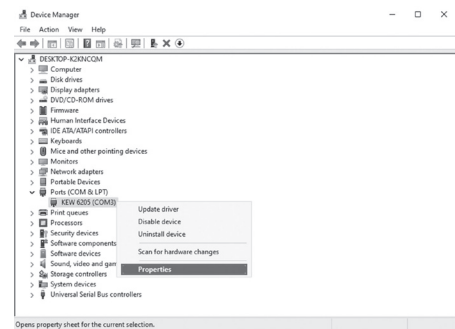


(3) If the assigned number is out of COM1 to COM32, follow the instructions described in **5. Changing COM Port No.** and change the number accordingly.

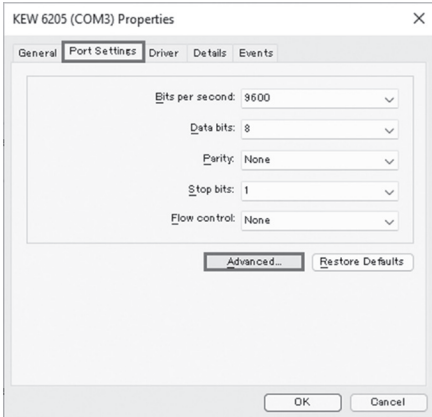
## 5. Changing COM Port No.

(1) Follow the procedures described in **4. Checking COM Port No.** and perform steps (1) to (3).

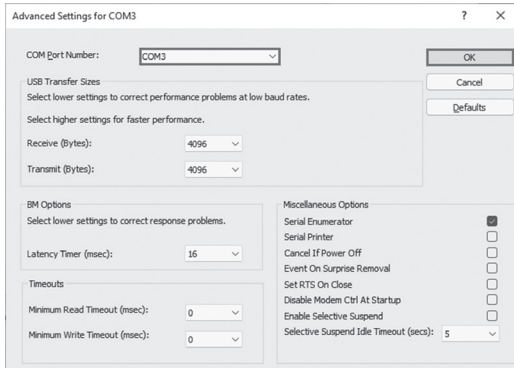
(2) After performing step (3), select the displayed instrument name (**COMx**) and click **Properties**.



(3) Click **Port Settings** tab, and then click **Advanced...**



(4) Click and select a number (from COM1 to COM32) on the **COM Port Number:** box, and then click **OK**.

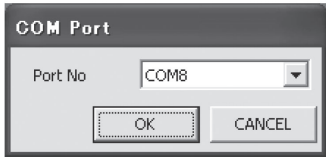


## 6. Starting KEW Report

Start “KEW Report” by; 1) clicking the icon for “KEW Report” on your desktop, or 2) clicking **Start -> Program -> KEW -> KEW Report**.

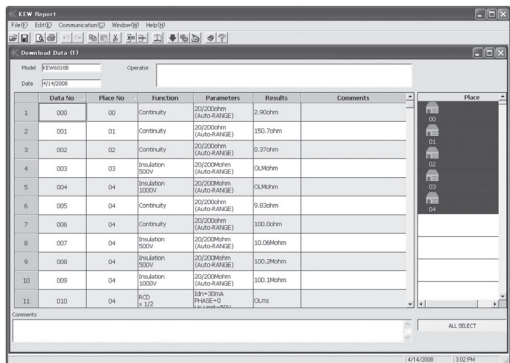
(1) COM Port setting

Click **Communication -> COM Port** on the Main Window of “KEW Report”, and select the pre-set COM Port number.



(2) Download

Click **Communication -> Download** on the Main Window of “KEW Report”. Then the following window appears. Click **Exit** or “x” box at the upper right of the window to close the program.



Further detailed information is given in the **HELP**.



**KYORITSU ELECTRICAL  
INSTRUMENTS  
WORKS, LTD.**

2-5-20, Nakane, Meguro-ku,  
Tokyo, 152-0031 Japan  
Phone: +81-3-3723-0131  
Fax: +81-3-3723-0152  
Factory: Ehime, Japan

[www.kew-ltd.co.jp](http://www.kew-ltd.co.jp)