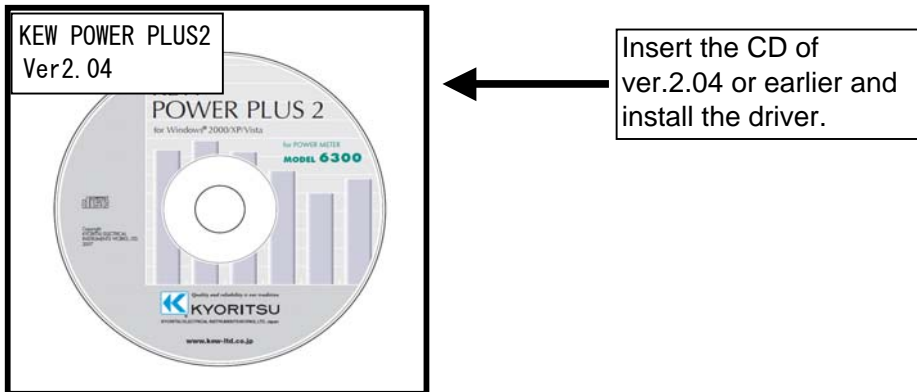


When purchasing another MODEL6300 and installing the driver on Windows 2000/XP, installation of disk may be demanded. In such a case, install the driver contained in the KEW POWER PLUS2 (ver.2.04 or earlier).

If you lost the CD, please download the driver for "Windows2000/XP/Vista" from our Software download site: <http://www.kew-ltd.co.jp/en/download/index.html>

\*Label stuck on the case for KEW POWER PLUS2 shows its version.



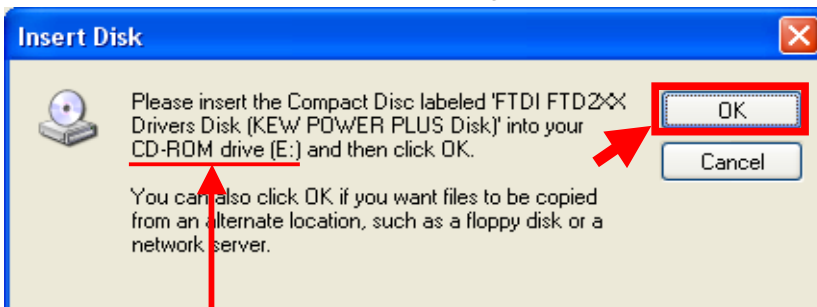
Following window appears when installing the driver contained in the KEW POWER PLUS2 ver.2.05 or later.

**When installation of a disk is demanded:**

Please follow below instructions to install the driver.

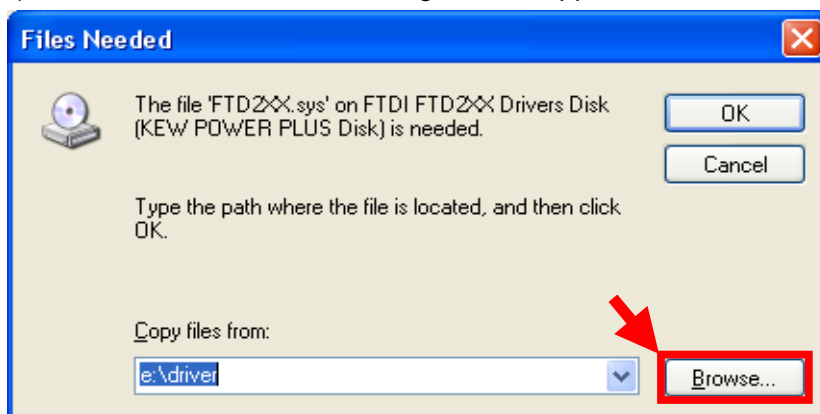
Installation procedure

1) Click "OK" on the "Insert Disk" dialogue box.

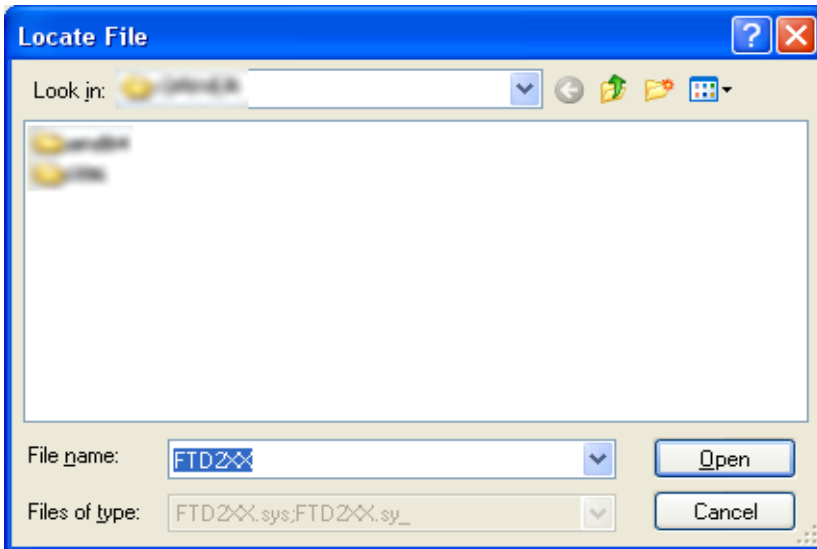


CD/ DVD drive and disk name depend on your PC environment.

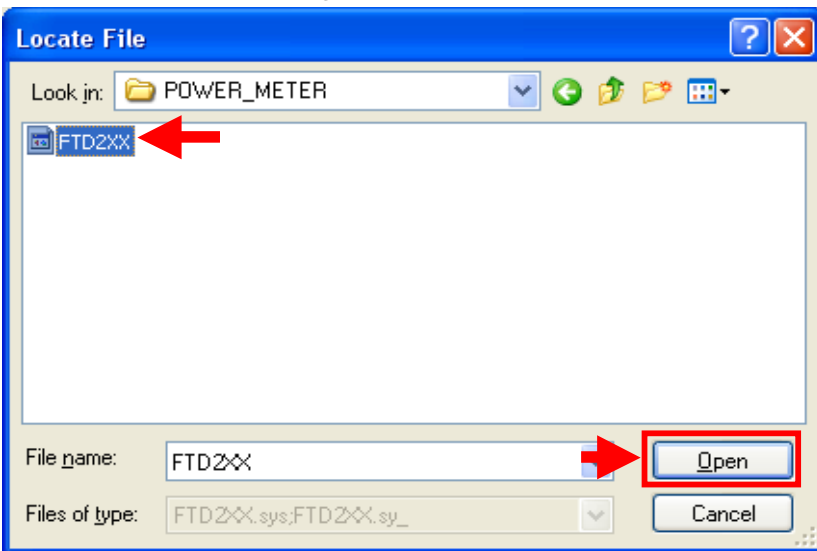
2) Click "Browse..." when following window appears.



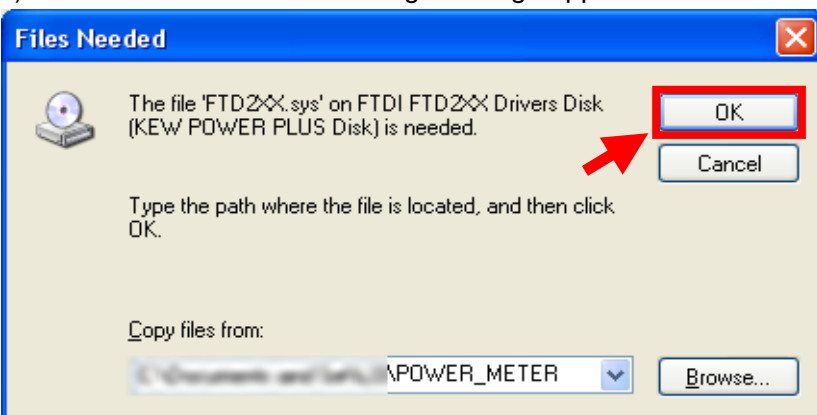
3) Then a window showing the file location is displayed.



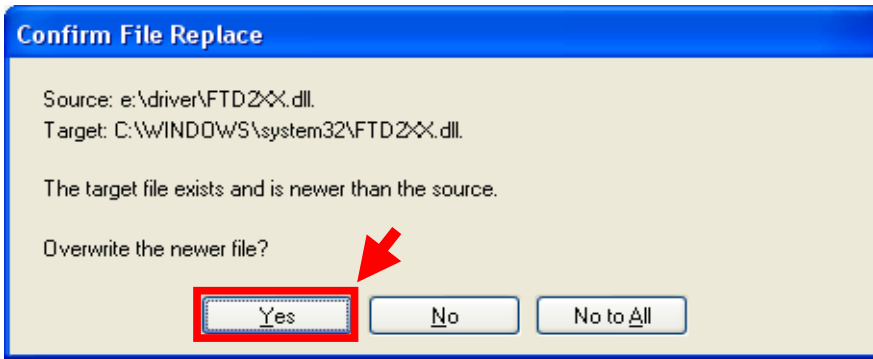
4) Unzip the self-extracting file and select "FTD2XX" contained in the new folder. Then click "Open".



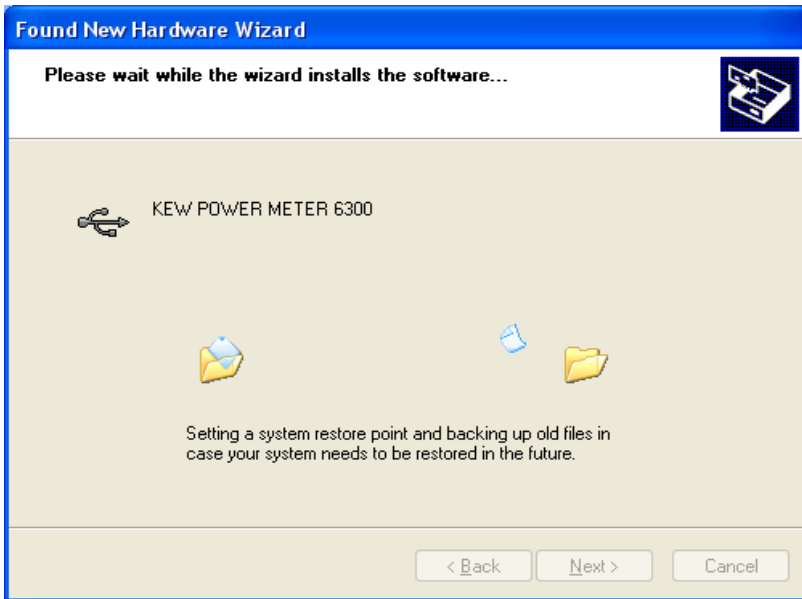
5) Then click "OK" when following message appears.



6) Then click "Yes" when following message appears.



The following window appears.



7) Now installation completes. Click "Finish" to finish the installation.

