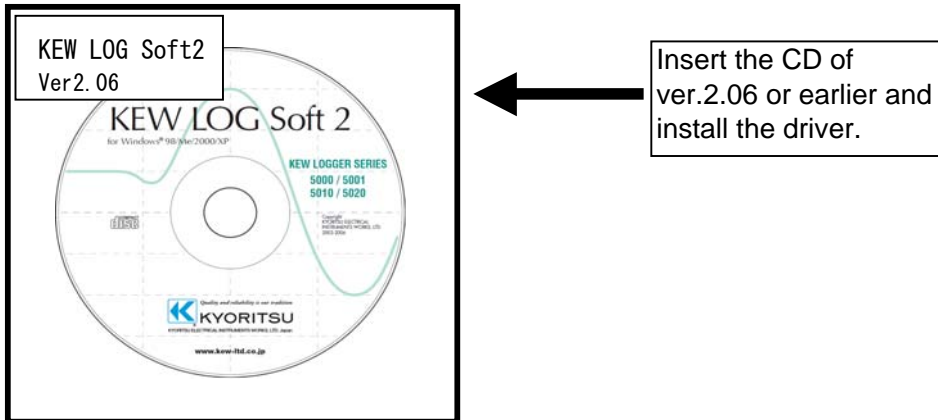


When purchasing another models in Logger series and installing the driver on Windows 2000/XP, installation of disk may be demanded. In such a case, install the driver contained in the KEW LOG Soft2 (ver.2.06 or earlier).

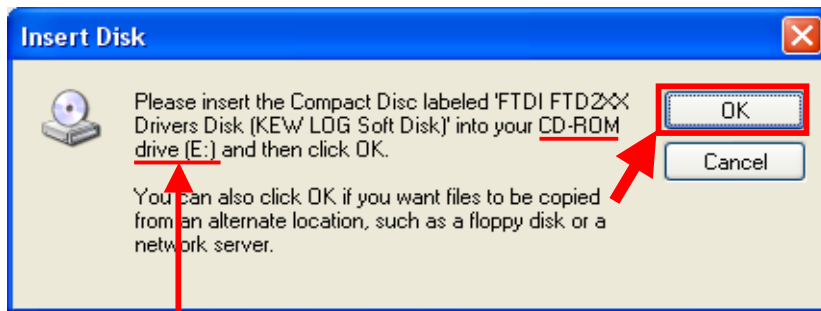
*Label stuck on the case for KEW LOG Soft2 shows its version.



Following window appears when installing the driver contained in the KEW LOG Soft2 ver.2.07 or later. Remove the CD and insert the KEW LOG Soft ver. 2.06 or earlier, and then click "OK". Please follow below procedures to install the driver.

When installation of a disk is demanded:

Please follow below instructions to install the driver.

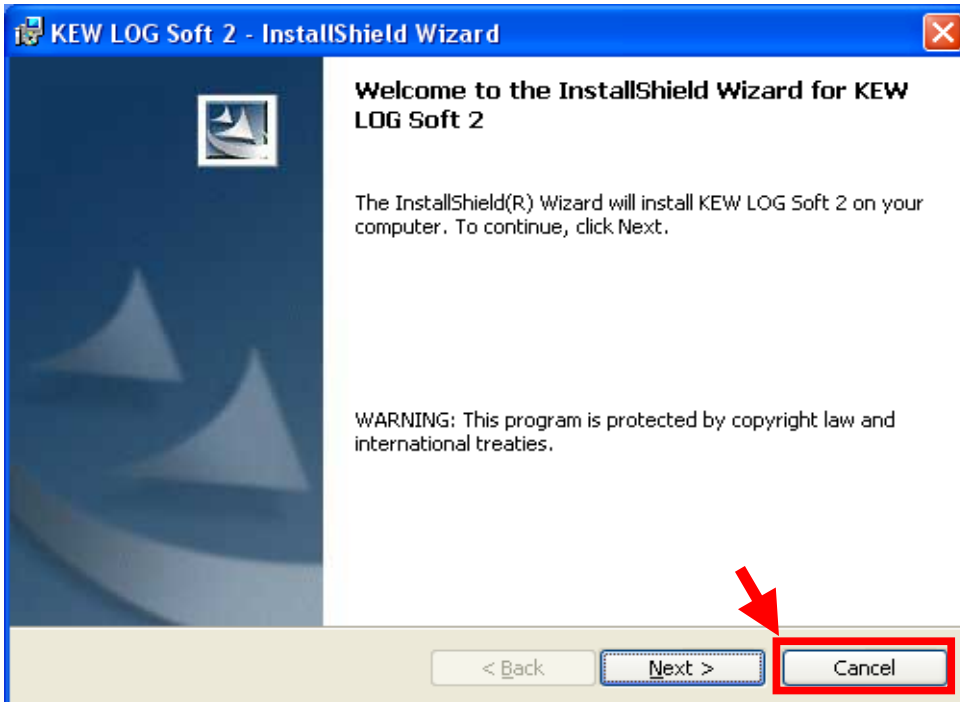


CD/ DVD drive and disk name depend on your PC environment.

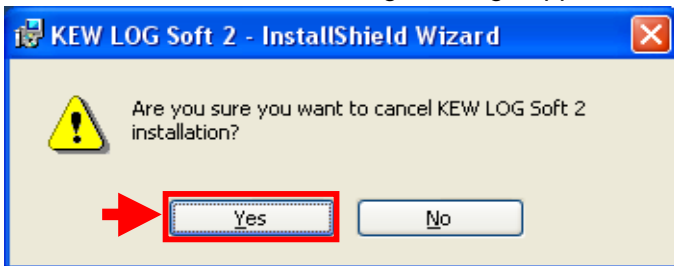
Installation procedure

1) Replace the CD with the KEW LOG Soft2 ver.2.06 or earlier one when Insert Disk window appears, and then click "OK".

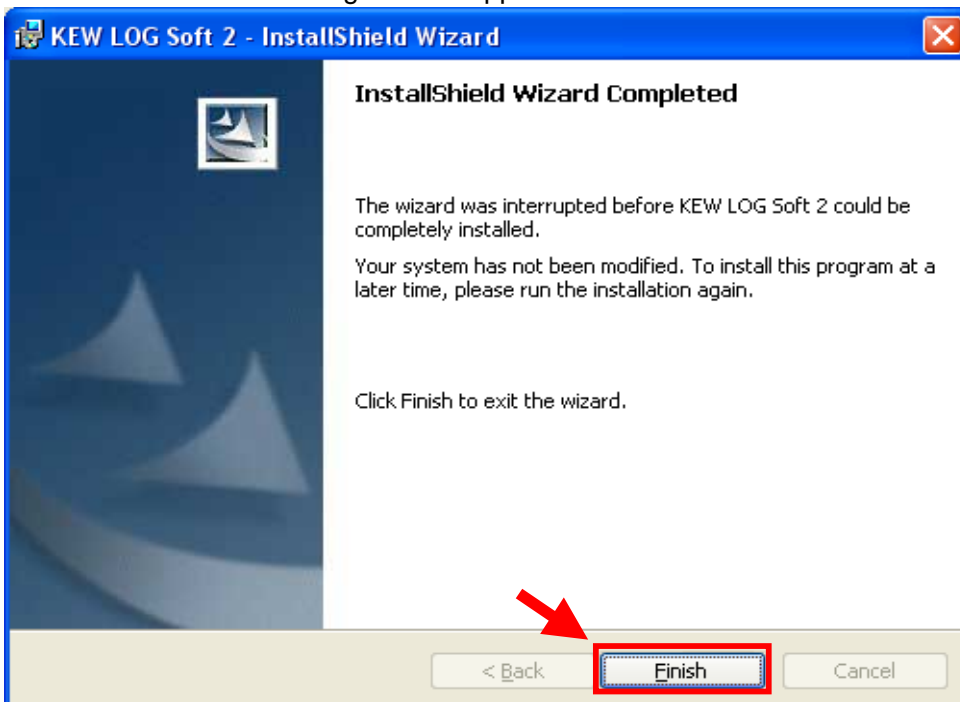
* Click "Cancel" when a following window appears after replacing the CD.



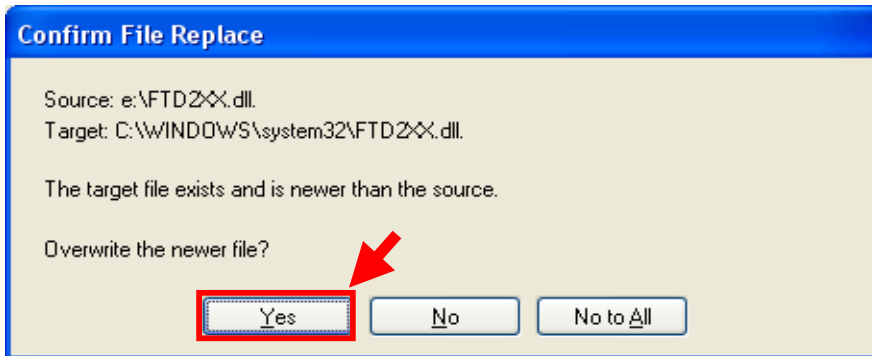
Then click "Yes" when following message appears.



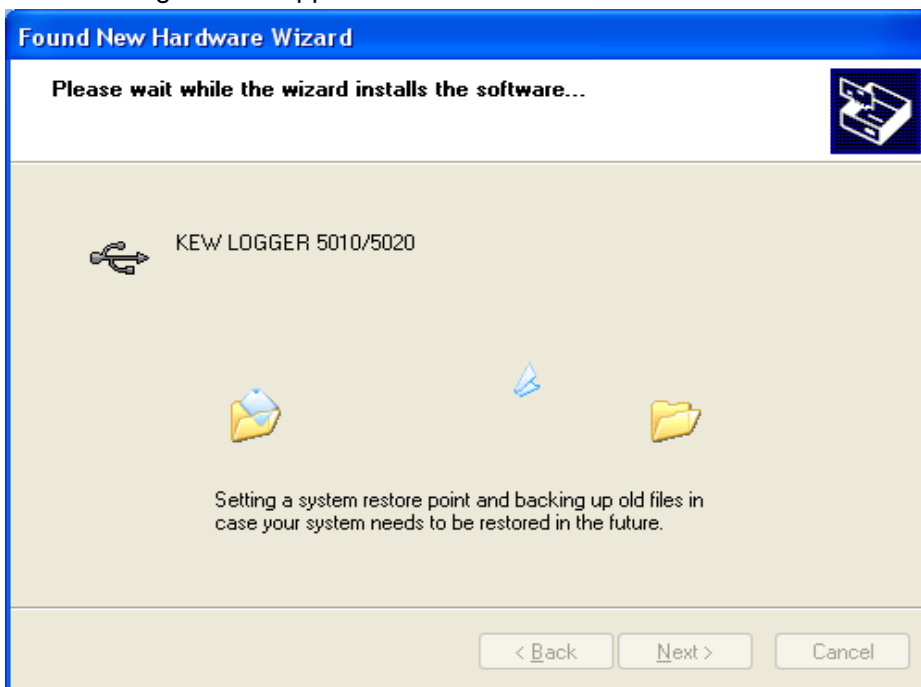
Click "Finish" when following window appears.



2) Click "Yes" when following message appears.



The following window appears.



3) Now installation completes. Click "Finish" to finish the installation.

