

Installation Manual for "KEWReport"

This manual contains explanations how to install the special application and the USB driver on Windows 8/10 PCs.

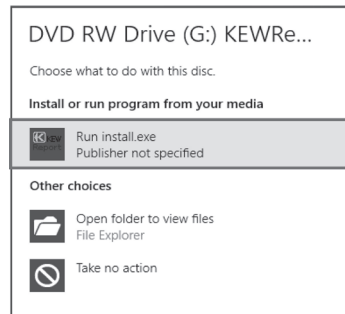
1. Installation of KEWReport

- The following should be checked before installing this application.
 - To prepare your system for installation, please close all open programs.
 - Be sure NOT to connect the instrument with the USB until installation completes.
 - Installation shall be done with Administrator right.

- Insert the CD-ROM in your PC's CD drive. Then following pop-up will appear at the upper right on the screen. Left-click on this box.

DVD RW Drive (G:) KEWReportV221
Tap to choose what happens with this disc.

- Click and select "Run install.exe" when the following box appears. If User Account Control dialog box appears, click "Yes".



If neither (2) nor (3) appears, run "install.exe" from the CD.

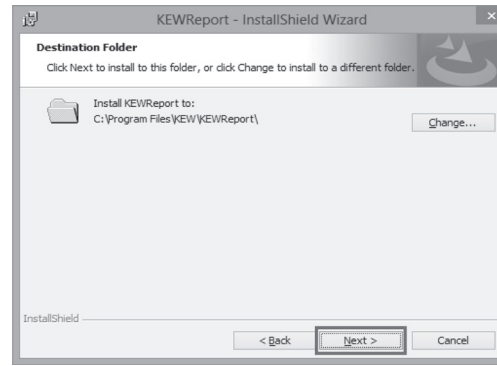
- When the following window appears, click "Next".



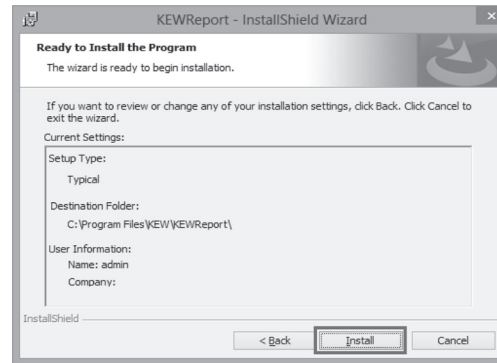
- Read through and understand the License Agreement and click "I accept...", and then click "Next".



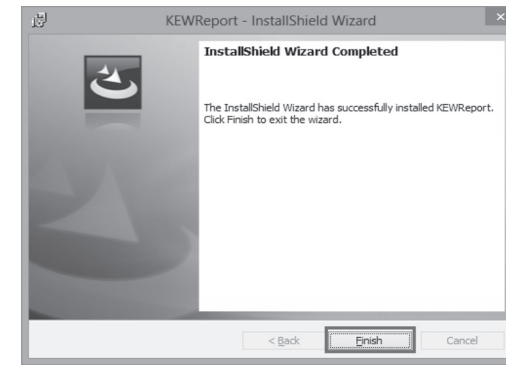
- Click "Next".



- Confirm the information on installation, and then click "Install" to start an installation.

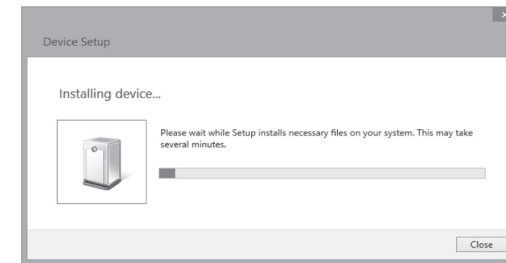


- Click "Finish" when "InstallShield Wizard Complete" dialog box appears.

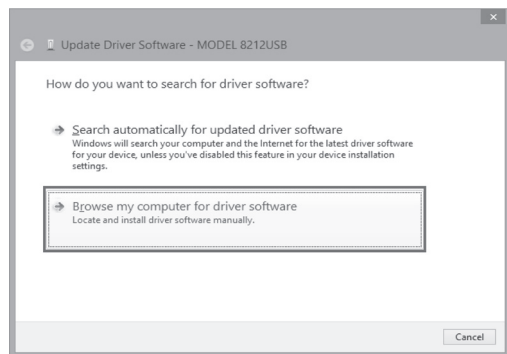


2. Installation of USB Driver

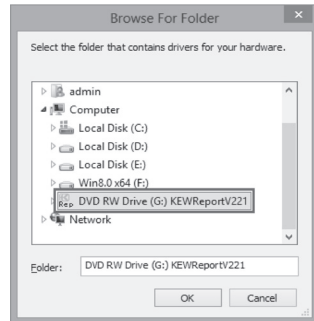
- Connect MODEL8212 and your PC with the USB cable supplied with the instrument. When the following window appears, install the driver according to the following procedure.



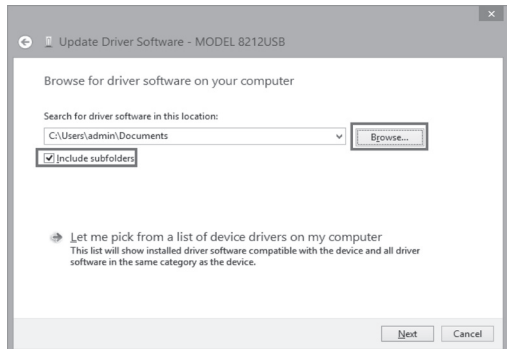
- Select "Browse my computer for driver software".



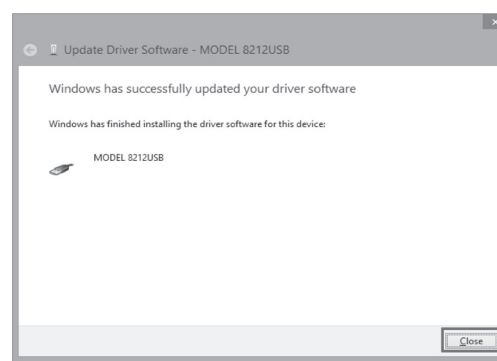
- Select the disk drive in which the CD resides and click OK. If the CD is not inserted, close the window once by clicking "Cancel" and select again after inserting the CD.



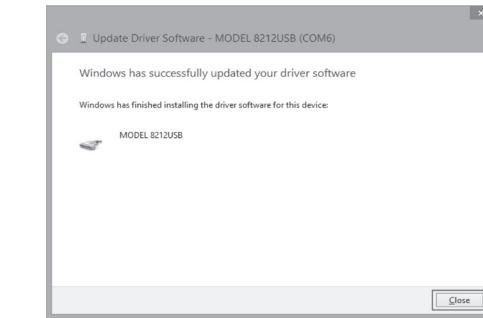
- Check the box for "Include subfolders", and then click "Browse".



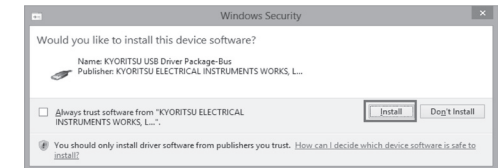
- Install is completed when the wizard says "Windows has successfully updated your driver software". Click "Close".



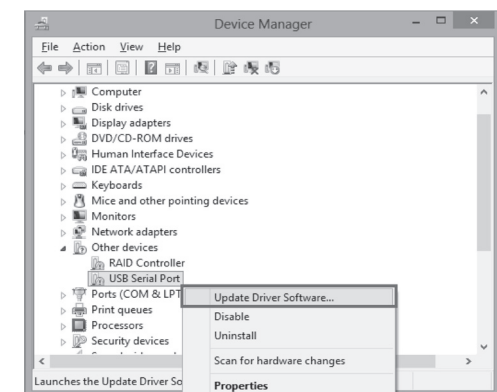
- Repeat above step (3) through (6). Installation is completed when the wizard says "Windows has successfully updated your driver software". Click "Close".



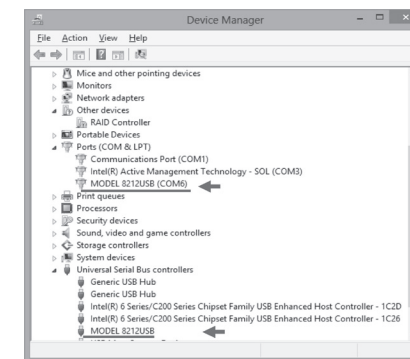
- When the following confirmation message appears, after clicking "Next", click "Install".



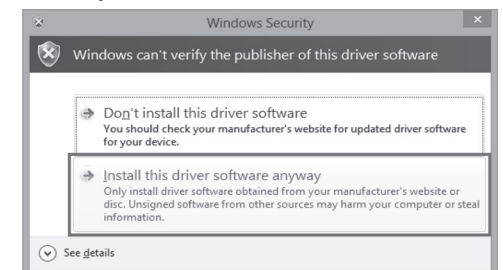
- Click "Other devices" under the Device Manager, and then right-click on "USB Serial Port". Then click "Update Driver Software".



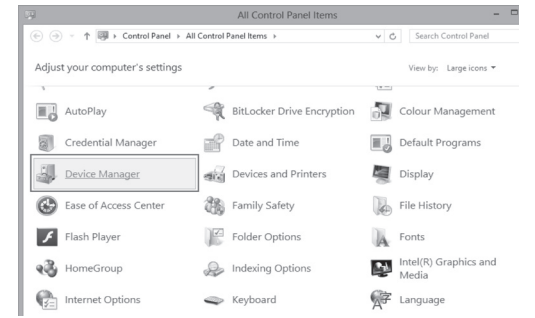
- The following two icons will appear in the Device Manager when the driver is successfully installed.



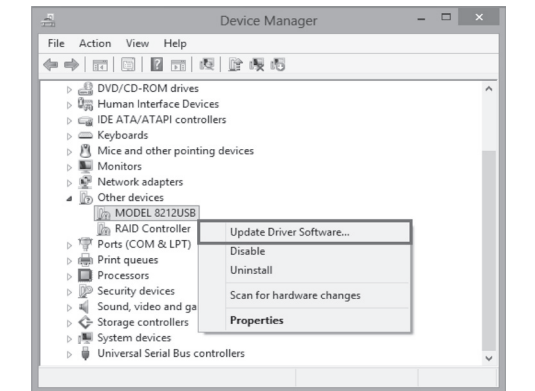
- Select "Install this driver software anyway" if the following warning window appears. (There is no problem to continue installing because operation has already been verified.)



- Click "Control Panel" -> "Device Manager".



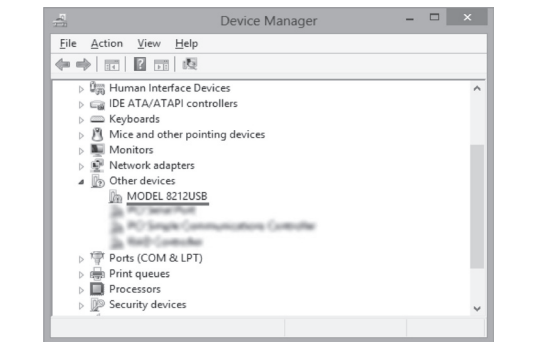
- Click "Other devices" and then right-click on "MODEL8212". Then click "Update Driver Software".



USB Driver Un-installation

When the installation of the USB driver is interrupted and re-installation cannot be done, follow the procedure below and delete the existing driver, and then install it again.

- Connect your PC and the instrument with the USB cord.
- Click the "Control Panel" in the Start menu.
- Click "Device Manager" in the Control panel.
- Right click on "MODEL8212 USB" under "Other devices".
- Click "Uninstall" to uninstall the USB driver.



- Remove the USB cord connecting your PC and the instrument once, and connect them again.

- When "Found New Hardware Wizard" window appears, follow the procedures described in "USB Driver Installation" and install the driver.