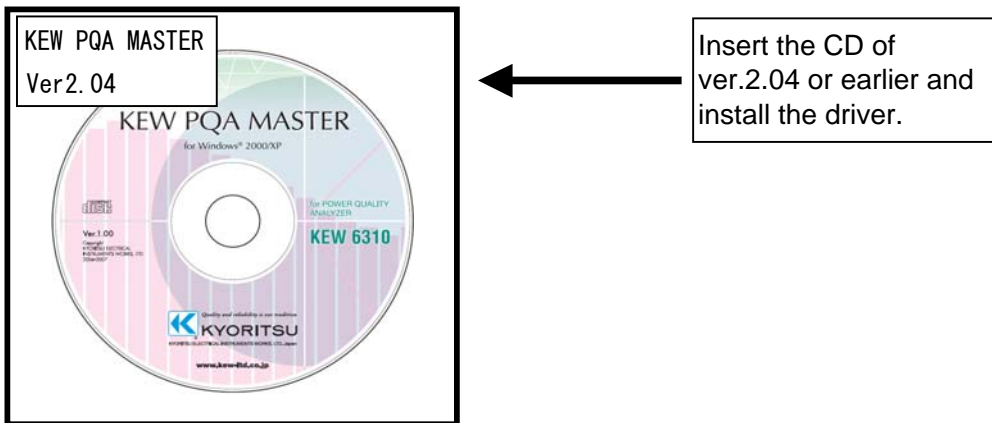


When purchasing another KEW6310 and installing the driver on Windows 2000/XP, installation of disk may be demanded. In such a case, install the driver contained in the KEW PQA MASTER (ver.2.04 or earlier).

*Label stuck on the case for KEW PQA MASTER shows its version.

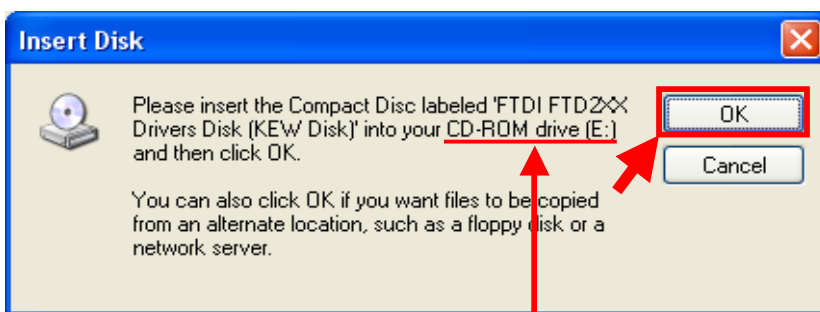


Following window appears when installing the driver contained in the KEW PQA MASTER ver. 2.05 or later. Remove the CD and insert the KEW PQA MASTER ver. 2.04 or earlier, and then click "OK".

Please follow below procedures to install the driver.

When installation of a disk is demanded:

Please follow below instructions to install the driver.

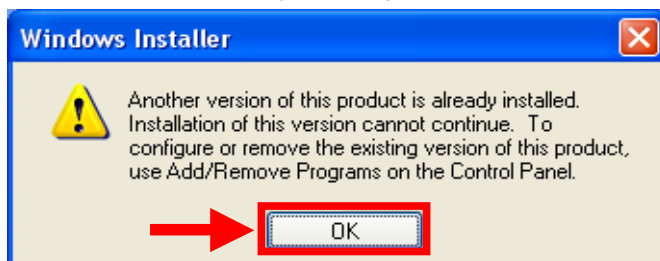


CD/ DVD drive and disk name depend on your PC environment.

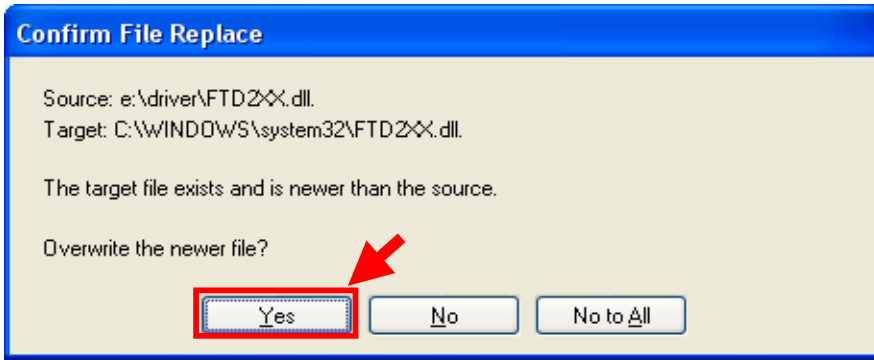
Installation procedure

1) Replace the CD with the KEW PQA MASTER ver.2.04 or earlier one when Insert Disk window appears, and then click "OK".

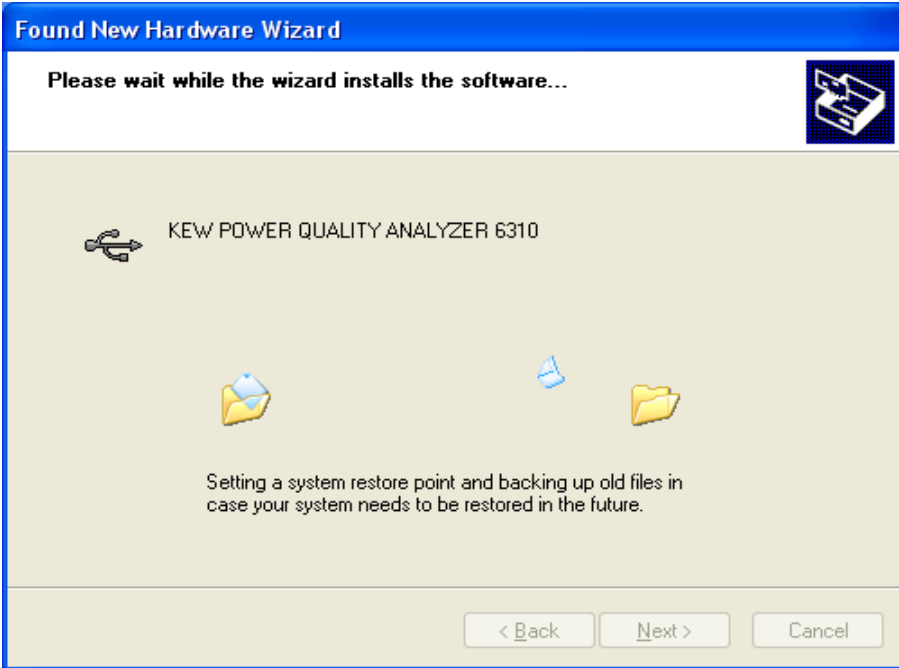
* Click "OK" if following message appears after replacing the CDs.



2) Then click "Yes" when following message appears.



The following window appears.



3) Now installation completes. Click "Finish" to finish the installation.

