

When purchasing another MODEL6300 and installing the driver on Windows 2000/XP, installation of disk may be demanded. In such a case, install the driver contained in the KEW POWER PLUS2 (ver.2.04 or earlier).

*Label stuck on the case for KEW POWER PLUS2 shows its version.

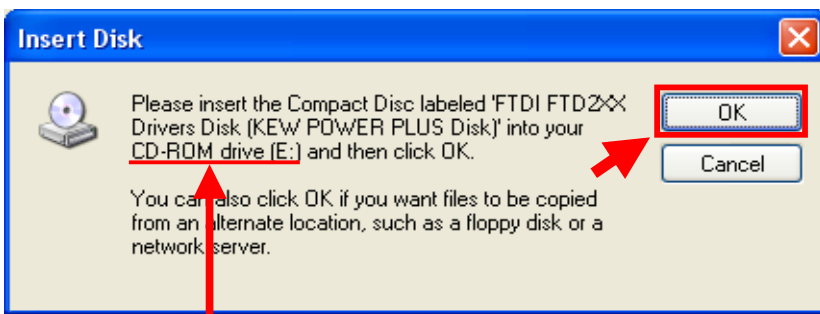


Insert the CD of ver.2.04 or earlier and install the driver.

Following window appears when installing the driver contained in the KEW POWER PLUS2 ver. 2.05 or later. Remove the CD and insert the KEW POWER PLUS2 ver. 2.04 or earlier, and then click "OK". Please follow below procedures to install the driver.

When installation of a disk is demanded:

Please follow below instructions to install the driver.

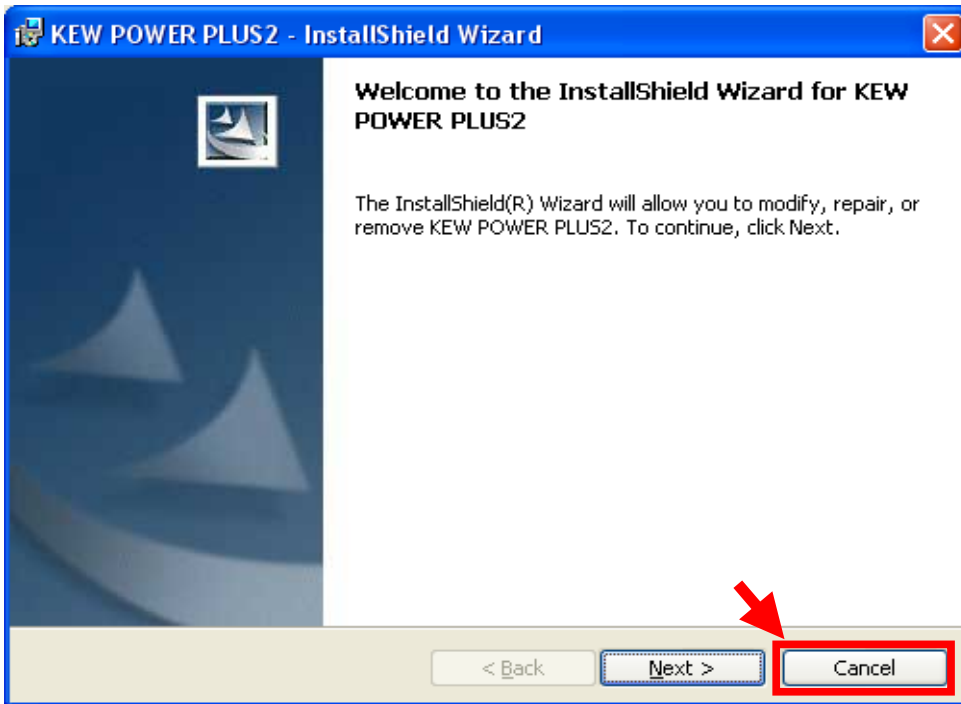


CD/ DVD drive and disk name depend on your PC environment.

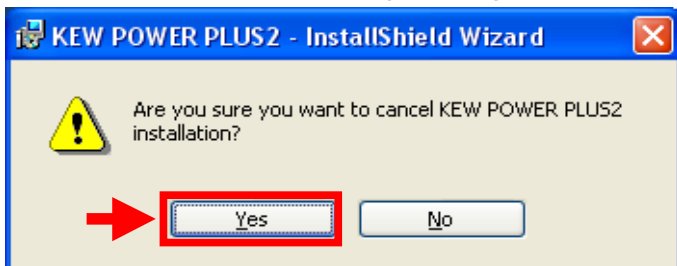
Installation Procedures

1) Replace the CD with the KEW POWER PLUS2 ver.2.04 or earlier one when Insert Disk window appears, and then click "OK".

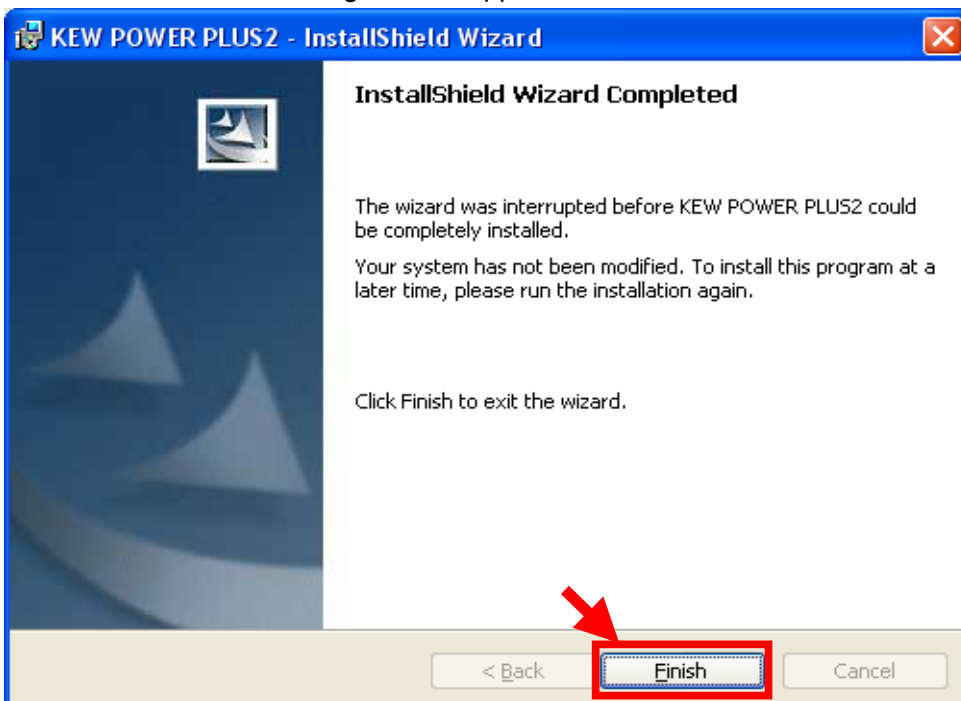
Click "Cancel" when a following window appears after replacing the CD.



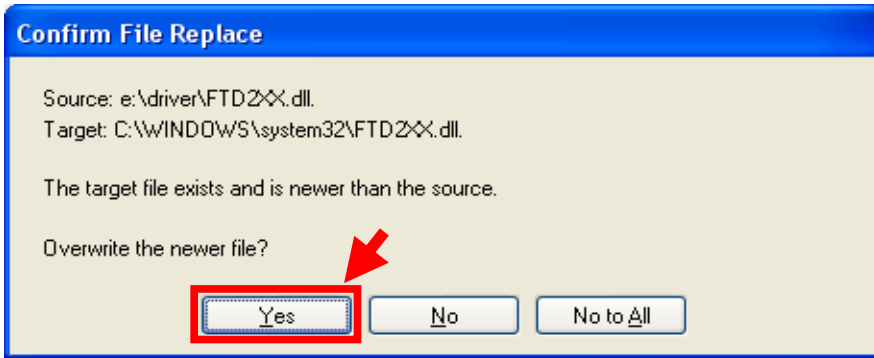
Then click "Yes" when following message appears.



Click "Finish" when following window appears.



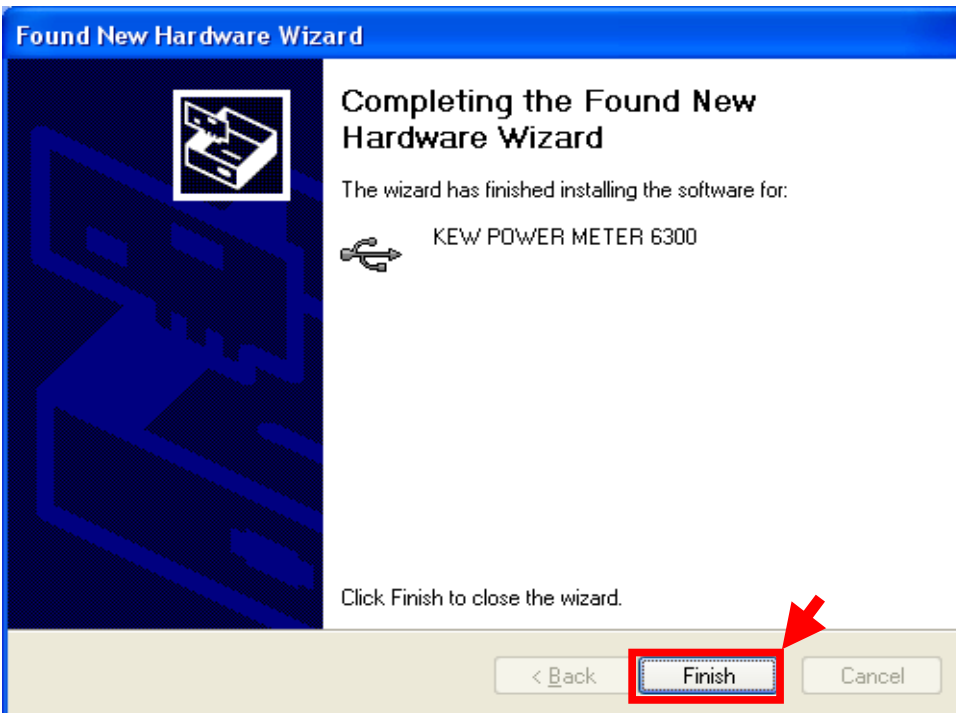
2) Click "Yes" when following message appears.



The following window appears.



3) Now installation completes. Click "Finish" to finish the installation.



* Windows® is a registered trademark of Microsoft in the United states.