

# USB Driver Installation

- (1) Connect one end of a USB cord to your PC.
- (2) Connect the other end of USB cord to the Communication Adapter.
- (3) After connecting them properly, following balloon appears.



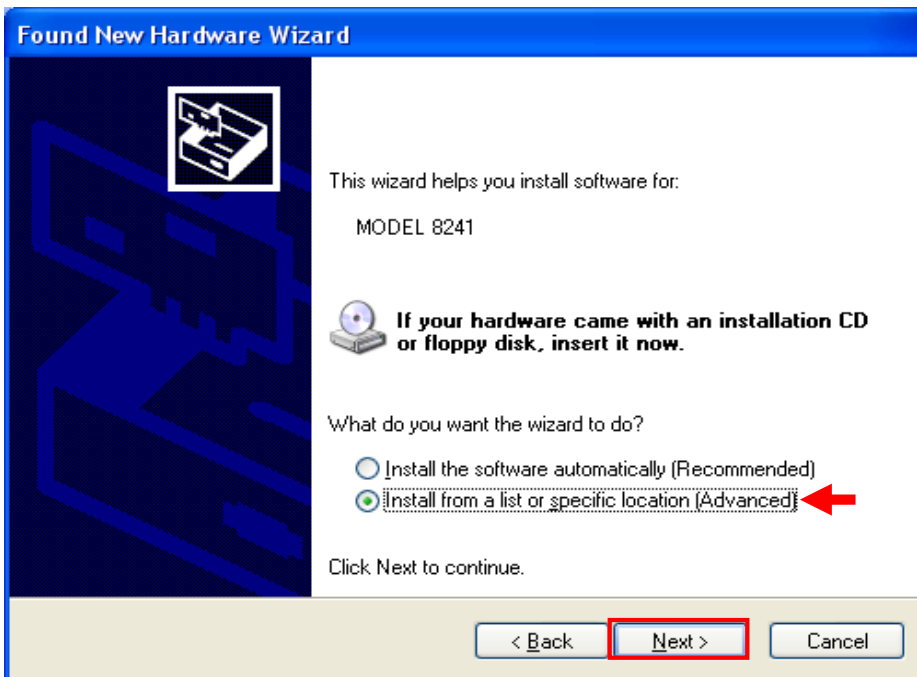
\* A balloon shown below appears after following steps (4) to (10) complete. Step (4) to (10) will be repeated twice.



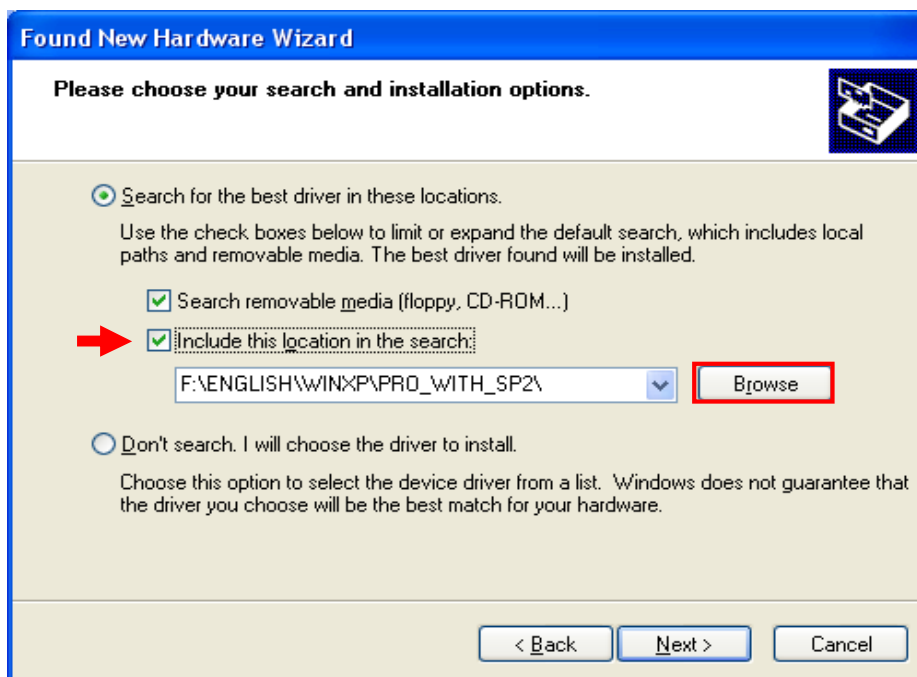
- (4) (3) but after being indicated, the following figure is indicated. Select "No, not this time.", and click "Next".



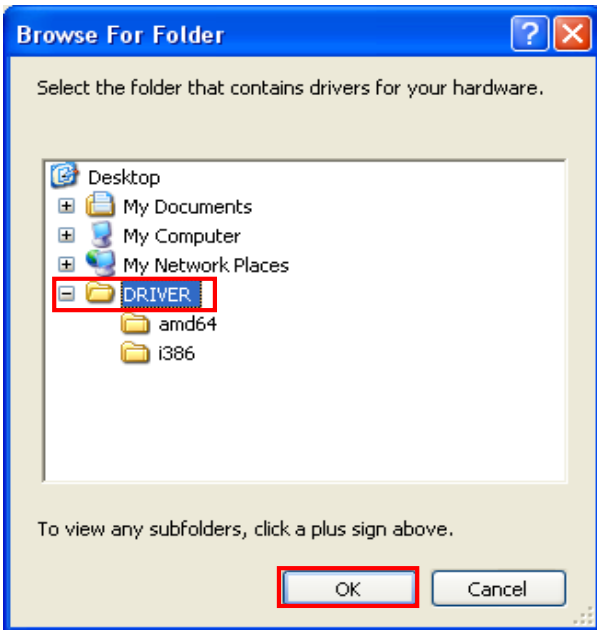
(5) Select "Install from a list or specific location (Advanced)", and click "Next".



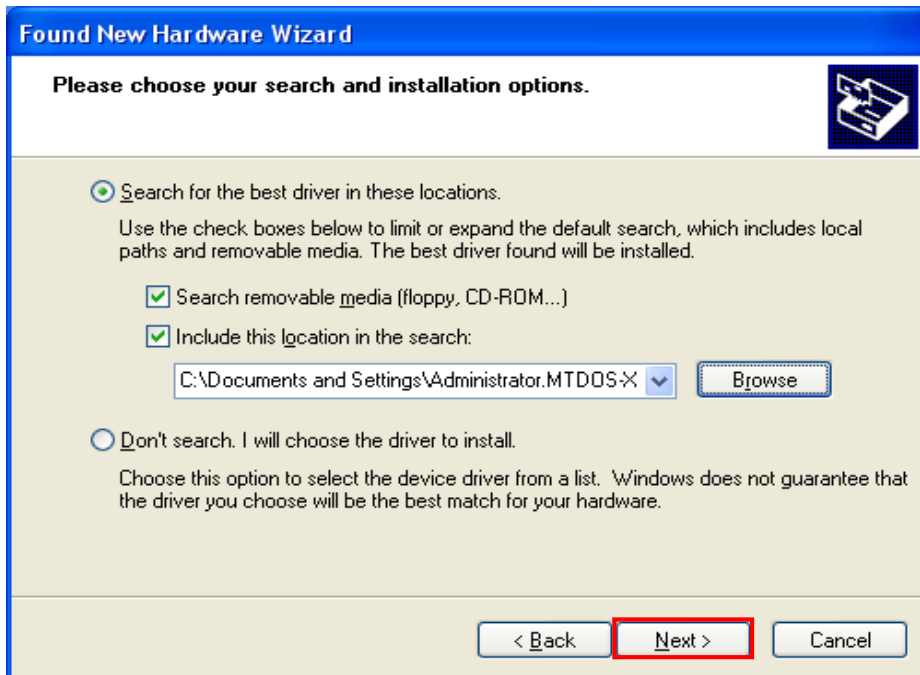
(6) Check the boxes for "Search for the best driver in these locations." and "Search removable media [floppy, CD-ROM...]" and "Include this location in the search:", and then click "Browse".



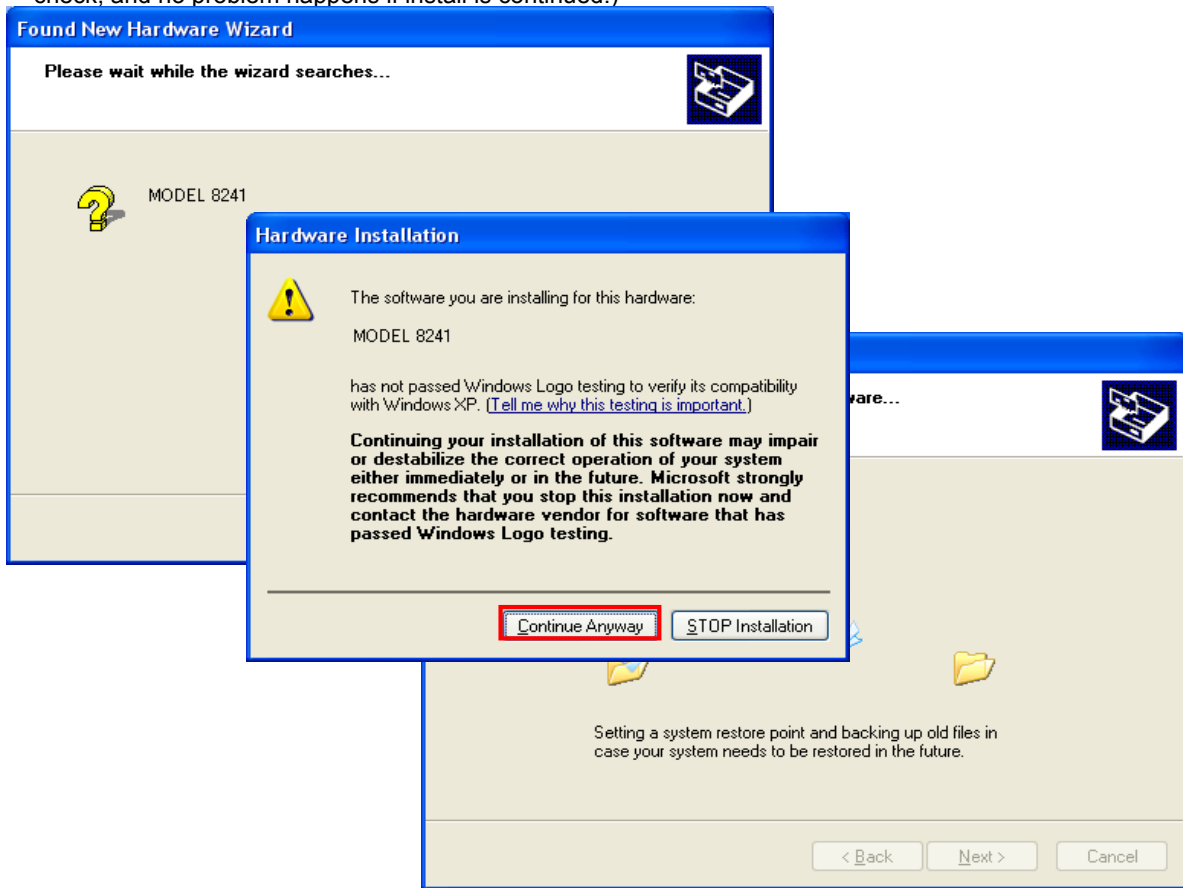
(7) Select a folder to download the file.



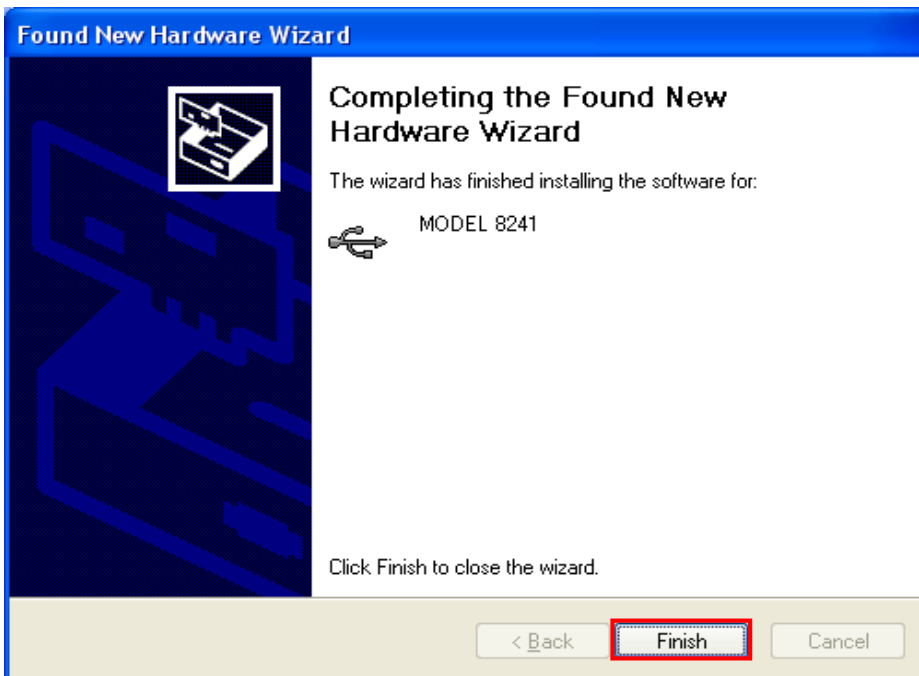
(8) It's confirmed that a chosen folder is indicated, and click "Next".



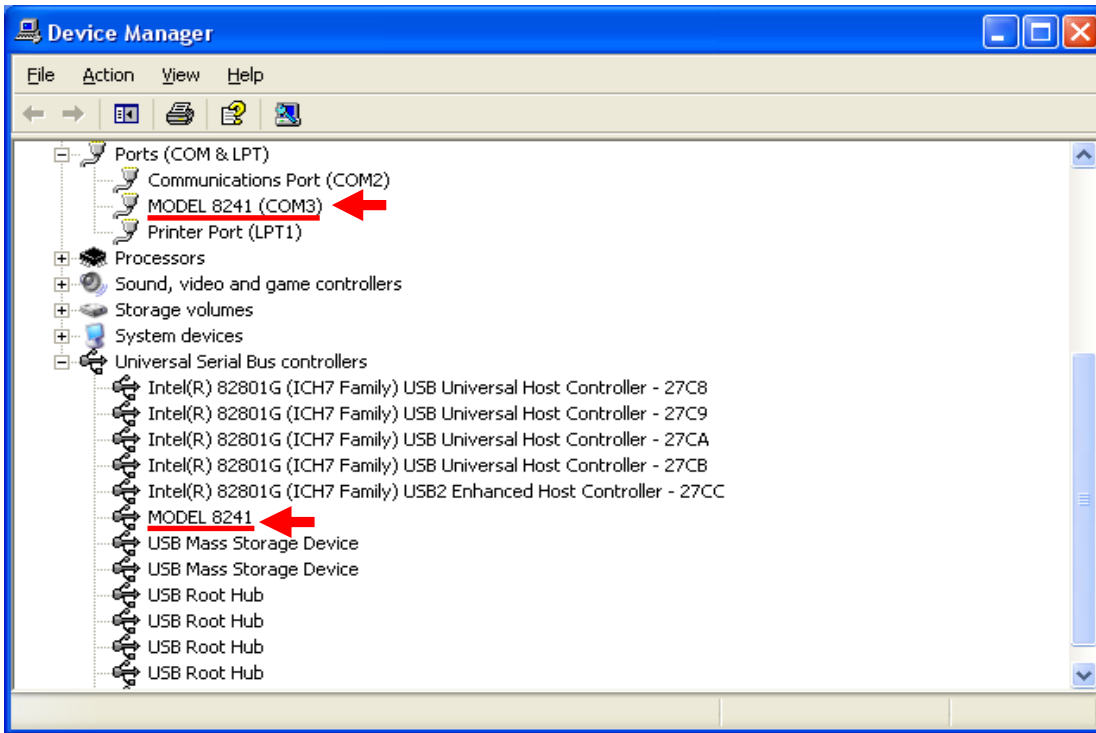
(9) In case that following window appears on Windows XP, click "Continue anyway". (It is an operation check, and no problem happens if install is continued.)



(10) Install is completed when the wizard finishes. Click "Finish".



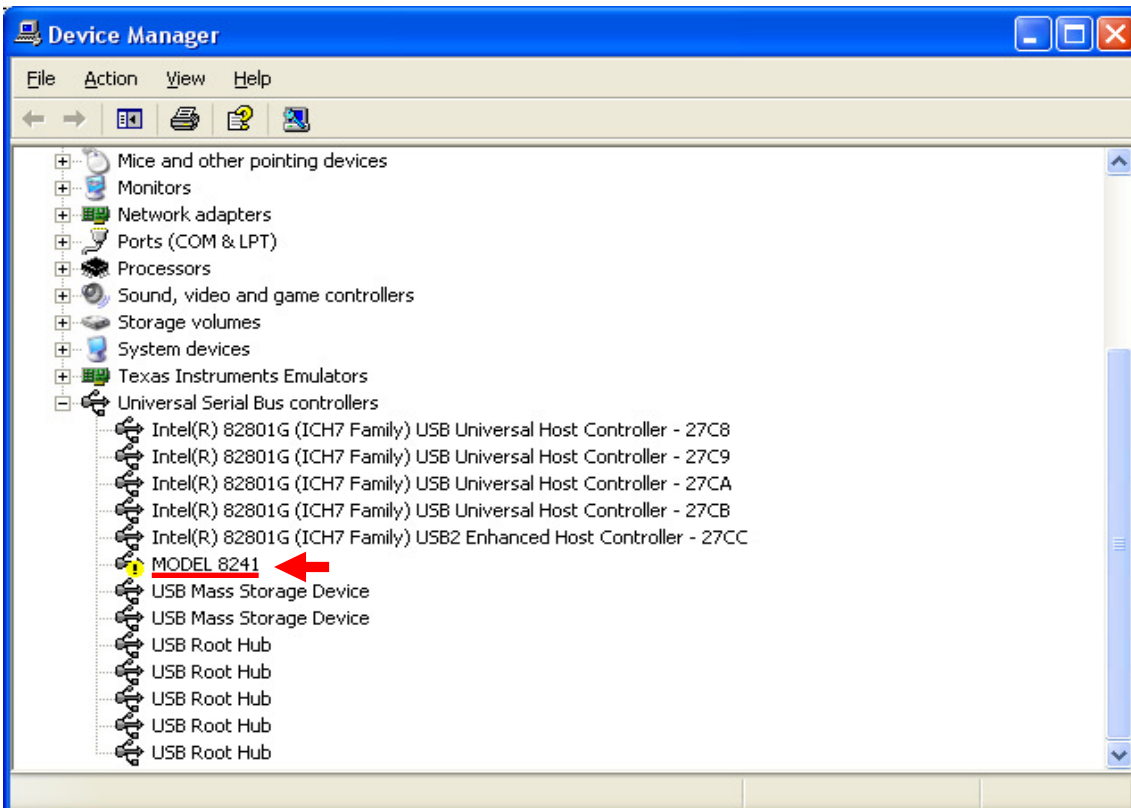
(11) When 2 being installed as shown in the lower figure, a driver was normally installed.



### USB Driver Un-installation

When install of the USB driver is interrupted and reinstall cannot be done, follow the procedure below and delete the existing driver, and then install it again.

- (1) Connect a PC and the instrument with a USB cord.
- (2) Click the "Control Panel" in the Start menu.
- (3) Click "System" in the Control panel.
- (4) Then click "Device Manager".
- (5) **Right click** on "MODEL 8241" in the USB Controller.
- (6) Click "Uninstall" to uninstall the USB driver.



- (7) Remove the USB cord connecting your PC and the instrument once, and connect them again.
- (8) When "Found New Hardware Wizard" window appears, follow the procedures described at "**USB Driver Installation**" and install the driver.