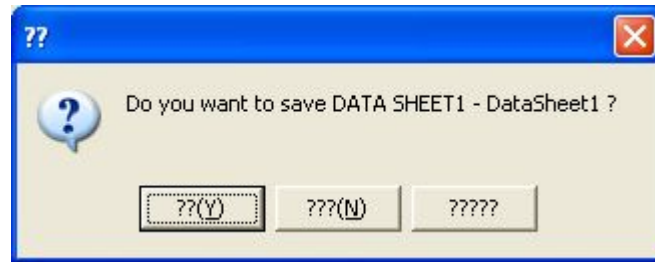


How to fix “???” on messages and buttons to correct display

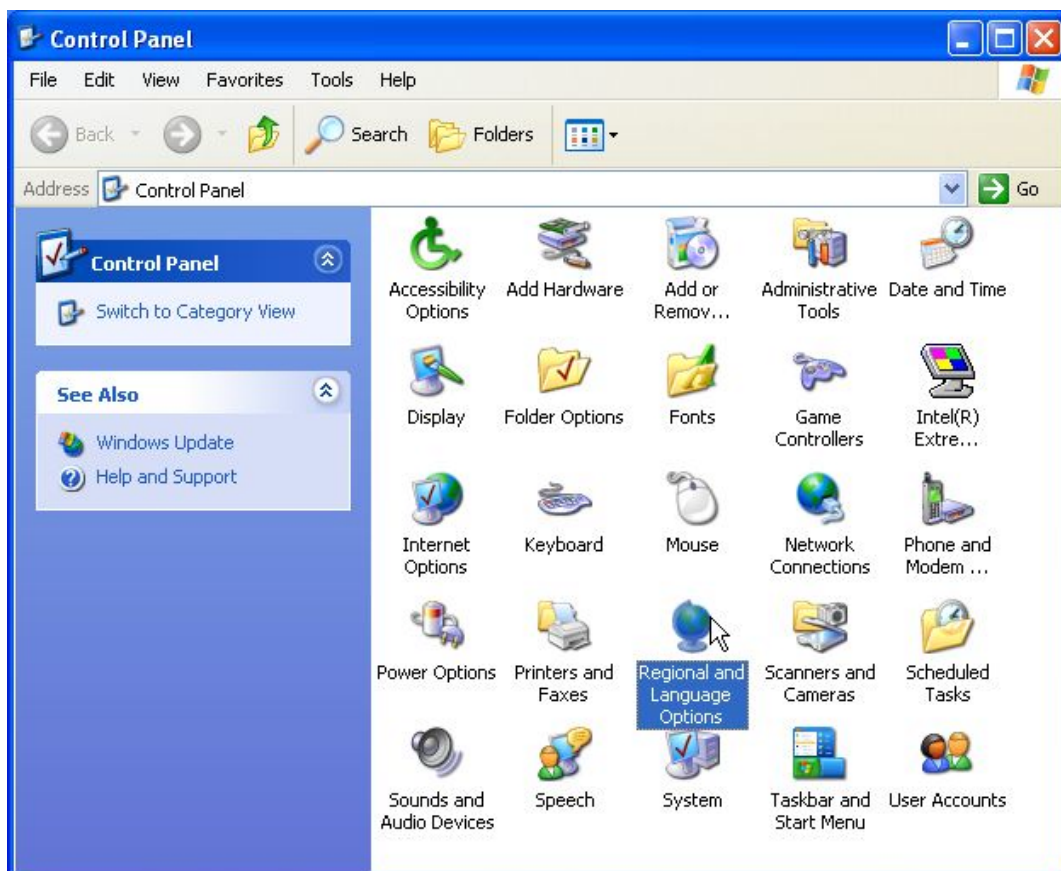


On this software “KEW LOG Soft”, if its contents are not corresponding to your region or language, messages or button displays on Windows Dialog becomes “???”.

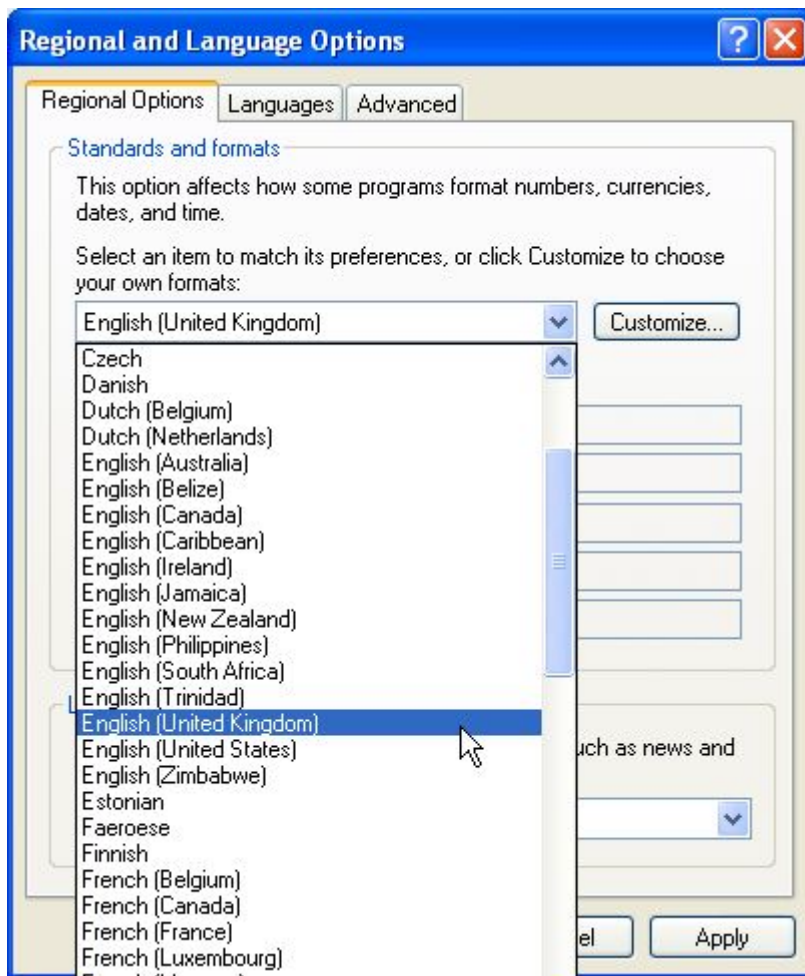
Please follow the procedure below to avoid such a problem.

<For WindowsXP>

1. When KEW LOG Soft is run, please close it.
2. Next, click “Start” at the lower left of the screen, and then click “Control panel”.
3. Then, click Regional and Language Option in Control Panel.



4. Select any one of following countries or regions from the list of “Standards and formats” in “Regional Options”.



- | | |
|-------------------|---------------------------|
| ◆ Italian(Italy) | ◆ French(France) |
| ◆ Dutch(Belgium) | ◆ French(Belgium) |
| ◆ Spanish(Spain) | ◆ Polish |
| ◆ Czech | ◆ Romanian |
| ◆ Danish | ◆ Russian |
| ◆ German(Austria) | ◆ English(United States) |
| ◆ German(Germany) | ◆ English(Australia) |
| ◆ Hungarian | ◆ English(United Kingdom) |

5. After one of them is selected, click “OK”.
6. When above settings are completed and KEW LOG Soft is started, messages won't be “???”.