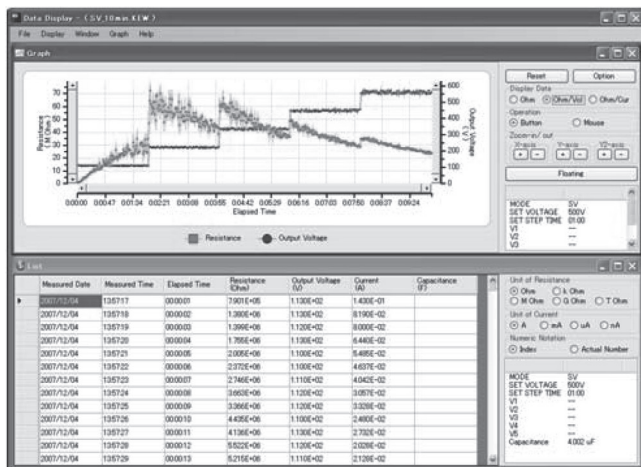


# INSTALL MANUAL



PC Software for KEW3127

# KEW Windows for KEW3127



**KYORITSU ELECTRICAL  
INSTRUMENTS WORKS, LTD.**

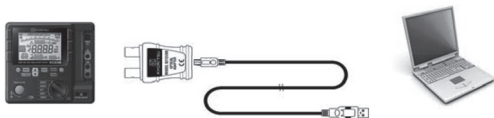
---

## Contents

---

1. Introduction .....	1
2. Installing “KEW Windows for KEW3127” .....	2
3. Installing USB driver .....	5
4. Stating “KEW Windows for KEW3127” .....	7

KEW3127



This manual contains instructions how to install the software “KEW Windows for KEW3127” supplied with KEW3127.

## 1. Introduction

### ● Interface

This instrument is equipped with USB and Bluetooth interfaces.

Communication method : USB Ver.1.1

Bluetooth : Bluetooth Ver.5.0

Compliant profile: GATT

The following can be done by USB/ Bluetooth communication.

- \* Downloading files in the internal memory of the instrument to a PC
- \* Making settings for the instrument via PC
- \* Displaying the measured results on a PC as graphs in real-time, and also saving the measured data at the same time

### ● System Requirements

- OS(Operation System)  
For supported OS, please check the version label of the CD case or visit our website.
- Display  
1024 × 768 dots, 65536 colors or more
- HDD (Hard-disk space required)  
1Gbyte or more (including Framework)
- .NET Framework (4.6.1 or more)

### ● Trademark

- Windows® is a registered trademark of Microsoft in the United States.
- Bluetooth is a registered trademark of Bluetooth SIG.

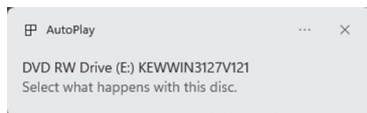
The latest software is available for download from our homepage.  
[www.kew-ltd.co.jp](http://www.kew-ltd.co.jp)

---

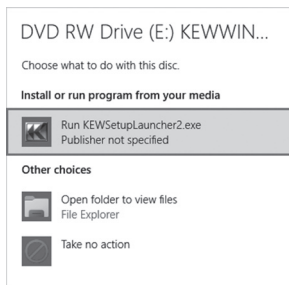
## 2. Installing “KEW Windows for KEW3127”

---

- (1) The following should be checked before installing this application.
- To prepare your system for installation, please close all open programs.
  - Be sure NOT to connect the instrument with the USB until installation completes.
  - Installation shall be done with Administrator right.
  - **To use KEW Windows for KEW3127, .NET Framework 4.6.1 or more is required. If .NET Framework 4.6.1 or more is not installed in your PC, it will be automatically installed when installing this application. An internet connection is required to install .NET Framework 4.6.1 or more.**
- (2) Insert the CD-ROM in your PC's CD-ROM drive. Then following pop-up will appear at the upper right on the screen. Left-click on this box.

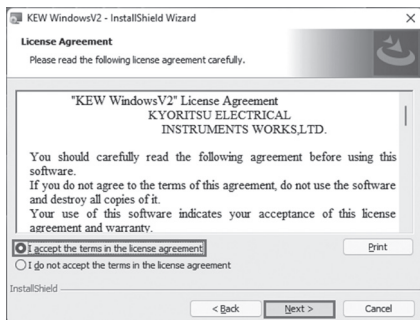


- (3) Click and select “Run KEWSetupLauncher2.exe” when the following box appears. If User Account Control dialog box appears, click **Yes**.

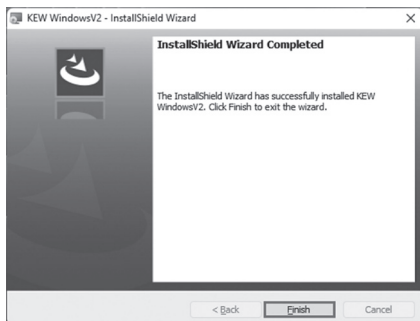


If neither (2) nor (3) appears, run “KEWSetupLauncher2.exe” from the CD.

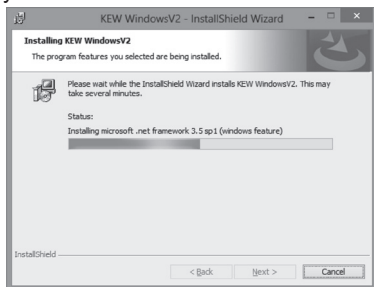
- (4) Read through and understand the License Agreement and click “I accept....”, and then click **Next**.



- (5) Click **Next** after entering the user information and other supplementary information. **Ensure that an internet connection is established, otherwise the installation of this application may be incomplete.**
- (6) Confirm the information on installation, and then click **Install** to start installation.
- (7) Click **Finish** when “InstallShield Wizard Complete” dialog box appears.



The following box will appear if .NET Framework 4.6.1 or more is not installed in your PC.



If a message requiring restarting your PC is displayed, click **Yes** and restart your PC. Run “KEWSetupLauncher2.exe” from the CD after restarting the PC.

(8) When the installation wizard completes, subsequent installation initiates automatically.



(9) Repeat above step (4) through (7) and complete installation.

### **How to un-install the PC Software:**

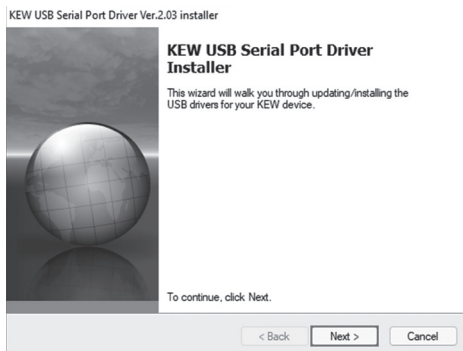
Access to **Control Panel** and double click on **Programs and Features** to remove the “**KEW WindowsV2**” and “**KEW Windows for KEW3127**”.

---

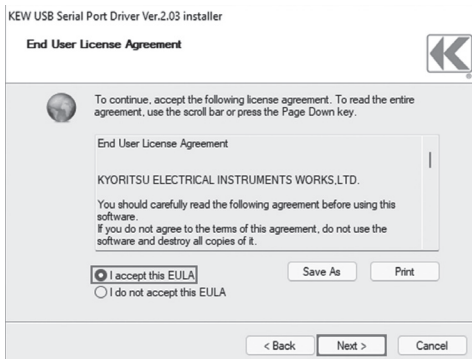
### 3. Installing USB driver

---

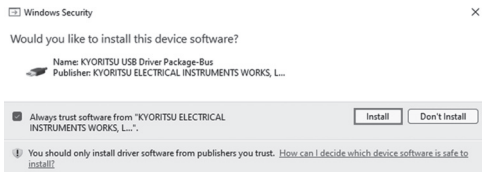
- (1) When KEW Windows for KEW3127 has been successfully installed in your computer, the following dialog box appears to start installing the USB driver. Click “Next”.



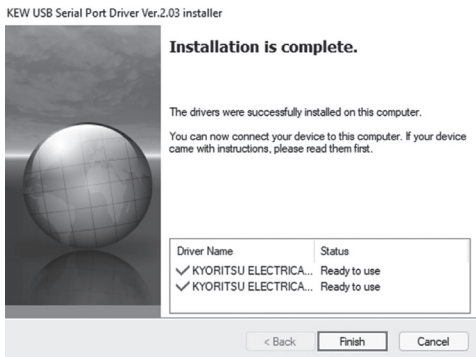
- (2) Read through and understand the End User License Agreement and click “I accept....”, and then click “Next”.



(3) If the following Security Warning message appears, click “Install”



(4) Installation completes when the following window appears. Click “Finish”.



The USB driver has been successfully installed.

To restart the interrupted USB driver installation process, right click on the CD drive and click Open.  
Click and start “kewusbserial200\_setup.exe” in the DRIVER folder.

How to un-install the USB driver:

Open the Control panel, click Programs and Features and select “Windows Driver Package - KYORITSU ELECTRICAL INSTRUMENTS WORKS, LTD. KYORITSU USB Driver Package-Bus”



---

## 4. Starting “KEW Windows for KEW3127”

---

Turn the Bluetooth off to establish communication with application by using MODEL8212 USB. Otherwise, communication with application cannot be made. For details on how to turn on/off Bluetooth, please refer to instruction manual for the product.

Click the “**KEW WindowsV2**” icon on your desktop, or click “**Start**” → “**Program**” → “**KEW**” → “**KEW WindowsV2**”.

Ensure that KEW3127 gets started before connecting KEW3127 to your PC. Then start KEW WindowsV2.

The main window for “KEW WindowsV2” appears. Select “KEW3127” and click **Start** or double click on “KEW3127” to get KEW3127 started.

Click **Close** or close button (x) on the right-top to end the program.



MEMO

MEMO



**KYORITSU ELECTRICAL  
INSTRUMENTS  
WORKS, LTD.**

2-5-20, Nakane, Meguro-ku,

Tokyo, 152-0031 Japan

Phone: +81-3-3723-0131

Fax: +81-3-3723-0152

Factory: Ehime, Japan

**[www.kew-ltd.co.jp](http://www.kew-ltd.co.jp)**